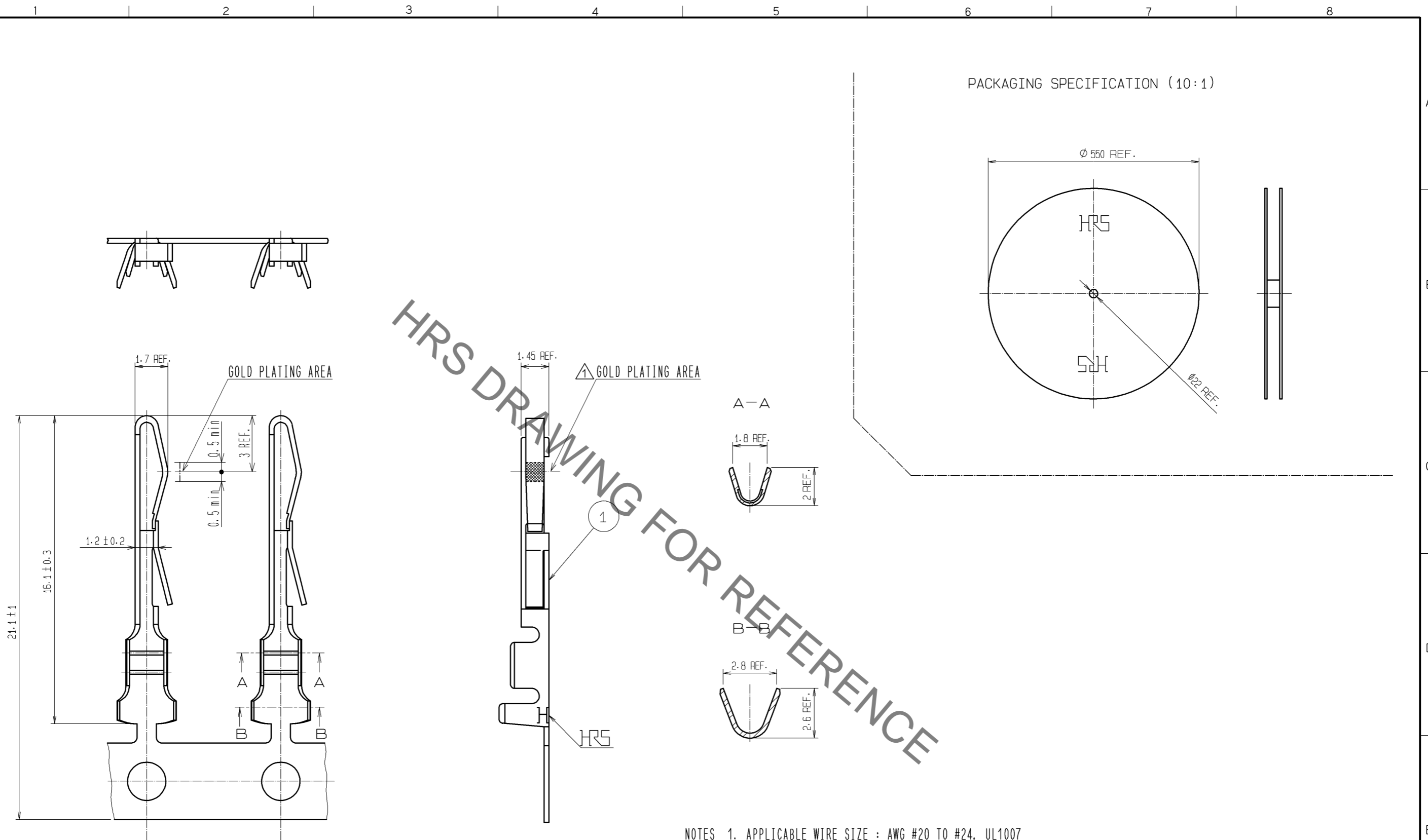


Aug.1.2022 Copyright 2022 HIROSE ELECTRIC CO., LTD. All Rights Reserved.  
 In case of consideration for using Automotive equipment / device which demand high reliability, kindly contact our sales window correspondents.



- NOTES 1. APPLICABLE WIRE SIZE : AWG #20 TO #24, UL1007  
 2. PER REEL : 8,000 CONTACTS  
 3. APPLICATION DEVICES AND APPLICATION REQUIREMENTS, CRIMP HEIGHT etc., SHALL BE SPECIFIED BY THE CABLE USED.

						1	PHOSPHOR BRONZE	CONTACT AREA : GOLD PLATING 0.2μm MIN. UNDER PLATING : NICKEL PLATING 1μm MIN.	
NO.	MATERIAL	FINISH . REMARKS		NO.	MATERIAL	FINISH . REMARKS			
UNITS mm		SCALE 5 : 1	COUNT 1	DESCRIPTION OF REVISIONS DIS-E-003077		DESIGNED YH.MAMADA	CHECKED HO.MIWA	DATE 09.12.15	
<b>HRS</b> HIROSE ELECTRIC CO., LTD.		APPROVED : YH. ENAMI	09.09.30	DRAWING NO. EDC3-027836-02					
		CHECKED : HO. MIWA	09.09.30	PART NO. QR/P8-SC-211(12)					
		DESIGNED : HN. ANDO	09.09.29	CODE NO. CL221-0173-6-12					
		DRAWN : HN. ANDO	09.09.29						