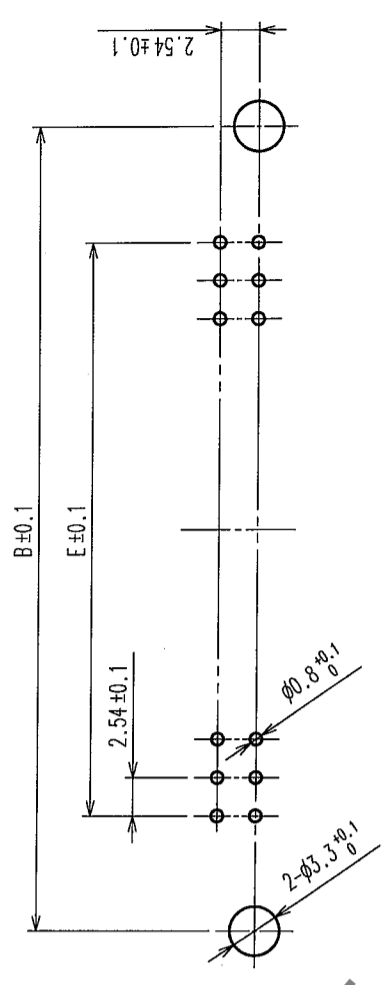
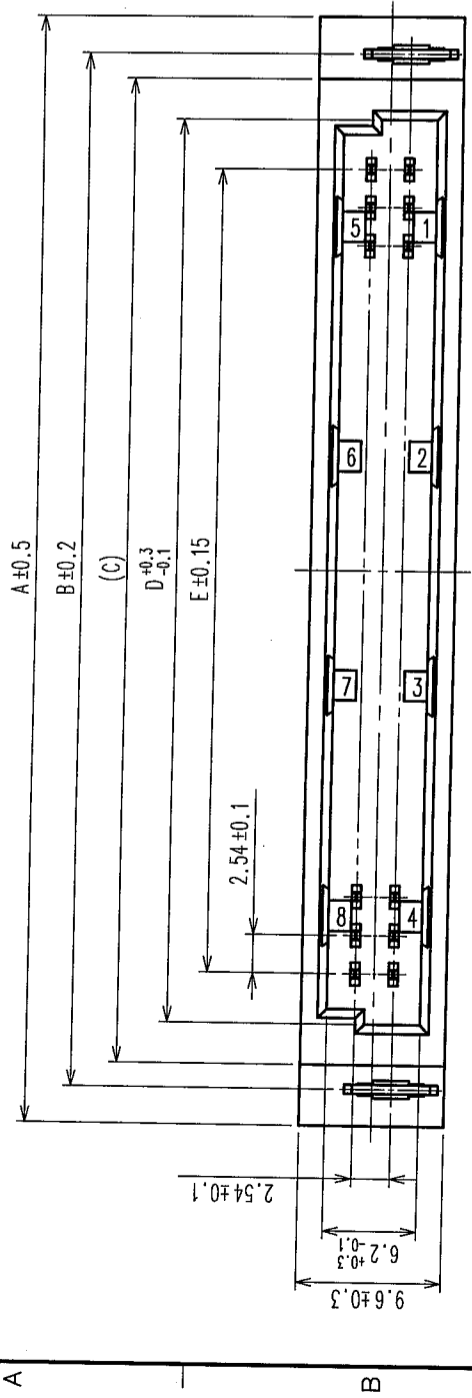
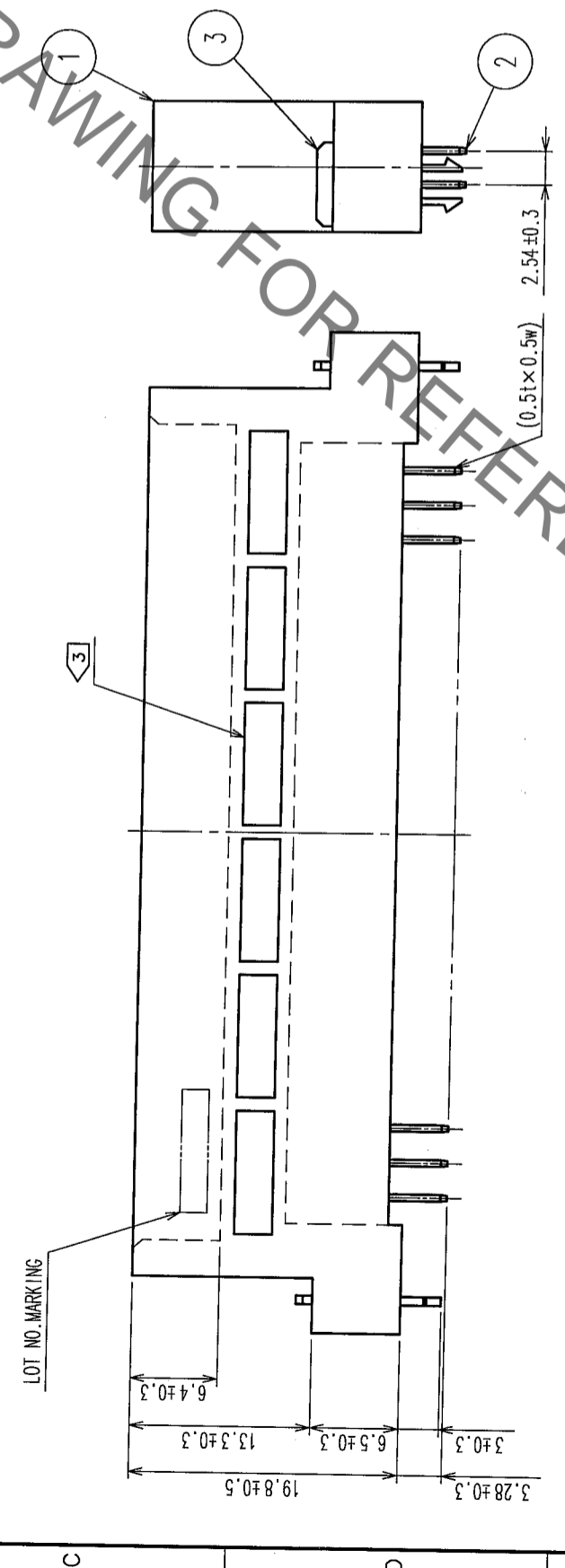


COUNT	DESCRIPTION OF REVISIONS	BY	CHKD	DATE	COUNT	DESCRIPTION OF REVISIONS	BY	CHKD	DATE

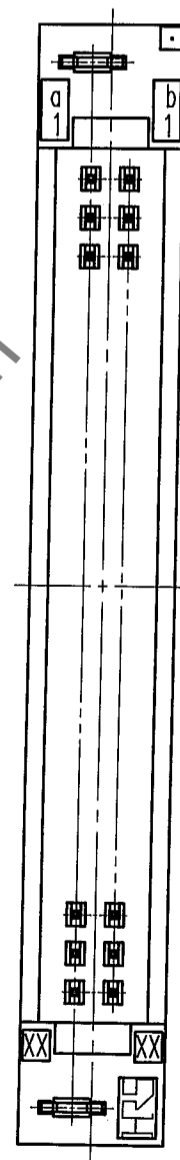


RECOMMENDED P.C.B. HOLE PATTERN (t=1.6±0.1)



HRS No.	PART NO.	NUMBER OF CONTACT	A	B	C	D	E
583-0229-0-72	PCN10HB-16P-2.54DSA(72)	16	37.92	33.02	29.79	24.39	17.78
583-0159-6-72	PCN10HB-20P-2.54DSA(72)	20	43.00	38.10	34.87	29.47	22.86
583-0427-3-72	PCN10HB-24P-2.54DSA(72)	24	48.08	43.18	39.95	34.55	27.94
583-0163-3-72	PCN10HB-32P-2.54DSA(72)	32	58.24	53.34	50.11	44.71	38.10
583-0166-1-72	PCN10HB-44P-2.54DSA(72)	44	73.48	68.58	65.35	59.95	53.34
583-0403-5-72	PCN10HB-50P-2.54DSA(72)	50	81.10	76.20	72.97	67.57	60.96

NOTE 1. AS FOR AUG, 2005.
 2. THE DIMENSION IN PARENTHESIS IS FOR REFERENCE.
 3. PREVENTIVE DESIGN FOR HOUSING SINKAGE DIFFERS DEPENDING ON THE NUMBER OF CONTACT POSITIONS.



TO

CODE NO. (OLD)	CL	DESIGNED	H. SAITOU	CHECKED	M. Yamada	APPROVED	A. Hayama	RELEASED	
SCALE	2 : 1	DRAWN	M. OGAWA	DATE	05.08.29	DATE	05.08.30	DATE	05.08.30
UNITS	MM	PART NO.	PCN10HB-2.54DSA(72)	FINISH, REMARKS	Ni14 mmSn14 m CONTACT AREA: Ni2.5μm+Au0.2μm MOUNTING AREA: Ni2.5μm+Sn2μm GRAY, UL94V-0				
DRAWING NO.	EDC3-154687-01	CODE NO.	CL583						

HRS DRAWING FOR REFERENCE