

**FAST RECOVERY RECTIFIERS**

REVERSE VOLTAGE - **50 to 600** Volts  
FORWARD CURRENT - **1.0** Ampere

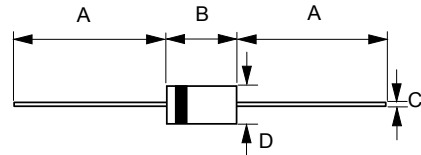
**FEATURES**

- Fast switching for high efficiency
- Low cost
- Diffused junction
- Low reverse leakage current
- Low forward voltage drop
- High current capability
- The plastic material carries UL recognition 94V-0

**MECHANICAL DATA**

- Case : JEDEC A-405 molded plastic
- Polarity : Color band denotes cathode
- Weight : 0.008 ounces, 0.22 grams
- Mounting position : Any

**A-405**



A-405		
Dim.	Min.	Max.
A	25.4	-
B	4.10	5.20
C	0.53 $\phi$	0.64 $\phi$
D	2.00 $\phi$	2.70 $\phi$
All Dimensions in millimeter		

**MAXIMUM RATINGS AND ELECTRICAL CHARACTERISTICS**

Ratings at 25°C ambient temperature unless otherwise specified.

CHARACTERISTICS	SYMBOL	1N4933L	1N4934L	1N4935L	1N4936L	1N4937L	UNIT
Maximum Recurrent Peak Reverse Voltage	V <sub>RRM</sub>	50	100	200	400	600	V
Maximum RMS Voltage	V <sub>RMS</sub>	35	70	140	280	420	V
Maximum DC Blocking Voltage	V <sub>DC</sub>	50	100	200	400	600	V
Maximum Average Forward Rectified Current @T <sub>A</sub> = 75°C	I <sub>(AV)</sub>	1.0					A
Peak Forward Surge Current 8.3ms single half sine-wave super imposed on rated load(JEDEC Method)	I <sub>FSM</sub>	30					A
Maximum forward Voltage at 1.0A DC	V <sub>F</sub>	1.2					V
Maximum DC Reverse Current at Rated DC Blocking Voltage @T <sub>J</sub> = 25°C	I <sub>R</sub>	5.0					uA
@T <sub>J</sub> = 100°C		100					uA
Maximum Reverse Recovery Time (Note 1)	T <sub>RR</sub>	200					ns
Maximum Reverse Recovery Time (Note 2)	T <sub>RR</sub>	130					ns
Typical Junction Capacitance (Note 3)	C <sub>J</sub>	15					pF
Typical Thermal Resistance (Note 4)	R <sub>θJA</sub>	50					°C/W
Operating Temperature Range	T <sub>J</sub>	-55 to +125					°C
Storage Temperature Range	T <sub>STG</sub>	-55 to +150					°C

- NOTES : 1.Measured with I<sub>F</sub>=1.0A,V<sub>R</sub>=30V,di/dt=50A/us.  
2.Measured with I<sub>F</sub>=0.5A,I<sub>R</sub>=1A,I<sub>RR</sub>=0.25A.  
3.Measured at 1.0MHz and applied reverse voltage of 4.0V DC.  
4.Thermal Resistance Junction to Ambient.

REV. 4, Oct-2010, KDBB01

FIG.1 - FORWARD CURRENT DERATING CURVE

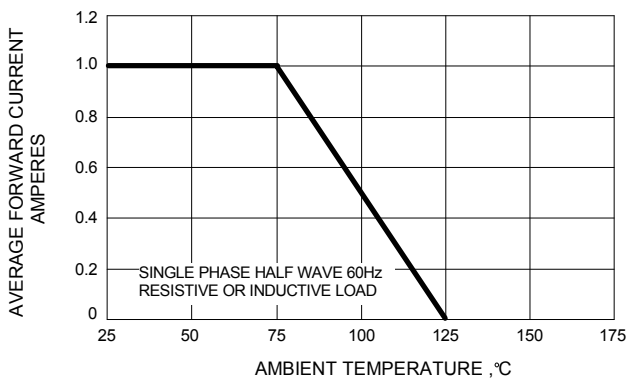


FIG.2 - MAXIMUM NON-REPETITIVE SURGE CURRENT

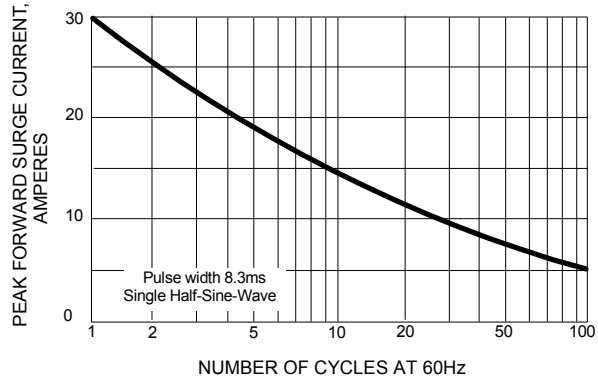


FIG.3 - TYPICAL JUNCTION CAPACITANCE

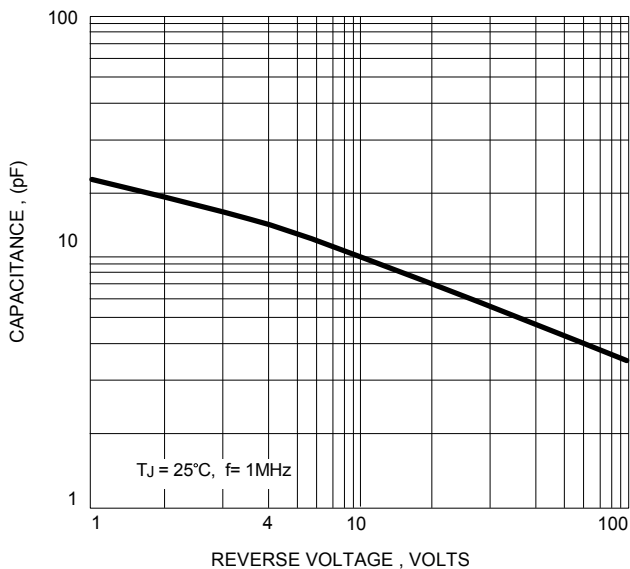
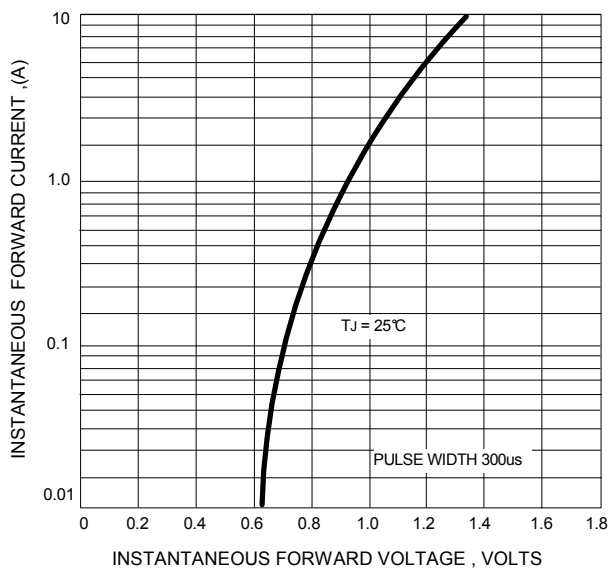


FIG.4 - TYPICAL FORWARD CHARACTERISTICS



## **Important Notice and Disclaimer**

LSC reserves the right to make changes to this document and its products and specifications at any time without notice. Customers should obtain and confirm the latest product information and specifications before final design, purchase or use.

LSC makes no warranty, representation or guarantee regarding the suitability of its products for any particular purpose, nor does LSC assume any liability for application assistance or customer product design. LSC does not warrant or accept any liability with products which are purchased or used for any unintended or unauthorized application.

No license is granted by implication or otherwise under any intellectual property rights of LSC.

LSC products are not authorized for use as critical components in life support devices or systems without express written approval of LSC.