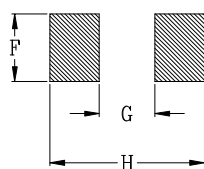
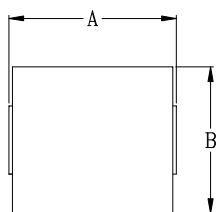
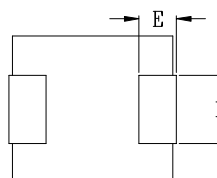
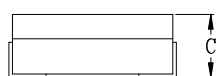


Cyntec P/N : HCB121060 Series

■ Mechanical Dimensions



PCB LAYOUT



Dimensions (Unit : mm)

A	12.1 MAX
B	10.0 MAX
C	6.0 MAX
D	3.95
E	2.5
F	4.5
G	5.9
H	12.5

Electrical Characteristics

Part Number	L0 Inductance (nH) @ (0A)	Li (nH)	DCR (mΩ)	Heat Rating Current DC Amps. Idc (A)	Saturation Current DC Amps. Isat (A)
HCB121060-121	120	96	0.48 ± 7%	36	84
HCB121060-181	180	144			64
HCB121060-211	215	172			53
HCB121060-231	230	184			47
HCB121060-321	320	256			34
HCB121060-361	360	288			30
HCB121060-421	420	336			25
HCB121060-121L	120	96	0.29 ± 7%	45	84
HCB121060-181L	180	140			64
HCB121060-211L	215	172			53
HCB121060-231L	230	184			47
HCB121060-321L	320	256			34
HCB121060-361L	360	288			30
HCB121060-421L	420	336			25

*: Inductance Tolerance ± 20%

Note 1. : All test data is referenced to 25°C ambient.

Note 2. : Test Condition:100KHz, 1.0Vrms

Note 3. : Isat is the DC current which cause the inductance drop to Li.

Note 4. : Idc is the DC current which cause the surface temperature of the part increase approximately 40 °C.

Note 5. : Operating temperature: -40°C to 125°C (Self-temperature rise included).

Note 6. : The rated current as listed is either the saturation current or the heating current depending on which value is lower.

■ Current Characteristic

