



Solid State Devices, Inc.

14701 Firestone Blvd * La Mirada, CA 90638

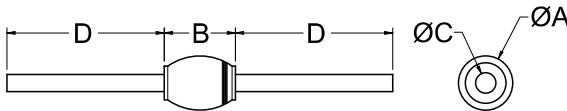
Phone: (562) 404-4474 * Fax: (562) 404-1773

ssdi@ssdi-power.com * www.ssdi-power.com

**SPD5186 Thru SPD5192
and
SPD5186SMS Thru SPD5192SMS**

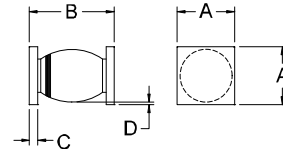
Electrical Characteristics	Symbol	Value	Units
Instantaneous Forward Voltage Drop ($I_F = 3A_{dc}$, $T_A = 25^\circ C$, 300 μs Pulse)	V_F	1.3	V_{DC}
Instantaneous Forward Voltage Drop ($I_F = 3A_{dc}$, $T_A = -55^\circ C$, 300 μs Pulse)	V_F	1.45	V_{DC}
Reverse Leakage Current (Rated V_R , $T_A = 25^\circ C$, 300 μs minimum pulse)	I_R	5	μA
Reverse Leakage Current (Rated V_R , $T_A = 100^\circ C$, 300 μs minimum pulse)	I_R	200	μA
Reverse Recovery Time ($I_F = 500\text{ mA}$, $I_R = 1\text{ Amp}$, $I_{RR} = 250\text{ mA}$, $T_A = 25^\circ C$)	t_{RR}	SPD5186...SMS-SPD5188...SMS SPD5190...SMS-SPD5192...SMS	nsec
		150 200	
Junction Capacitance ($V_R = 10V_{DC}$, $T_A = 25^\circ C$, $f = 1\text{MHz}$)	C_J	40	pF

CASE OUTLINE: Axial



Dimensions		
DIM	MIN	MAX
A	---	.200"
B	---	.230"
C	.047"	.053"
C (B Variant)	.038"	.042"
D	1.00"	---

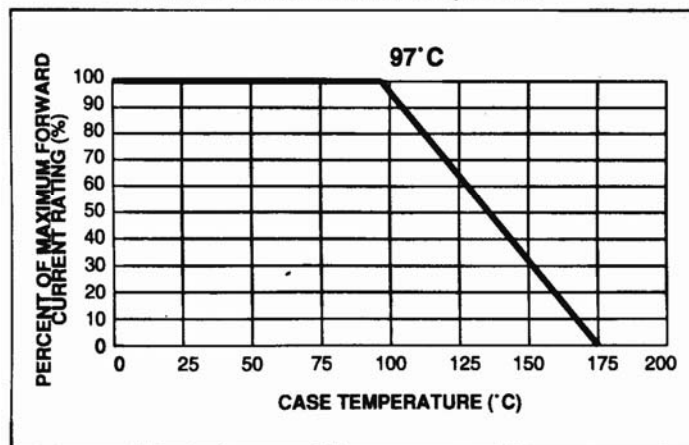
CASE OUTLINE: Surface Mount Square Tab



Dimensions		
DIM	MIN	MAX
A	.172"	.180"
B	.180"	.280"
C	.022"	.028"
D	.002"	---

TYPICAL OPERATING CURVES

$T_A = 25^\circ C$ Unless otherwise specified



NOTE: All specifications are subject to change without notification. SCD's for these devices should be reviewed by SSDI prior to release.

DATA SHEET #: RF0009D

DOC