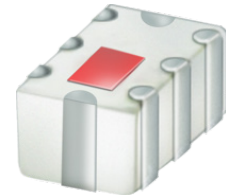


Ceramic Low Pass Filter

LFCG-1400+

50Ω DC to 1400 MHz



CASE STYLE: GE0805C-2

The Big Deal

- Very good rejection, 50 dB typical
- Rugged, ceramic construction
- Tiny size, 0.079 x 0.049 x 0.037” (0805)
- Excellent power handling, 6W

Product Overview

Mini-Circuits' LFCG-1400+ is an LTCC low pass filter with a passband from DC to 1400 MHz, supporting a variety of applications. This model provides 1.0 dB typical passband insertion loss and provides a very good stopband rejection due to strategically constructed layout with minimal interaction between components. It handles up to 6W RF input power and provides a wide operating temperature range from -40 to +85°C. Housed in a tiny 0805 ceramic form factor with wraparound terminations, the filter is ideal for dense PCB layouts and with minimal performance variation due to parasitics.

Key Features

Feature	Advantages
Ultra-wide stopband	The LTCC lowpass filter provides a very good stopband rejection until 10 GHz suitable for high end applications.
LTCC Construction	Provides repeatable performance in a rugged, ceramic package well suited for tough environments such as high humidity and temperature extremes.
Tiny size (0.079 x 0.049 x 0.037”)	Saves space in dense circuit board layouts and minimizes the effects of parasitics.
High power handling, 6W	Supports a wide range of system power requirements.
Wrap-around terminations	Provides excellent solderability and easy visual inspection

Notes

- A. Performance and quality attributes and conditions not expressly stated in this specification document are intended to be excluded and do not form a part of this specification document.
B. Electrical specifications and performance data contained in this specification document are based on Mini-Circuit's applicable established test performance criteria and measurement instructions.
C. The parts covered by this specification document are subject to Mini-Circuits standard limited warranty and terms and conditions (collectively, "Standard Terms"); Purchasers of this part are entitled to the rights and benefits contained therein. For a full statement of the Standard Terms and the exclusive rights and remedies thereunder, please visit Mini-Circuits' website at www.minicircuits.com/MCLStore/terms.jsp



Low Pass Filter

LFCG-1400+

50Ω DC to 1400 MHz



CASE STYLE: GE0805C-2

+RoHS Compliant

The +Suffix identifies RoHS Compliance. See our web site for RoHS Compliance methodologies and qualifications

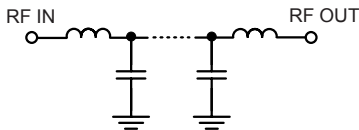
Features

- Low loss, 1 dB typical
- High rejection 50 dB typical
- Excellent power handling, 6W
- Extremely small size 0805 (2.0 x 1.25 mm)
- Temperature stable
- LTCC construction

Applications

- Harmonic Rejection
- VHF/UHF transmitters / receivers
- Military radar applications
- Test and measurement
- Telecommunications & broadband wireless applications

Functional Schematic



Electrical Specifications^{1,2} at 25°C

Parameter	F#	Frequency (MHz)	Min.	Typ.	Max.	Unit	
Pass Band	Insertion Loss	DC-F1	DC-1400	—	1.0	1.9	dB
	Freq. Cut-Off	F2	1650	—	3.0	—	dB
	VSWR	DC-F1	DC-1400	—	1.1	—	:1
Stop Band	Rejection Loss	F3-F4	2015-2300	20	45	—	dB
		F4-F5	2300-6600	40	50	—	dB
	VSWR	F5-F6	6600-10000	—	35	—	dB
		F3-F6	2015-10000	—	20	—	:1

1 In Application where DC voltage is present at either input or output port, coupling capacitors are required.

2 Measured on Mini-Circuits Characterization Test Board TB-799+

Maximum Ratings

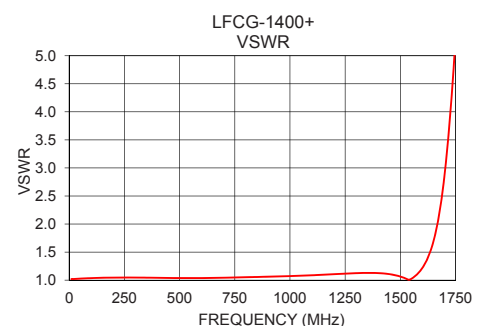
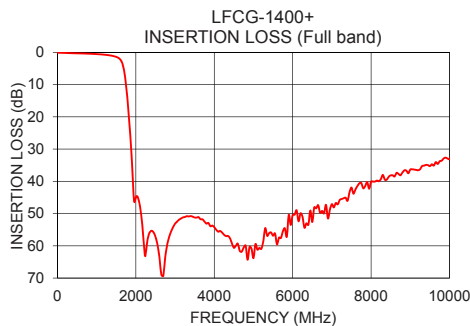
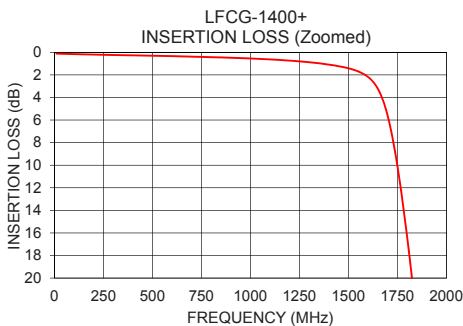
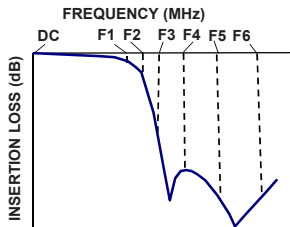
Operating Temperature	-40°C to 85°C
Storage Temperature	-55°C to 100°C
RF Power Input*	6 W max. @25°C

*Passband rating, derate linearly to 3 W at 85°C ambient
Permanent damage may occur if any of these limits are exceeded.

Typical Performance Data at 25°C

Frequency (MHz)	Insertion Loss (dB)	VSWR (:1)
10	0.11	1.02
100	0.16	1.04
1000	0.55	1.07
1400	1.09	1.13
1645	3.10	1.62
1650	3.25	1.69
1800	16.53	0.00
1830	21.02	0.00
1885	30.83	0.00
2015	44.63	20.21
2200	58.84	27.57
2300	58.05	31.20
3700	51.78	70.50
4000	54.22	81.10
5800	54.57	89.25
6000	50.46	78.98
6600	48.37	64.60
8500	38.16	58.54
9300	35.27	38.44
10000	33.10	31.91

Typical Frequency Response



Notes

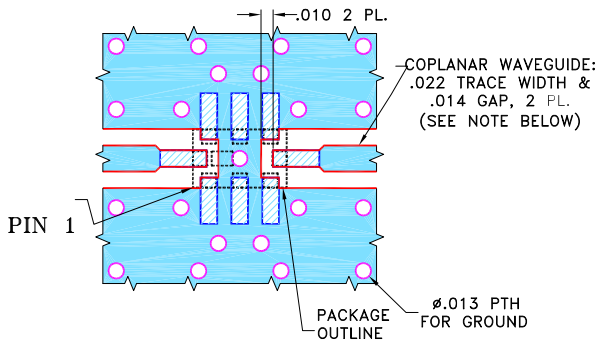
- A. Performance and quality attributes and conditions not expressly stated in this specification document are intended to be excluded and do not form a part of this specification document.
- B. Electrical specifications and performance data contained in this specification document are based on Mini-Circuit's applicable established test performance criteria and measurement instructions.
- C. The parts covered by this specification document are subject to Mini-Circuits standard limited warranty and terms and conditions (collectively, "Standard Terms"); Purchasers of this part are entitled to the rights and benefits contained therein. For a full statement of the Standard Terms and the exclusive rights and remedies thereunder, please visit Mini-Circuits' website at www.minicircuits.com/MCLStore/terms.jsp



Pad Connections

INPUT	8
OUTPUT	4
GROUND	1,2,3,5,6,7

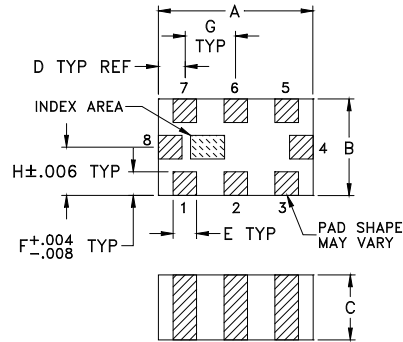
Demo Board MCL P/N: TB-799+
Suggested PCB Layout (PL-429)



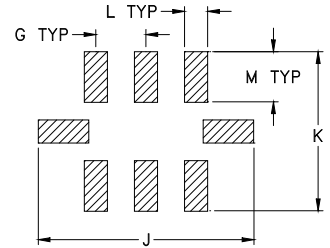
NOTES:

1. COPLANAR WAVEGUIDE IS SHOWN FOR ROGERS RO4350B WITH DIELECTRIC THICKNESS $.010" \pm .001"$. COPPER: 1/2 OZ. EACH SIDE. FOR OTHER MATERIALS TRACE WIDTH AND GAP MAY NEED TO BE MODIFIED.
 2. BOTTOM SIDE OF THE PCB IS CONTINUOUS GROUND PLANE.
- DENOTES PCB COPPER LAYOUT WITH SMOBC (SOLDER MASK OVER BARE COPPER).
 DENOTES COPPER LAND PATTERN FREE OF SOLDER MASK.

Outline Drawing



PCB Land Pattern



Suggested Layout,
 Tolerance to be within $\pm .002$

Outline Dimensions (inch/mm)

A	B	C	D	E	F	G
.079	.049	.037	.014	.012	.012	.026
2.00	1.25	0.95	0.35	0.30	0.30	0.65
H	J	K	L	M	Wt.	
.025	.134	.110	.014	.039	grams	
0.63	3.40	2.80	0.35	1.00	.008	

Notes

- A. Performance and quality attributes and conditions not expressly stated in this specification document are intended to be excluded and do not form a part of this specification document.
 B. Electrical specifications and performance data contained in this specification document are based on Mini-Circuit's applicable established test performance criteria and measurement instructions.
 C. The parts covered by this specification document are subject to Mini-Circuits standard limited warranty and terms and conditions (collectively, "Standard Terms"); Purchasers of this part are entitled to the rights and benefits contained therein. For a full statement of the Standard Terms and the exclusive rights and remedies thereunder, please visit Mini-Circuits' website at www.minicircuits.com/MCLStore/terms.jsp