



Solid State Devices, Inc.

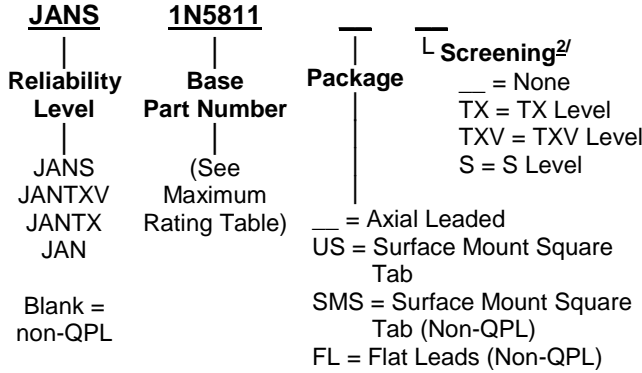
14701 Firestone Blvd * La Mirada, CA 90638
 Phone: (562) 404-4474 * Fax: (562) 404-1773
 ssdi@ssdi-power.com * www.ssdi-power.com

1N5807 – 1N5811 Series

**Qualified Levels: JANS, JANTXV, JANTX, JAN
i.a.w MIL-PRF-19500/477**

Designer's Data Sheet

Part Number / Ordering Information ^{1/}



6 AMP HYPERFAST RECOVERY RECTIFIER 50 – 150 Volts, 30 nsec max

- FEATURES:**
- Hyperfast Recovery: 30 nsec Maximum
 - Hermetically Sealed Axial Leaded and Surface Mount Packages
 - Solid Silver Leads (Axial Leaded / Flat Leads) Provide Stress Relief and Facilitate Welding
 - Void-Free Ceramic Frit Glass Construction
 - High Temperature Category I Eutectic Metallurgical Bond
 - Excellent Thermal Shock Performance
 - 175°C Maximum Operating Temperature
 - Non-QPL TX, TXV, and Space Level Screening Available^{2/}
 - For Copper Leads Versions, See SPD5807 – SPD5811 Series

MAXIMUM RATINGS^{3/}

| Part Number | V _{RWM} | I _{FSM} | I _o | | t _{RR} | R _{θJL} | R _{θJEC} | R _{θJX} |
|-------------------|------------------|-------------------------|---|---|-----------------|------------------|-------------------|------------------|
| Conditions | | t _p = 8.3 ms | T _L = +75°C ^{4/ 5/} | T _A = +55°C ^{6/ 7/} | 25°C | ^{4/} | ^{4/ 8/} | ^{6/} |
| Units | V _{DC} | A (pk) | A _{DC} | A _{DC} | ns | °C/W | °C/W | °C/W |
| 1N5807 | 50 | 125 | 6.0 | 3.0 | 30 | 22 | 6.5 | 52 |
| 1N5809 | 100 | 125 | 6.0 | 3.0 | 30 | 22 | 6.5 | 52 |
| 1N5811 | 150 | 125 | 6.0 | 3.0 | 30 | 22 | 6.5 | 52 |

MAXIMUM RATINGS^{3/}

| Storage Temperature / Operating Temperature | Symbol | Value | Unit |
|---|-----------------------------------|-------------|------|
| | T _{STG} , T _J | -65 to +175 | °C |

Notes:

- 1/ For ordering information, price, and availability – Contact factory.
- 2/ Non-QPL TX, TXV, and S level screening based on MIL-PRF-19500; Screening flows available on request.
- 3/ Unless otherwise specified, T_A = 25°C.
- 4/ T_L at L = .375 in., T_{EC} = T_L at L = 0 or T_{end tab} for US, SMS suffix devices.
- 5/ Derate at 60 mA/°C for T_L above +75°C for 6.0 amp ratings.
- 6/ For the 3 amp ratings at 55°C, these I_o ratings are for a thermally (PC boards or other) mounting methods where the lead or end-cap temperatures cannot be maintained as shown in IO columns above and where the thermal resistance from mounting point to ambient is still sufficiently controlled where T_{J(max)} above is not exceeded. This equates to R_{θJX} ≤ 52°C/W.
- 7/ Derate at 25 mA/°C for T_A above +55°C for 3.0 amp ratings.
- 8/ Surface mount square tab (US) devices only.

Axial Leaded (—)

Surface Mount Square Tab (US / SMS)

Flat Leads (FL)



**Dime used for size reference*

NOTE: All specifications are subject to change without notification. SCD's for these devices should be reviewed by SSDI prior to release.

DATA SHEET #: RC0213A

DOC



Solid State Devices, Inc.

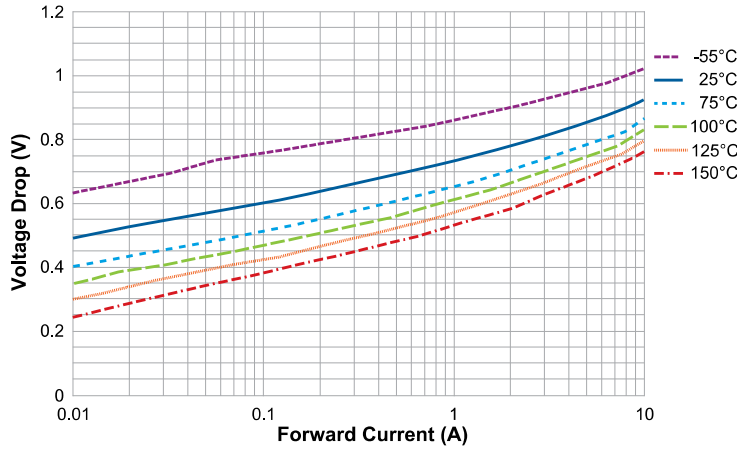
14701 Firestone Blvd * La Mirada, CA 90638
 Phone: (562) 404-4474 * Fax: (562) 404-1773
 ssdi@ssdi-power.com * www.ssdi-power.com

1N5807 – 1N5811 Series

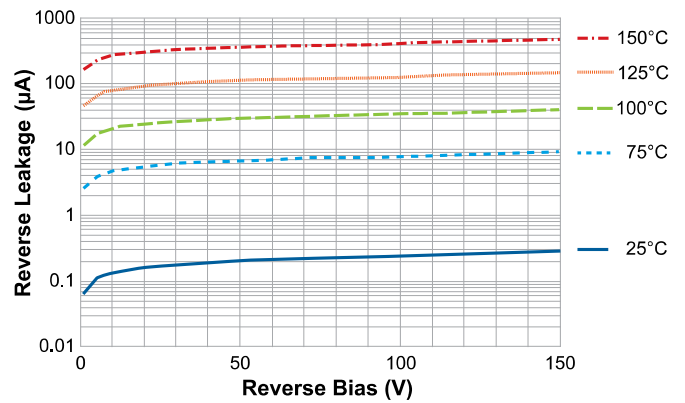
ELECTRICAL CHARACTERISTICS

| Part Number | V _{BR} | I _{R1} | I _{R2} | V _{F1} | V _{F2} | V _{F3} |
|-------------|-------------------------------------|---|--|---|---|---|
| Conditions | @ 100 μ A pulse \leq 20 ms | V _R = V _{RWM} T _A = +25°C pulsed V _R \leq 20 ms | V _R = V _{RWM} T _A = +125°C pulsed V _R \leq 20 ms | I _{FM} = 3.0 A Duty cycle \leq 2% pulsed, t _p = 8.3 ms max | I _{FM} = 4.0 A Duty cycle \leq 2% pulsed, t _p = 8.3 ms max | I _{FM} = 6.0 A Duty cycle \leq 2% pulsed, t _p = 8.3 ms max |
| Units | V | μ A | μ A | V | V | V |
| 1N5807 | 60 | 5.0 | 525 | 0.865 | 0.875 | 0.925 |
| 1N5809 | 110 | 5.0 | 525 | 0.865 | 0.875 | 0.925 |
| 1N5811 | 160 | 5.0 | 525 | 0.865 | 0.875 | 0.925 |

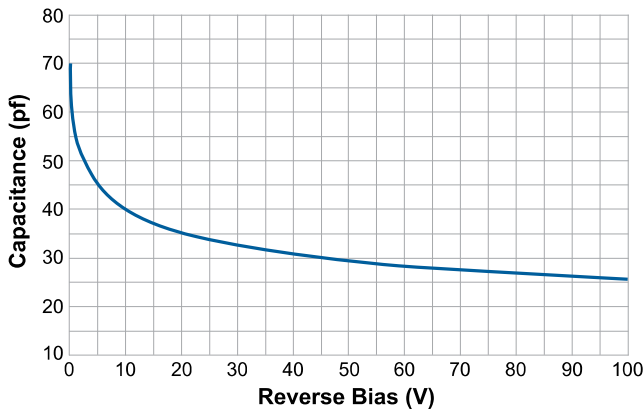
SSDI 1N5811
Typical V_F vs Temperature



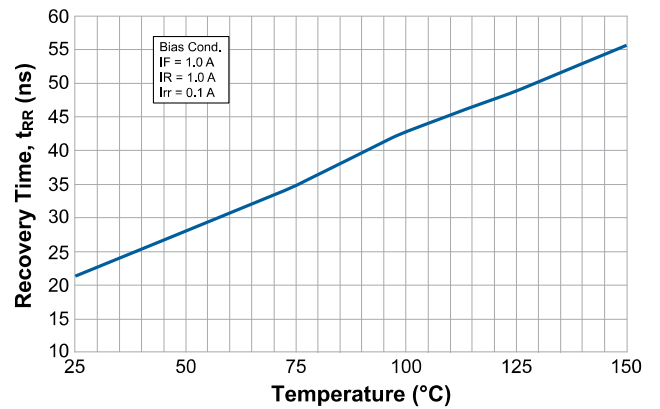
SSDI 1N5811
Typical I_R vs Temperature



SSDI 1N5811
Typical Capacitance vs Voltage



SSDI 1N5811
Typical Recovery Time vs Temperature



NOTE: All specifications are subject to change without notification.
 SCD's for these devices should be reviewed by SSDI prior to release.

DATA SHEET #: RC0213A

DOC

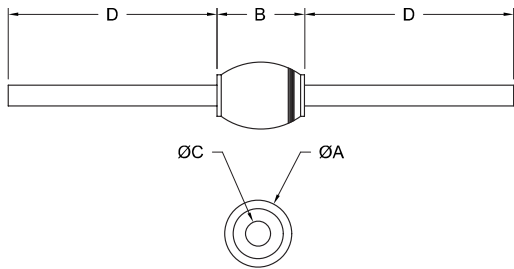


Solid State Devices, Inc.

14701 Firestone Blvd * La Mirada, CA 90638
 Phone: (562) 404-4474 * Fax: (562) 404-1773
 ssdi@ssdi-power.com * www.ssdi-power.com

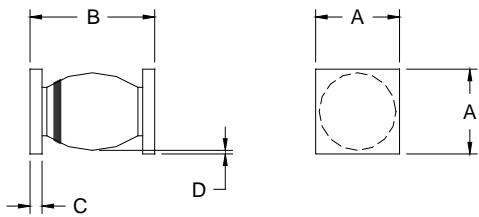
1N5807 – 1N5811 Series

PACKAGE OUTLINE: Axial Leaded ()



| DIMENSIONS | | | | | | | |
|------------|------|--------------------|--------------------|------|------|------|-------|
| A | | B* | | C | | D | |
| MIN | MAX | MIN | MAX | MIN | MAX | MIN | MAX |
| .115 | .142 | .130 (.140 typ) | .300 (.166 typ) | .036 | .042 | .900 | 1.300 |

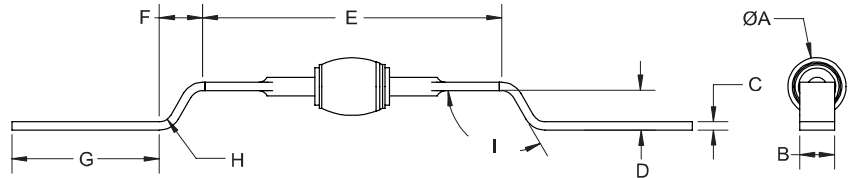
**PACKAGE OUTLINE:
Surface Mount Square Tab (US / SMS)**



| DIMENSIONS | | | | | | | |
|------------|------|------|------|------|------|------|-----|
| A | | B | | C | | D | |
| MIN | MAX | MIN | MAX | MIN | MAX | MIN | MAX |
| .137 | .148 | .200 | .225 | .019 | .028 | .003 | -- |

**PACKAGE OUTLINE:
Flat Leads (FL) *Non-QPL registered**

- Solid silver leads
- Provide stress relief (customizable to customer specifications)
- Ideal for welding to BUS bar
- Typical application: solar array bypass / blocking diodes for photovoltaic (PV) panels



| DIMENSIONS | | | | | | | | | | | | | | | |
|------------|------|------|------|------|------|------|------|------|------|------|------|------|------|------|--|
| A | | B | | C | | D | | E | | F | G | | H | I | |
| MIN | MAX | MIN | MAX | MIN | MAX | MIN | MAX | MIN | MAX | REF | MIN | MAX | REF | REF | |
| .115 | .142 | .065 | .085 | .015 | .021 | .084 | .104 | .620 | .660 | .090 | .295 | .335 | R.03 | 120° | |

NOTE: All specifications are subject to change without notification. SCD's for these devices should be reviewed by SSDI prior to release.

DATA SHEET #: RC0213A

DOC