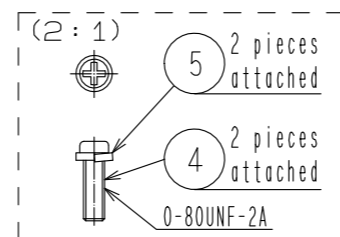
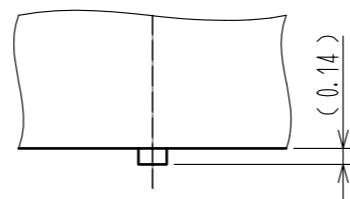


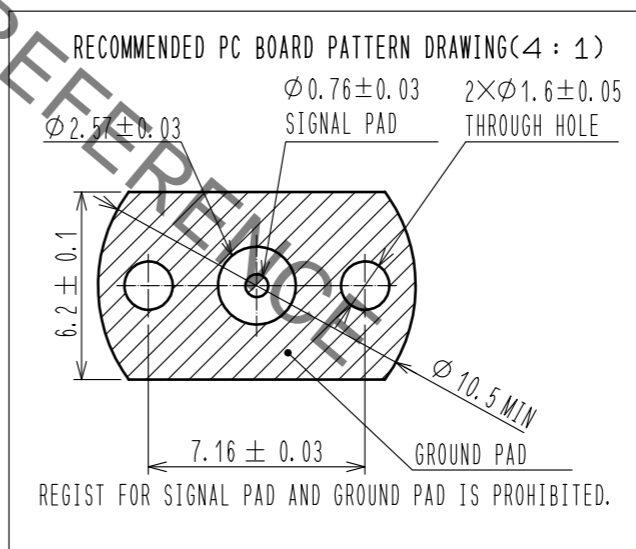
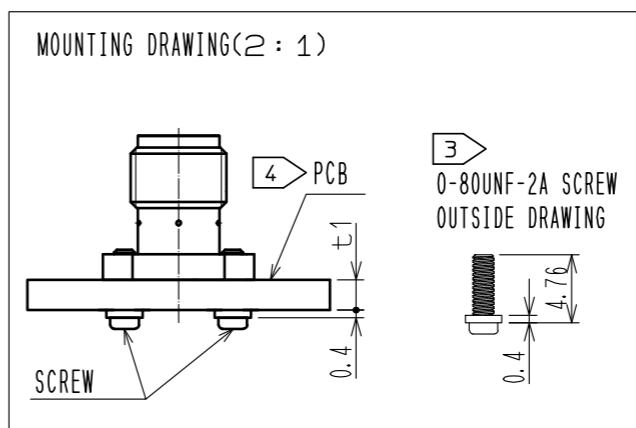
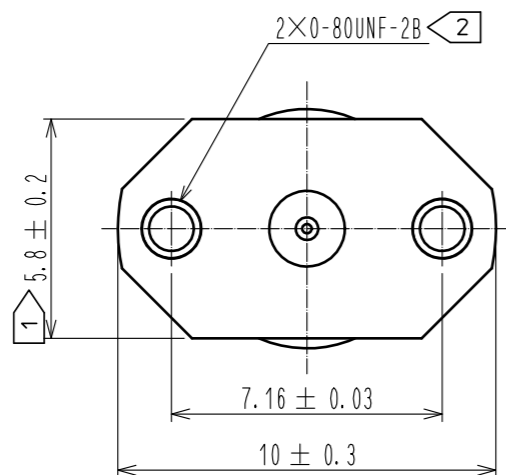
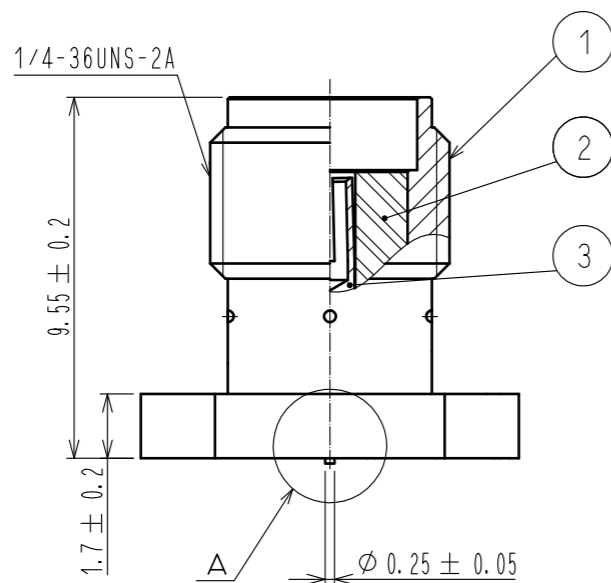
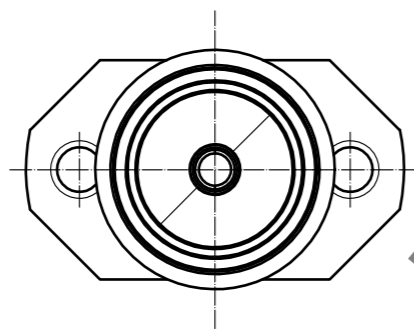
Unified screw thread type

Attached screw thread

A(10:1)



- NOTES
- ① When the mating connector, please hold milling area of  $5.8 \pm 0.2$  with a wrench.
  - ⚠ ② 0-80UNF-2B Screw tightening torque is  $0.09N \cdot m$ .  
Please tighten the screws evenly when mounting the connectors to ensure stable electrical contact.
  - ③ Please use attached screw and washer for PCB mounting.  
Attached screw and washer apply PCB thickness  $t1=0.7$  to  $2.65mm$ .
  - ④ Recommended PCB thickness  $t1$  is greater than  $0.7mm$ .
  - 5. This connector should be use for test port only.



RoHS COMPLIANT

3	BERYLLIUM COPPER	GOLD PLATING	5	STAINLESS STEEL	Spring washer
2	PTFE		4	STEEL	0-80UNF-2A Screw
1	BRASS	GOLD PLATING			
NO.	MATERIAL	FINISH . REMARKS	NO.	MATERIAL	FINISH . REMARKS
UNITS	mm	SCALE	5 : 1	COUNT	1
DESCRIPTION OF REVISIONS			DESIGNED	CHECKED	DATE
DIS-D-00003461			RO. YOKOYAMA	TO. KATAYAMA	18. 08. 31
APPROVED : TO. KATAYAMA 17. 04. 10			DRAWING NO. EDC-339103-01-00		
CHECKED : TO. KATAYAMA 17. 04. 10			PART NO. HRM(G)-300-468B-1(01)		
DESIGNED : RO. YOKOYAMA 17. 04. 10			CODE NO. CL323-0924-8-01		
DRAWN : RO. YOKOYAMA 17. 04. 10			1/1		

In case of consideration for using Automotive equipment / device which demand high reliability, kindly contact our sales window correspondents.