

## GROA\_M

PRV : 50 - 1000 Volts

Io : 1.5 Amperes

### Features

- High current capability
- High surge current capability
- High reliability
- Low reverse current
- Low forward voltage drop
- Fast switching for high efficiency
- RoHS compliant package

### Mechanical Data

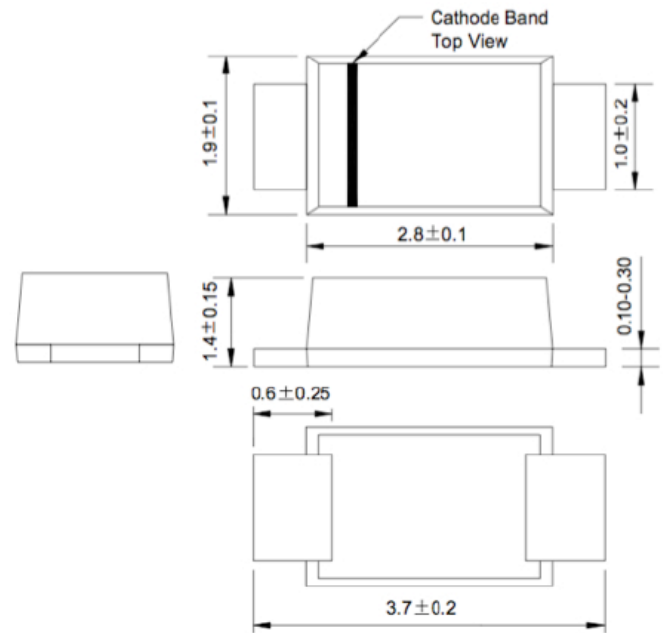
- Epoxy : UL94V-O rate flame retardant
- Lead : Lead Formed for Surface Mount
- Polarity : Color band denotes cathode end
- Mounting position : Any
- Weight : 0.063 gram

Package type : SOD-123FL

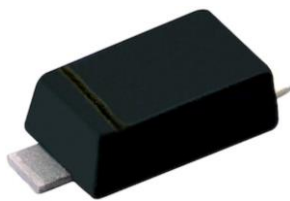
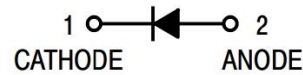
### Packing & Order Information

3,000/Reel

### SOD-123FL



### Graphic symbol



**RoHS  
COMPLIANT**

## MAXIMUM RATINGS AND ELECTRICAL CHARACTERISTICS

Rating at 25 °C ambient temperature unless otherwise specified.

Rating	Symbol	GROA	GROB	GROD	GROG	GROJ	GROK	GROM	Unit
Maximum Recurrent Peak Reverse Voltage	$V_{RRM}$	50	100	200	400	600	800	1000	V
Maximum RMS Voltage	$V_{RMS}$	35	70	140	280	420	560	700	V
Maximum DC Blocking Voltage	$V_{DC}$	50	100	200	400	600	800	1000	V
Maximum Average Forward Current $T_c = 50^\circ\text{C}$	$I_{F(AV)}$	1.5							A
Maximum Peak Forward Voltage at $I_F = 1.5$ A	$V_F$	1.3							V

## GROA\_M

PRV : 50 - 1000 Volts

Io : 1.5 Amperes

Rating at 25 °C ambient temperature unless otherwise specified.

Rating	Symbol	GROA	GROB	GROD	GROG	GROJ	GROK	GROM	Unit
Maximum Peak Forward Surge Current, 8.3ms Single half sine wave superimposed on rated load (JEDEC Method)	I <sub>FSM</sub>				50				V
Maximum DC Reverse Current Ta = 25°C	I <sub>R</sub>				5				μA
at Rated DC Blocking Voltage Ta = 100°C	I <sub>R(H)</sub>				100				μA
Typical Junction capacitance (Note 2)	C <sub>J</sub>				30				pF
Junction temperature range	T <sub>J</sub>				-65 to +150				°C
Storage temperature range	T <sub>STG</sub>				-65 to +150				°C

NOTE:

1. Measured at 1.0 MHz and applied reverse voltage of 4.0 VDC

## GROA\_M

PRV : 50 - 1000 Volts

Io : 1.5 Amperes

### ■ RATING AND CHARACTERISTIC CURVES ( GROA - GROM )

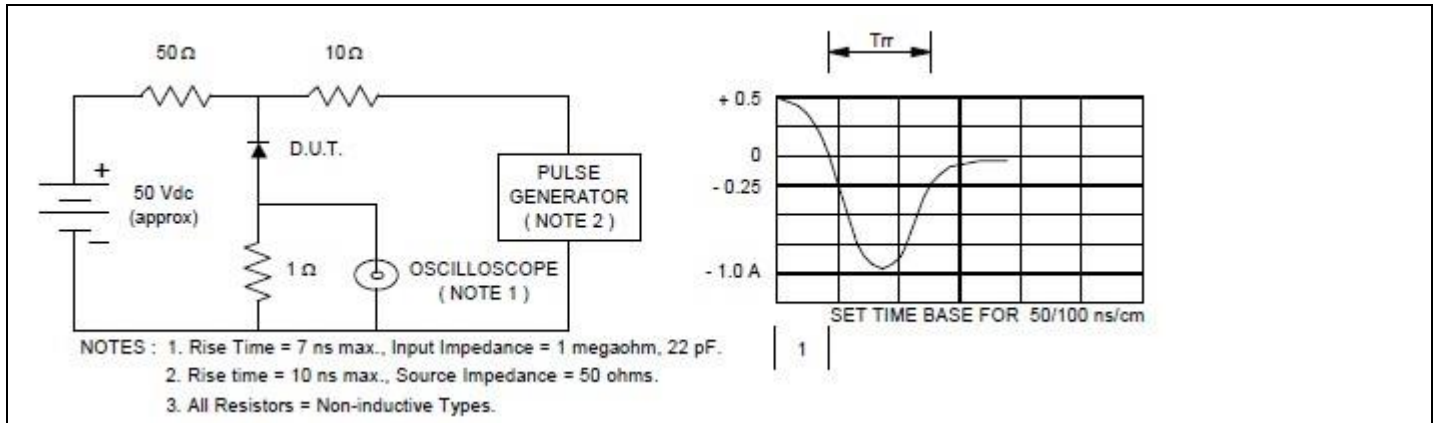


FIG.1 -REVERSE RECOVERY TIME CHARACTERISTIC AND TEST CIRCUIT DIAGRAM

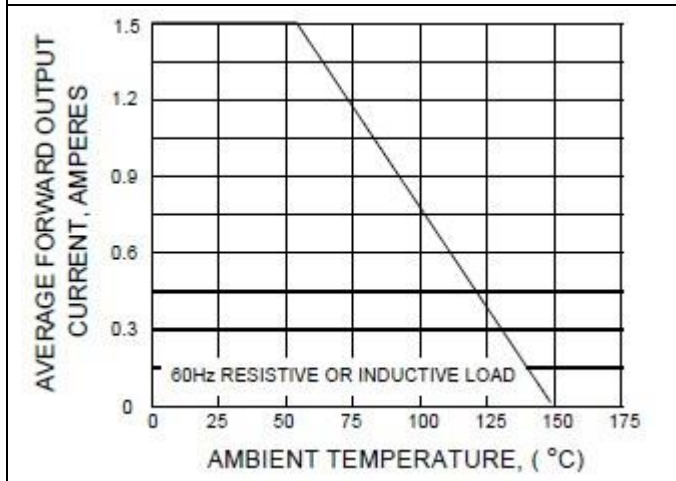


FIG.2 - DERATING CURVE FOR OUTPUT RECTIFIED CURRENT

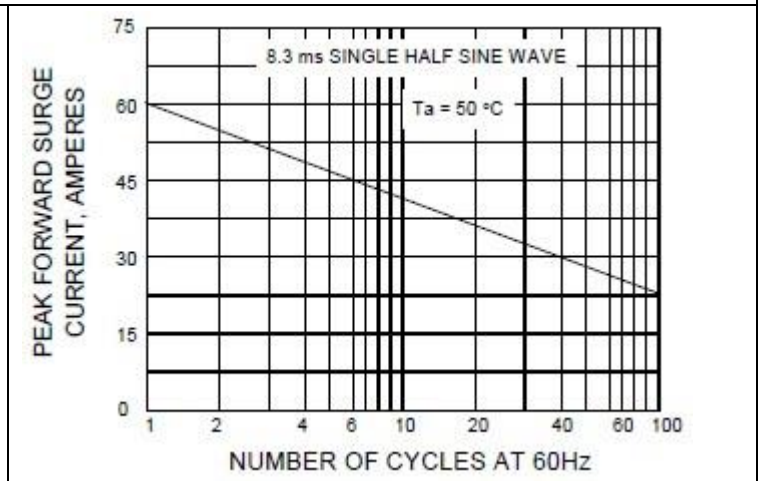


FIG.3 - MAXIMUM NON-REPETITIVE PEAK FORWARD SURGE CURRENT

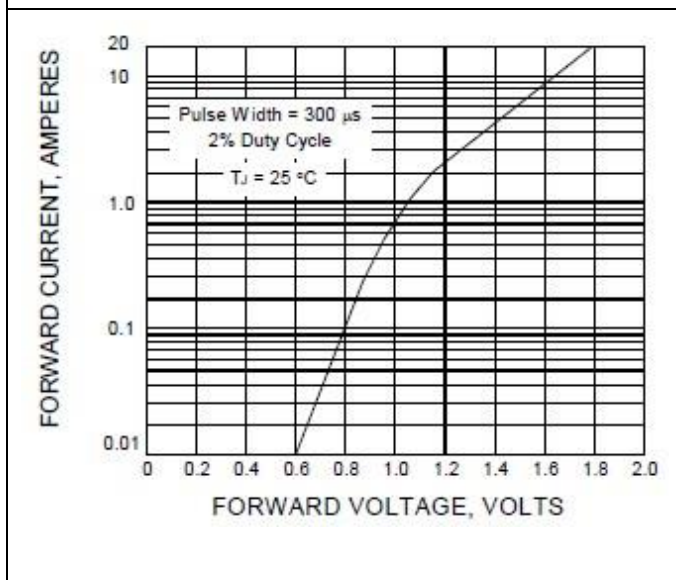


FIG.4 - TYPICAL FORWARD CHARACTERISTICS

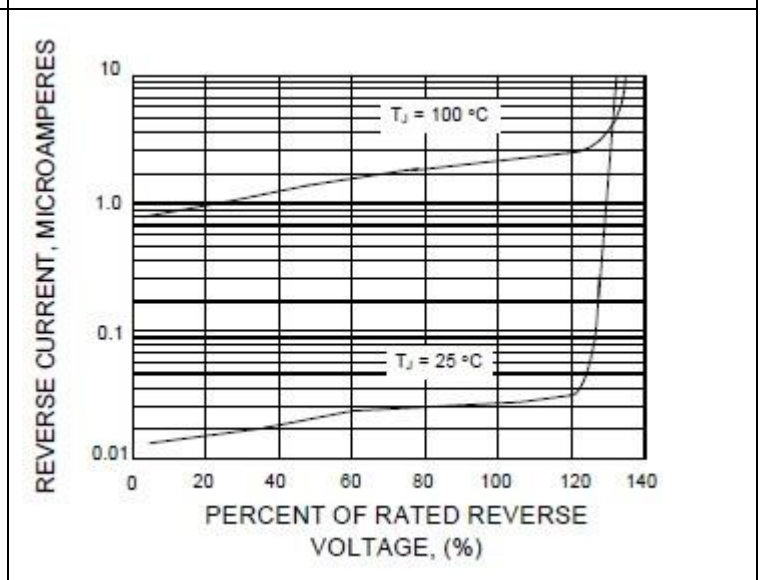


FIG.5 - TYPICAL REVERSE CHARACTERISTICS

## GROA\_M

PRV : 50 - 1000 Volts

Io : 1.5 Amperes

### Disclaimer

ALL PRODUCT, PRODUCT SPECIFICATIONS AND DATA ARE SUBJECT TO CHANGE WITHOUT NOTICE TO IMPROVE RELIABILITY, FUNCTION OR DESIGN OR OTHERWISE.

Bruckewell Technology Inc., its affiliates, agents, and employees, and all persons acting on its or their behalf (collectively, "Bruckewell"), disclaim any and all liability for any errors, inaccuracies or incompleteness contained in any datasheet or in any other disclosure relating to any product. Bruckewell makes no warranty, representation or guarantee regarding the suitability of the products for any particular purpose or the continuing production of any product. To the maximum extent permitted by applicable law, Bruckewell disclaims

- (i) Any and all liability arising out of the application or use of any product.
- (ii) Any and all liability, including without limitation special, consequential or incidental damages.
- (iii) Any and all implied warranties, including warranties of fitness for particular purpose, non-infringement and merchantability.

Statements regarding the suitability of products for certain types of applications are based on Bruckewell's knowledge of typical requirements that are often placed on Bruckewell products in generic applications.

Such statements are not binding statements about the suitability of products for a particular application. It is the customer's responsibility to validate that a particular product with the properties described in the product specification is suitable for use in a particular application. Parameters provided in datasheets and/or specifications may vary in different applications and performance may vary over time.

Product specifications do not expand or otherwise modify Bruckewell's terms and conditions of purchase, including but not limited to the warranty expressed therein.