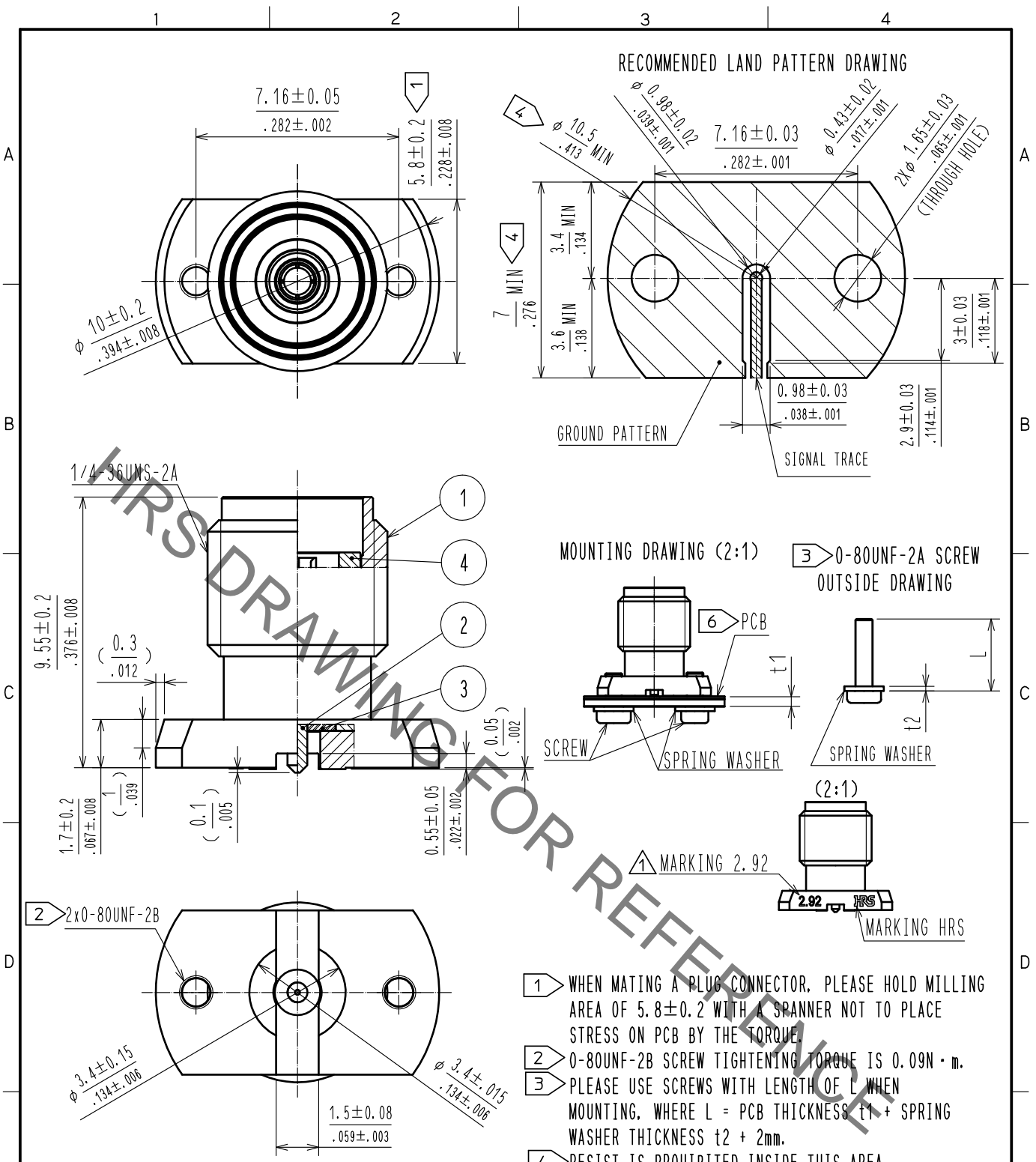


Aug. 1. 2022 Copyright 2022 HIROSE ELECTRIC CO., LTD. All Rights Reserved.
 In case of consideration for using Automotive equipment / device which demand high reliability, kindly contact our sales window correspondents.



- 1 WHEN MATING A PLUG CONNECTOR, PLEASE HOLD MILLING AREA OF 5.8 ± 0.2 WITH A SPANNER NOT TO PLACE STRESS ON PCB BY THE TORQUE.
- 2 0-80UNF-2B SCREW TIGHTENING TORQUE IS $0.09 \text{ N} \cdot \text{m}$.
- 3 PLEASE USE SCREWS WITH LENGTH OF L WHEN MOUNTING, WHERE L = PCB THICKNESS t1 + SPRING WASHER THICKNESS t2 + 2mm.
- 4 RESIST IS PROHIBITED INSIDE THIS AREA.
- 5 THIS CONNECTOR SHOULD BE USED ONLY AS TEST PORTS.
- 6 PCB THICKNESS t1 SHOULD NOT BE LESS THAN 1mm.
- 7 TRACE PATTERN DEPENDS ALSO ON ELECTRIC CONSTANT, THICKNESS AND LAYER CONSTRUCTION OF PCB. FOR BETTER RF PERFORMANCE, EM SIMULATION OF PCB WITH CONNECTOR IS RECOMMENDED.

2	BERYLLIUM COPPER	GOLD PLATING	4	STAINLESS STEEL	PASSIVATED		
1	STAINLESS STEEL	GOLD PLATING	3	PTFE			
NO.	MATERIAL	FINISH	REMARKS	NO.	MATERIAL	FINISH	REMARKS

UNITS mm / inch		SCALE 5 : 1	COUNT 2	DESCRIPTION OF REVISIONS DIS-D-00005010	DESIGNED AH. MARUYAMA	CHECKED NK. NINOMIYA	DATE 20200603
--------------------	--	----------------	------------	--	--------------------------	-------------------------	------------------

	HIROSE ELECTRIC CO., LTD.	APPROVED : TS. NOBE	20180822	DRAWING NO.	EDC-379164-00-00
		CHECKED : HA. NISHIMURA	20180822	PART NO.	HK-R-SR2-S
		DESIGNED : MH. OGUSU	20180822	CODE NO.	CL338-0006-0-00
		DRAWN : MH. OGUSU	20180822		