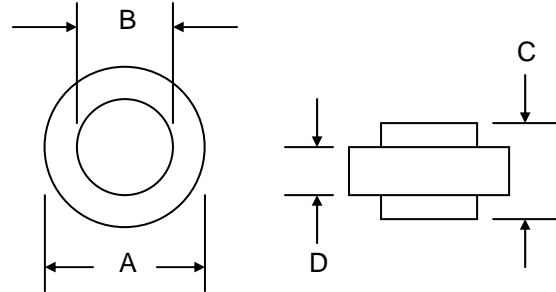


Features

- Diffused Junction
- Low Leakage
- Low Cost
- High Surge Current Capability
- Low Cost Construction Utilizing Void-Free Molded Plastic Technique



Mechanical Data

- Case: AR or ARS, Molded Plastic
- Terminals: Plated Terminals Solderable per MIL-STD-202, Method 208
- Polarity: Color Ring Denotes Cathode End
- Weight: 1.8 grams (approx.)
- Mounting Position: Any
- Marking: Type Number
- **Lead Free: For RoHS / Lead Free Version, Add "-LF" Suffix to Part Number, See Page 3**

Dim	AR		ARS	
	Min	Max	Min	Max
A	9.70	10.40	8.30	8.90
B	5.50	5.70	5.50	5.70
C	6.0	6.40	6.0	6.40
D	4.2	4.7	4.2	4.7
All Dimensions in mm				

Maximum Ratings and Electrical Characteristics @T_A=25°C unless otherwise specified

Single Phase, half wave, 60Hz, resistive or inductive load.
For capacitive load, derate current by 20%.

Characteristic	Symbol	AR/S 25A	AR/S 25B	AR/S 25D	AR/S 25G	AR/S 25J	Unit	
Peak Repetitive Reverse Voltage	V _{RRM}						V	
Working Peak Reverse Voltage	V _{RWM}	50	100	200	400	600		
DC Blocking Voltage	V _R							
RMS Reverse Voltage	V _{R(RMS)}	35	70	140	280	420	V	
Average Rectified Output Current @T _C = 150°C	I _O	25						A
Non-Repetitive Peak Forward Surge Current 8.3ms Single Half Sine-Wave Superimposed on Rated Load (JEDEC Method)	I _{FSM}	400						A
Forward Voltage @I _F = 25A	V _{FM}	1.0						V
Peak Reverse Current @T _A = 25°C At Rated DC Blocking Voltage @T _A = 100°C	I _{RM}	5.0 250						μA
Reverse Recovery Time (Note 1)	t _{rr}	3.0						μS
Typical Junction Capacitance (Note 2)	C _J	300						pF
Typical Thermal Resistance (Note 3)	R _{JC}	1.0						°C/W
Operating and Storage Temperature Range	T _J , T _{STG}	-50 to +175						°C

Note: 1. Measured with I_F = 0.5A, I_R = 1.0A, I_{RR} = 0.25A
 2. Measured at 1.0 MHz and applied reverse voltage of 4.0V D.C.
 3. Thermal Resistance: Junction to case, single side cooled.

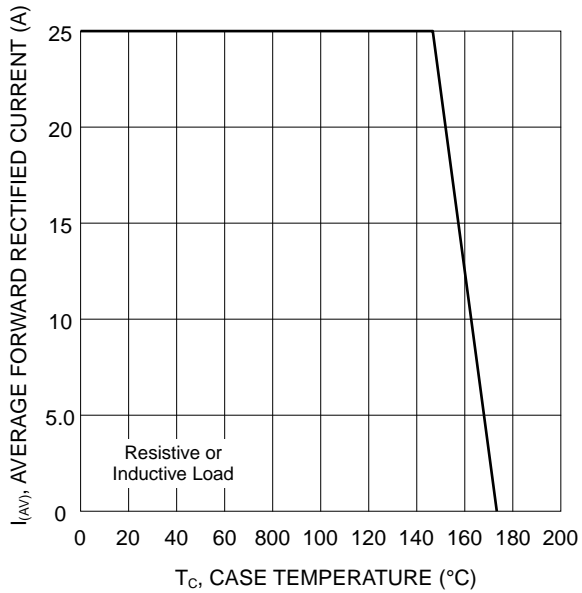


Fig. 1 Forward Current Derating Curve

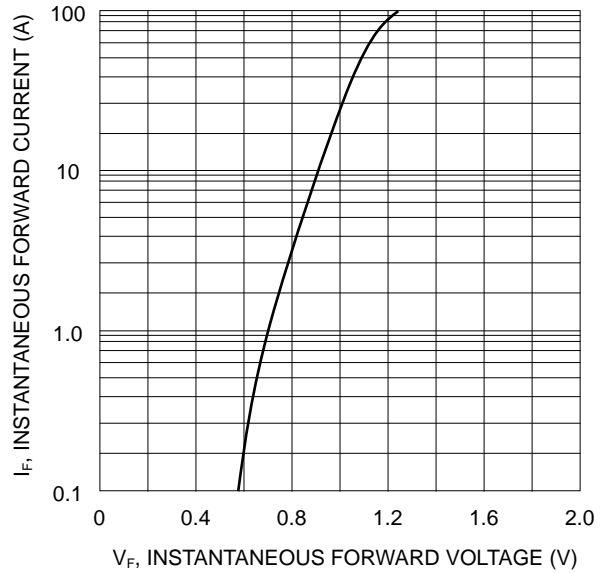


Fig. 2 Typical Forward Characteristics

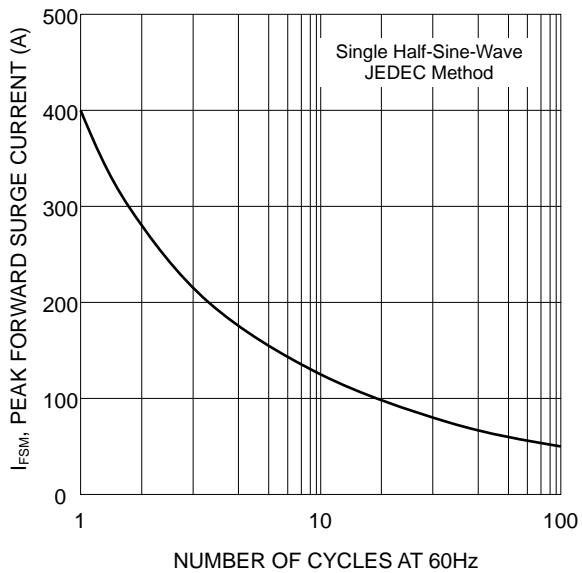


Fig. 3 Forward Surge Current Derating Curve

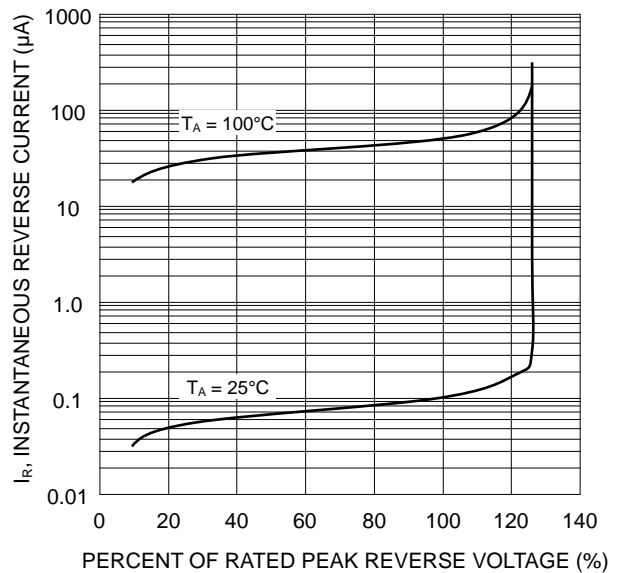



Fig. 4 Typical Reverse Characteristics

ORDERING INFORMATION

Product No.	Package Type	Shipping Quantity
AR25A	10mm Button	1000 Units/Box
ARS25A	8.6mm Button	1000 Units/Box
AR25B	10mm Button	1000 Units/Box
ARS25B	8.6mm Button	1000 Units/Box
AR25D	10mm Button	1000 Units/Box
ARS25D	8.6mm Button	1000 Units/Box
AR25G	10mm Button	1000 Units/Box
ARS25G	8.6mm Button	1000 Units/Box
AR25J	10mm Button	1000 Units/Box
ARS25J	8.6mm Button	1000 Units/Box

1. Shipping quantity given is for minimum packing quantity only. For minimum order quantity, please consult the Sales Department.
2. **To order Lead Free version (with Lead Free finish), add "-LF" suffix to part number above. For example, AR25A-LF.**

WON-TOP ELECTRONICS and  are registered trademarks of Won-Top Electronics Co., Ltd (WTE). WTE has checked all information carefully and believes it to be correct and accurate. However, WTE cannot assume any responsibility for inaccuracies. Furthermore, this information does not give the purchaser of semiconductor devices any license under patent rights to manufacturer. WTE reserves the right to change any or all information herein without further notice.

WARNING: DO NOT USE IN LIFE SUPPORT EQUIPMENT. WTE power semiconductor products are not authorized for use as critical components in life support devices or systems without the express written approval.

Won-Top Electronics Co., Ltd.
No. 44 Yu Kang North 3rd Road,
Chine Chen Dist., Kaohsiung 806, Taiwan
Phone: 886-7-822-5408 or 886-7-822-5410
Fax: 886-7-822-5417
Email: sales@wontop.com
Internet: <http://www.wontop.com>

We power your everyday.