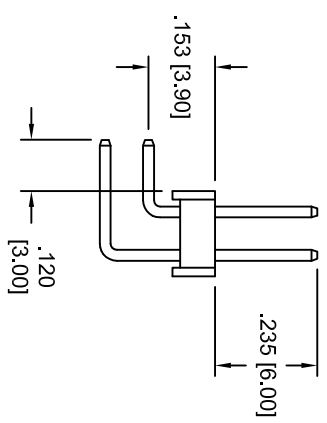
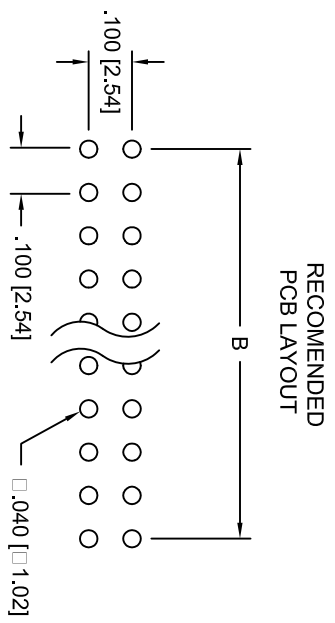
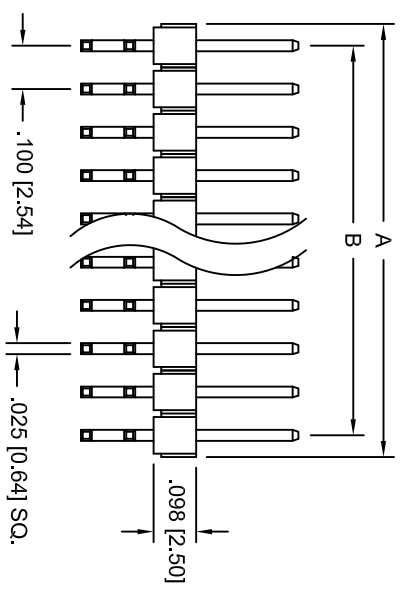
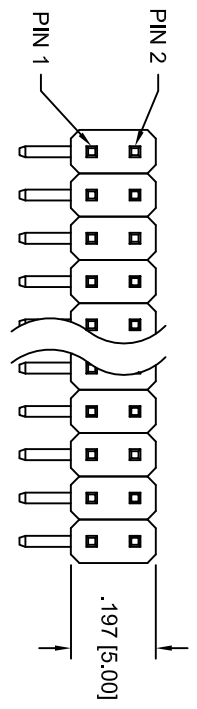


Rev	AWO #	Description	Date	Appr
-		RELEASED	9/20/04	

APPROVED: \_\_\_\_\_  
 DATE: \_\_\_\_\_ TITLE: \_\_\_\_\_



**SPECIFICATIONS:**  
 Material: Insulator: PBT, glass reinforced, rated UL 94V-0  
 Insulator color: Black  
 Contacts: Brass  
 Plating: Tin over Nickel underplate overall

**Electrical:**  
 Current rating: 3 Amps max  
 Contact resistance: 20 mohms max  
 Insulation resistance: 5,000 Mohms min @ 500 VDC  
 Dielectric withstanding voltage: 500 VAC for 1 minute  
 Temperature Rating: Operating temperature: -40°C to +105°C  
 Environmental: Lead free, RoHS compliant

Positions: 4 thru 80  
 A = .100 [2.54] x No. of Positions per Row  
 B = .100 [2.54] x No. of Spaces

UNLESS OTHERWISE SPECIFIED  
 ALL DIMENSIONS ARE INCHES [MM]  
 TOLERANCES: EXCEPT AS NOTED

INCHES	HOLES
.X ± .10	ØXX ± .10
.XX ± .020	ØXXX ± .015
.XXX ± .015	ØXXXX ± .010

APPROVALS: \_\_\_\_\_ DATE: \_\_\_\_\_

**ADAM TECH**  
 909 Railway Avenue, Union, NJ 07083  
 Phone: 908-687-5000 Fax: 908-687-5710

TITLE: DUAL ROW PIN HEADER, .100" [2.54mm]  
 PITCH, TIN PLATED, 4 TO 80 PINS

DRAWN	SS	DATE	SIZE	PART NO.	REV.
CHECKED			X	PH2RA-XX-1A	-
APPROVED			REF:	SCALE: NTS	SHEET 1 OF 1



6 5 4 3 2 1