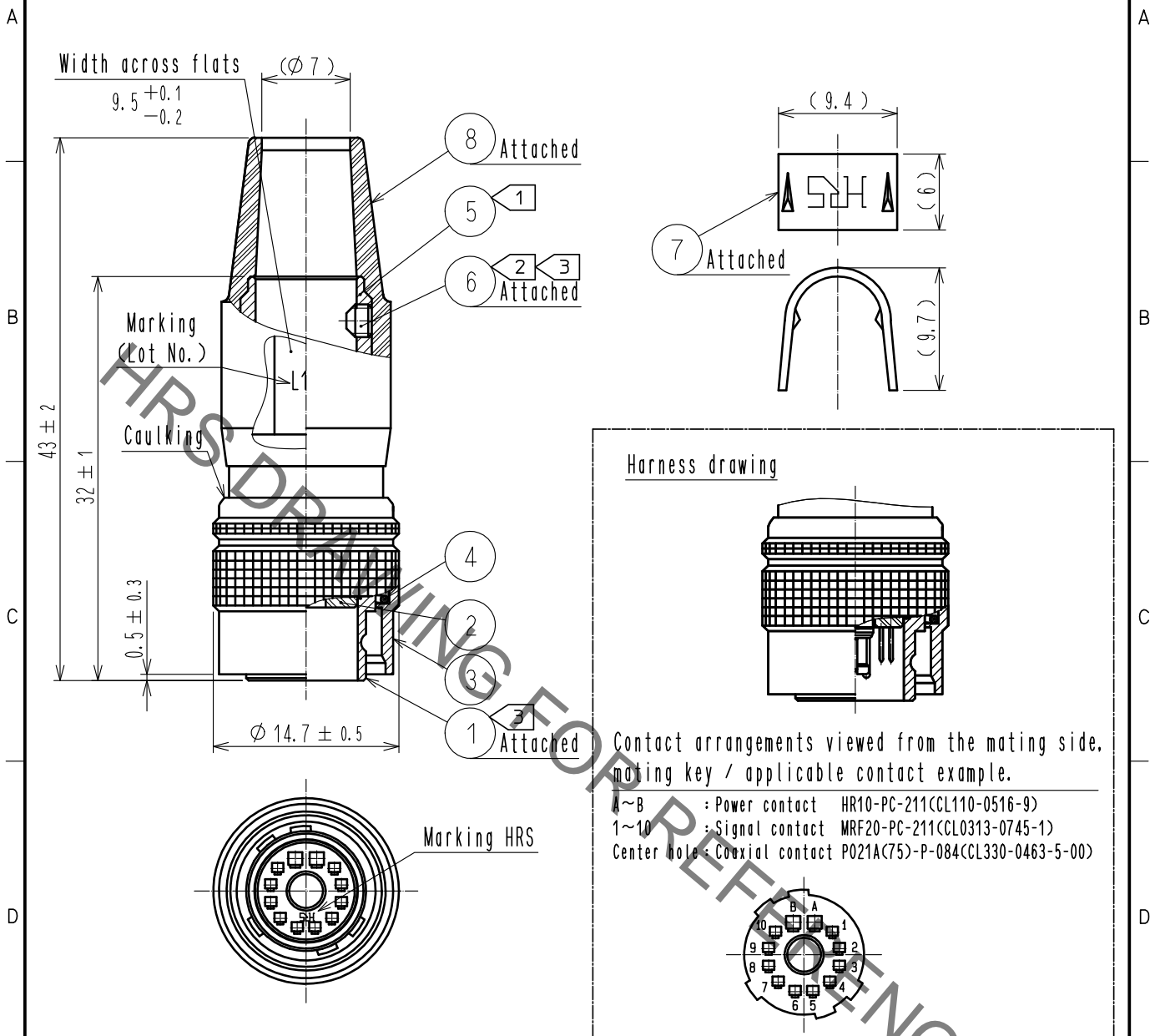


Aug. 1. 2022 Copyright 2022 HIROSE ELECTRIC CO., LTD. All Rights Reserved.
In case of consideration for using Automotive equipment / device which demand high reliability, kindly contact our sales window correspondents.

ASSEMBLY TOOL
 PART ⑦ CRIMPING TOOL : HR10A-TC-02(CL150-0041-2) φ7
 ※POWER/SIGNAL/COAXIAL CONNECTOR'S TOOL SHOULD REFER TO EACH DRAWING.



- NOTES
- ① THE RECOMMENDED CLAMP TORQUE, REF. NO. ⑤ : 2 TO 2.5N · m.
 - ② ACROSS FLATS HEXAGON HEAD OF REF. NO. ⑥ : 1.27
THE RECOMMENDED CLAMP TORQUE, REF. NO. ⑥ : 0.3 TO 0.4N · m.
 - ③ LOCTITE 243, HENKEL JAPAN OR EQUIVALENT IS RECOMMENDED TO PREVENT REF. NO. ① AND ⑥ FROM LOOSENING.
 - 4. ONE EXAMPLE OF THE ROTATION OF REF. NO. ⑤ TO REF. NO. ① IS SHOWN.

4	STEEL	NICKEL PLATING	8	CHLOROPRENE RUBBER	<BLACK>
3	BRASS	NICKEL PLATING	7	BRASS	
2	PBT	<BLACK> UL94V-0	6	STEEL	NICKEL PLATING
1	ZINC ALLOY	NICKEL PLATING	5	BRASS	NICKEL PLATING
NO.	MATERIAL	FINISH . REMARKS	NO.	MATERIAL	FINISH . REMARKS

UNITS mm		SCALE 2 : 1	COUNT 	DESCRIPTION OF REVISIONS	DESIGNED	CHECKED	DATE
HRS HIROSE ELECTRIC CO., LTD.		APPROVED : NK. NINOMIYA	20211228	DRAWING NO.	EDC-357116-00-00		
		CHECKED : NK. NINOMIYA	20211228	PART NO.	MRF20-10P-12PC/1RF(A)		
		DESIGNED : MT. KANEKO	20211228	CODE NO.	CL0313-0737-3-00		
		DRAWN : NK. OOSHIMA	20211224		1/1		