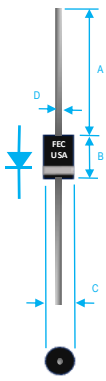


## 3A GLASS PASSIVATED ULTRA FAST RECOVERY RECTIFIER



| Dim. | Value in [mm] |             |
|------|---------------|-------------|
|      | Min.          | Max.        |
| A    | 1.000[25.40]  | ---         |
| B    | 0.335[8.51]   | 0.375[9.52] |
| C    | 0.097[5.00]   | 0.220[5.59] |
| D    | 0.048[1.22]   | 0.052[1.32] |

### PRODUCT FEATURES

1. FLAMMABILITY CLASSIFICATION: 94V-0
2. GLASS PASSIVATED CHIP JUNCTION
3. LOW FORWARD VOLTAGE DROP
4. HIGH SURGE CURRENT CAPABILITY
5. ULTRA FAST SWITCHING
6. CASE: MOLDED PLASTIC, DO201AD
7. POLARITY: INDICATED BY CATHODE BAND
8. WEIGHT : 1.2 GRAMS
9. TERMINALS : PER MIL-STD-202, METHOD 208
10. PULLING TEST: 2.3 KG
11. ROHS

MAXIMUM RATINGS AND ELECTRICAL CHARACTERISTICS RATINGS AT 25°C AMBIENT TEMPERATURE UNLESS OTHERWISE SPECIFIED STORAGE AND OPERATING TEMPERATURE RANGE -55°C TO + 150°C. SINGLE PHASE, HALF WAVE, 60 HZ, RESISTIVE OR INDUCTIVE LOAD. FOR CAPACITIVE LOAD, DERATE CURRENT BY 20%

| RATINGS   | SYMBOL | VALUE | UNITS |
|---|--------|-------|-------|
| MAXIMUM AVERAGE FORWARD RECTIFIED CURRENT 0.375"(9.5mm) LEAD LENGTH @ TA=55°C | IO     | 3     | A     |
| PEAK FWD SURGE CURRENT, 8.3ms HALF SINE-WAVE SUPERIMPOSED ON RATED LOAD       | IFSM   | 150   | A     |
| TYPICAL THERMAL RESISTANCE (NOTE 2)   | Rqja   | 20    | °C/W  |
| MAXIMUM REVERSE CURRENT @ 25°C  | IR     | 5     | uA    |
| MAXIMUM REVERSE CURRENT @ 100°C   | IR     | 50    | uA    |

1. Cj MEASURED @ 1 MHZ AND APPLIED REVERSE VOLTAGE OF 4.0 VOLTS
2. BOTH LEADS ATTACHED TO HEAT SINK 20x20x1t(mm) COPPER PLATE @ LEAD LENGTH 5mm
3. REVERSE RECOVERY TEST CONDITIONS: IF=0.5A, IR=1.0A, IRR=0.25A
4. MAXIMUM FORWARD VOLTAGE @ Io DC

| PART NUMBER | MAX RECURRENT PK REV VOLTAGE VRRM (V) | MAX RMS VOLTAGE VRMS (V) | MAX DC BLOCKING VOLTAGE VDC (V) | MAX FWD VOLTAGE VF (V) | TYPICAL JUNCTION CAP CJ (PF) | MAX REVERSE RECOVERY TIME nS |
|-------------|---------------------------------------|--------------------------|---------------------------------|------------------------|------------------------------|------------------------------|
| FUF5400     | 50                                    | 35                       | 50                              | 1.3                    | 75                           | 50                           |
| FUF5401     | 100                                   | 70                       | 100                             | 1.3                    | 75                           | 50                           |
| FUF5402     | 200                                   | 140                      | 200                             | 1.3                    | 75                           | 50                           |
| FUF5403     | 300                                   | 210                      | 300                             | 1.3                    | 75                           | 50                           |
| FUF5404     | 400                                   | 280                      | 400                             | 1.3                    | 75                           | 50                           |
| FUF5406     | 600                                   | 420                      | 600                             | 1.7                    | 50                           | 75                           |
| FUF5407     | 800                                   | 560                      | 800                             | 1.7                    | 50                           | 75                           |
| FUF5408     | 1000                                  | 700                      | 1000                            | 1.7                    | 50                           | 75                           |

## RATING AND CHARACTERISTIC CURVES

FIG. 1-TEST CIRCUIT DIAGRAM AND REVERSE RECOVERY TIME CHARACTERISTIC

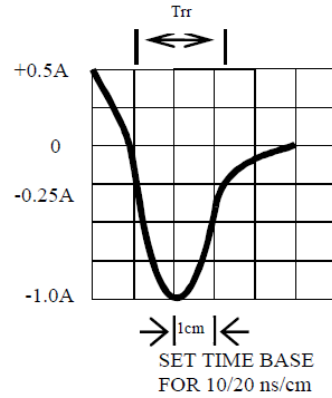
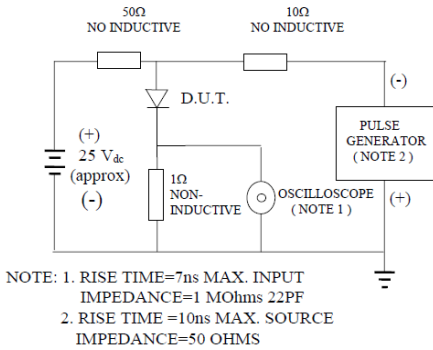


FIG. 2 -TYPICAL FORWARD CURRENT DERATING CURVE

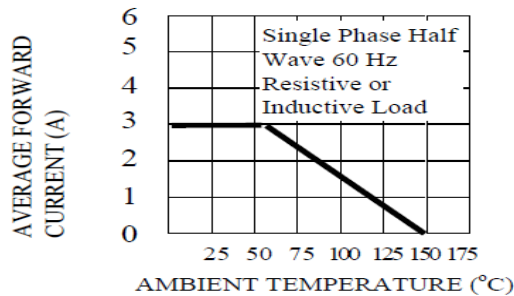


FIG. 3 -TYPICAL REVERSE CHARACTERISTICS

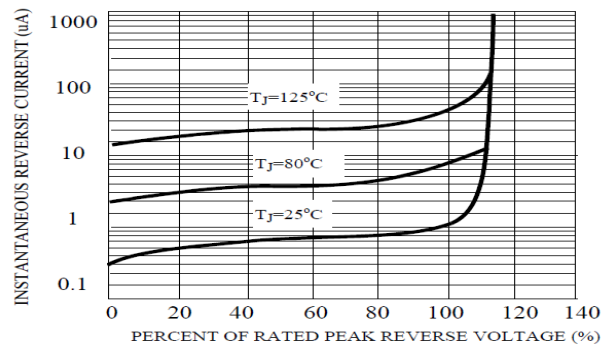


FIG. 4 -TYPICAL INSTANTANEOUS FORWARD CHARACTERISTICS

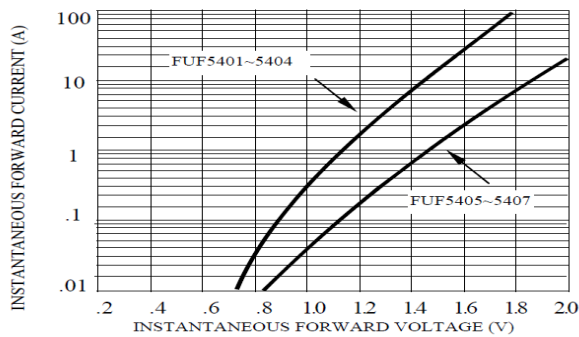
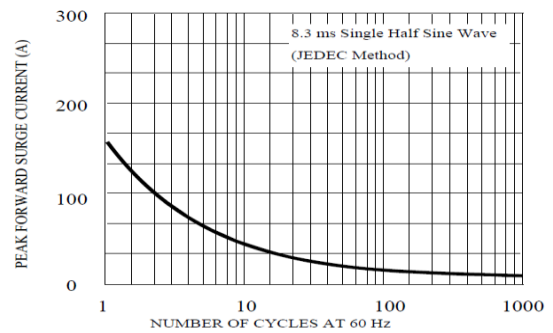


FIG. 5 -MAXIMUM NON-REPETITIVE FORWARD SURGE CURRENT





# FUF5400 THRU FUF5408 SPECIFICATIONS

Rev. A

