

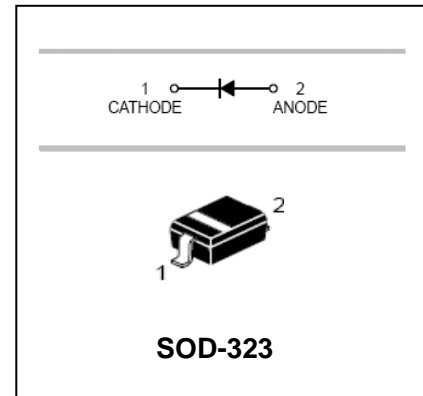
Surface Mount Switching Diodes

BAS16H

FEATURES

- Fast switching
- Designed for surface mount application

HF



APPLICATIONS

- Surface mount fast switching diode

ORDERING INFORMATION

Type No.	Marking	Package Code
BAS16H	A6	SOD-323

MAXIMUM RATING @ Ta=25°C unless otherwise specified

Characteristic	Symbol	Value	Unit
Continuous Reverse Voltage	V_R	75	V
Forward Continuous Current	I_F	200	mA
Peak forward surge current	$I_{FM(surge)}$	500	mA
Power Dissipation	P_D	200	mW
Thermal Resistance Junction to Ambient	$R_{\theta JA}$	635	°C/W
Thermal Resistance Junction to Case	$R_{\theta JC}$	350	°C/W
Junction and Storage Temperature Range	T_j, T_{STG}	-55 to +150	°C

ELECTRICAL CHARACTERISTICS @ Ta=25°C unless otherwise specified

Characteristic	Symbol	Min	Max	Unit	Test Condition
Reverse Breakdown Voltage	$V_{(BR)R}$	75	-	V	$I_R=100\mu A$
Forward Voltage	V_F	-	715 855 1000 1250	mV	$I_F=1.0mA$ $I_F=10mA$ $I_F=50mA$ $I_F=150mA$
Reverse Current	I_R	-	1.0 50 30	μA	$V_R=75V$ $V_R=75V, T_J=150^\circ C$ $V_R=25V, T_J=150^\circ C$
Diode Capacitance	C_D	-	2	pF	$V_R=0, f=1.0MHz$
Forward recovery voltage	V_{FR}	-	1.75	V	$I_F=10mA, t_r=20nS$
Stored Charge	Q_S	-	45	pC	$I_F=10mA$ to $V_R=5.0V$ $R_L=500\Omega$
Reverse Recovery Time	t_{rr}	-	5	ns	$I_F=I_R=10mA, R_L=50\Omega$

Surface Mount Switching Diodes

BAS16H

TYPICAL CHARACTERISTICS @ $T_a=25^\circ\text{C}$ unless otherwise specified

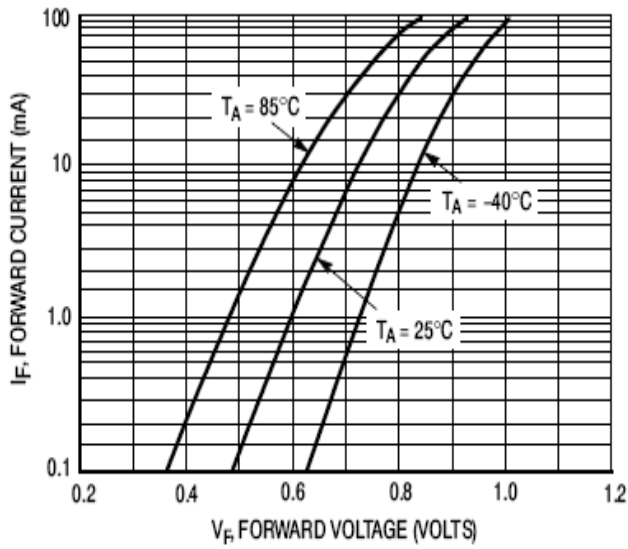


Figure 2. Forward Voltage

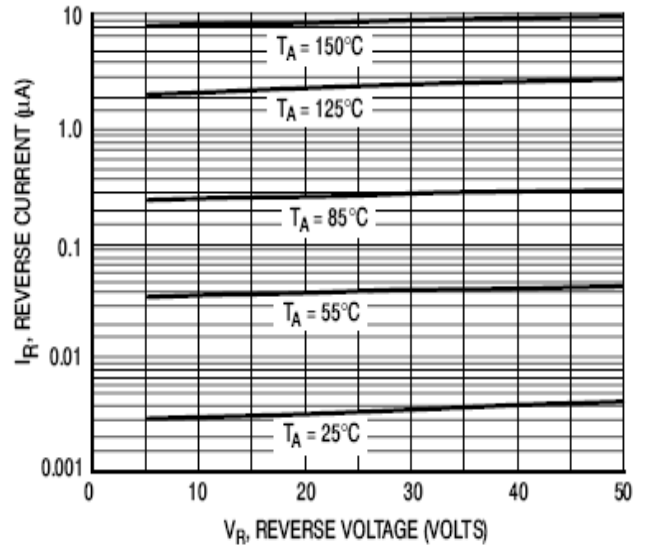


Figure 3. Leakage Current

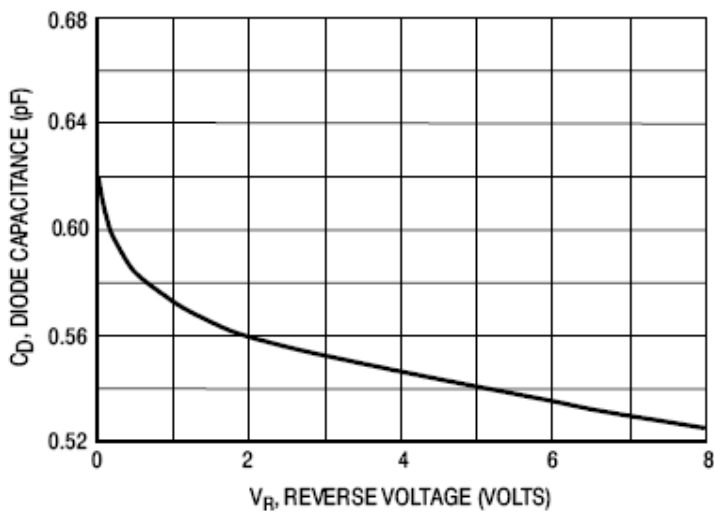


Figure 4. Capacitance

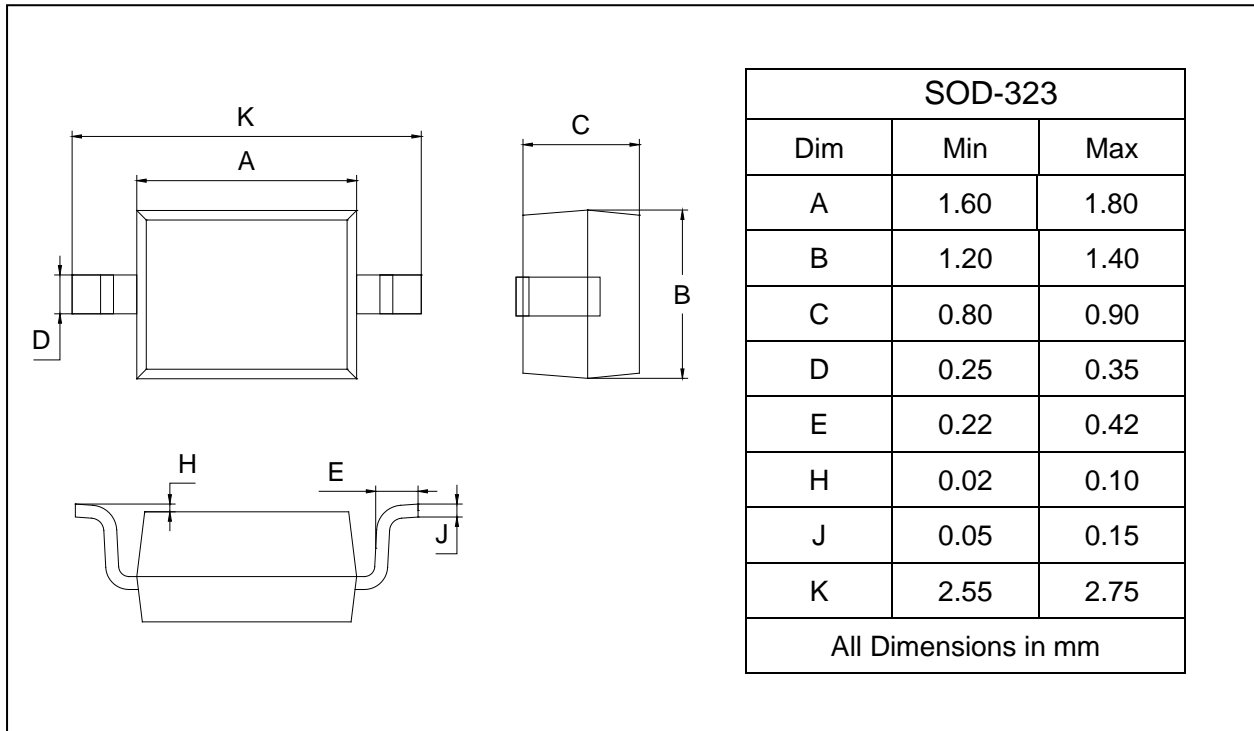
Surface Mount Switching Diodes

BAS16H

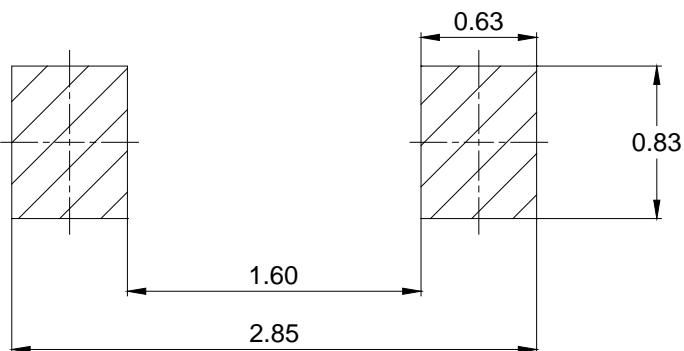
PACKAGE OUTLINE

Plastic surface mounted package

SOD-323



SOLDERING FOOTPRINT



Unit: mm

PACKAGE INFORMATION

Device	Package	Shipping
BAS16H	SOD-323	3000 pcs/ Tape & Reel