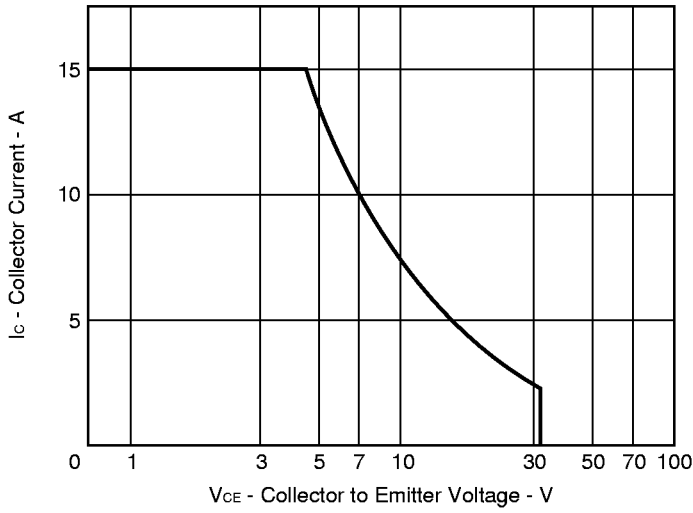
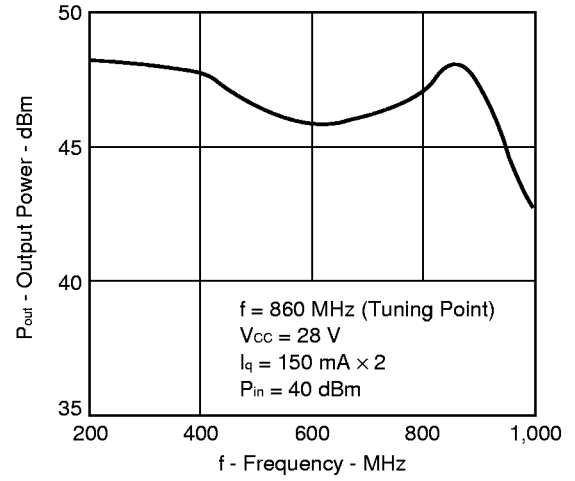


TYPICAL CHARACTERISTICS (T_A = 25 °C)

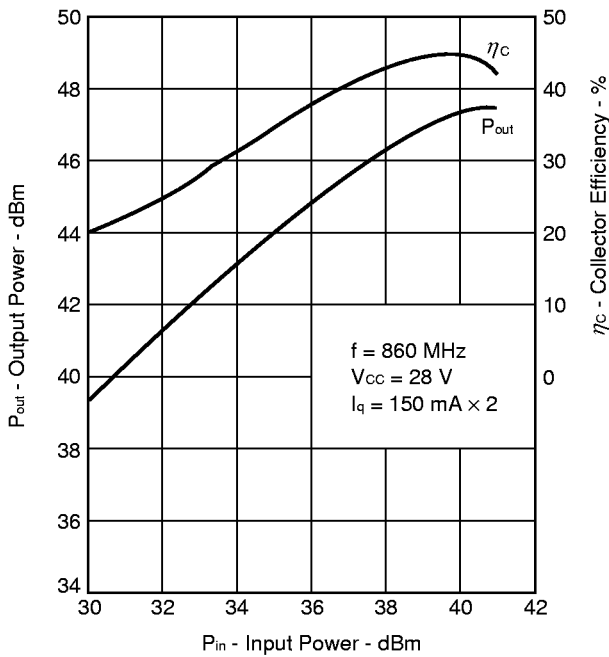
FORWARD BIAS SAFE OPERATING AREA (DC)



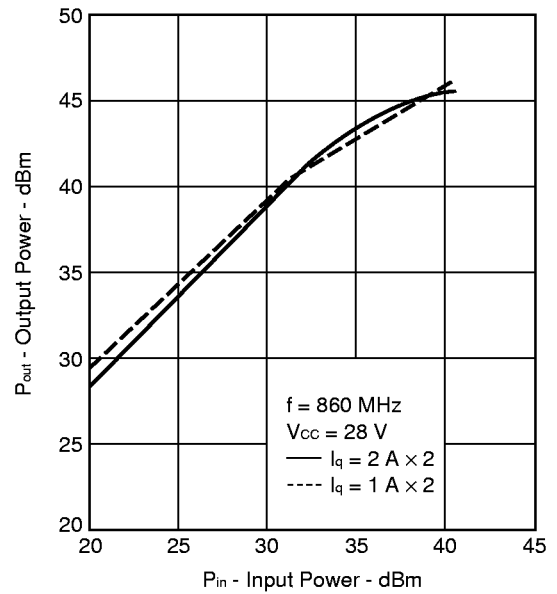
FREQUENCY RESPONSE



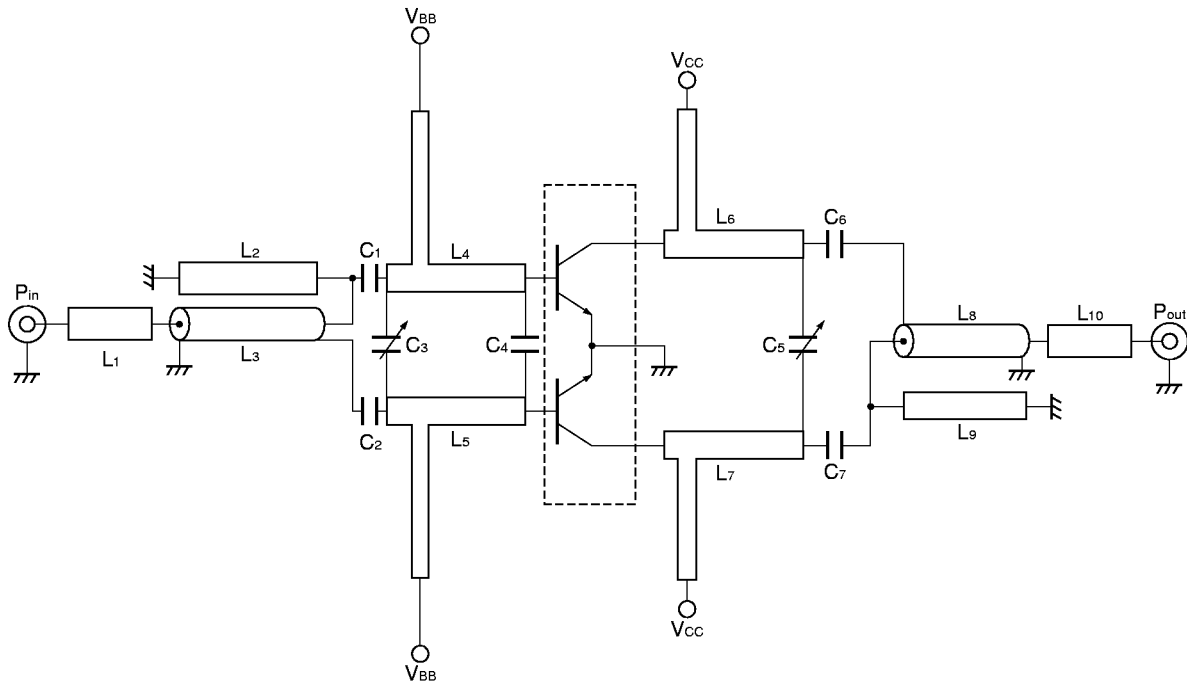
OUTPUT POWER AND COLLECTOR EFFICIENCY vs. INPUT POWER



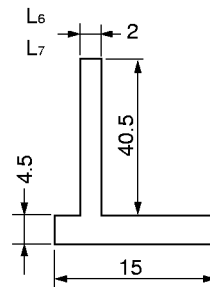
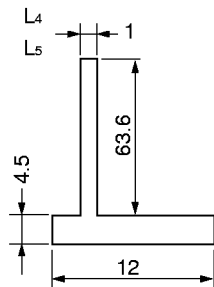
OUTPUT POWER vs. INPUT POWER



APPLICATION CIRCUIT EXAMPLE



- C₁ = C₂ = 20 pF
- C₃ = 20 pF
- C₄ = 10 pF
- C₅ = 20 pF
- C₆ = C₇ = 75 pF
- L₁ L₁₀ Micro-strip line 23.6 × 4.5 mm
- L₂ L₉ 50 Ω Semi-rigid cable 70 mm
- L₄ to L₇ Micro-strip line (in millimeters)



Substrate material: Teflon glass t = 1.6 mm

This datasheet has been downloaded from:

www.DatasheetCatalog.com

Datasheets for electronic components.