





**Solid State Devices, Inc.**

14701 Firestone Blvd \* La Mirada, Ca 90638  
 Phone: (562) 404-4474 \* Fax: (562) 404-1773  
 ssdi@ssdi-power.com \* www.ssdi-power.com

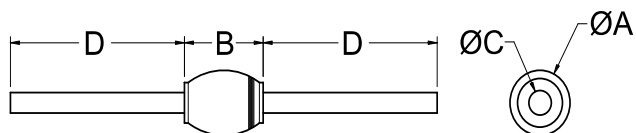
# SPD6620 thru SPD6625 Series

## ELECTRICAL CHARACTERISTICS<sup>3/</sup>

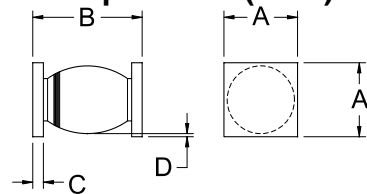
CHARACTERISTICS	SYMBOL	VALUE	UNIT	
<b>Instantaneous Forward Voltage Drop</b> (300 $\mu$ s Pulse, $T_A = 25^\circ\text{C}$ )	SPD6620 thru SPD6622 @ 1.2A SPD6623 and SPD6624 @ 1.0A SPD6625 @ 1.0A	$\frac{6/}{V_{F1}}$	1.40 1.55 1.75	<b>Vdc</b>
	SPD6620 thru SPD6622 @ 2.0A SPD6623 and SPD6624 @ 1.5A SPD6625 @ 1.5A	$\frac{6/}{V_{F2}}$	1.60 1.80 1.95	
<b>Instantaneous Forward Voltage Drop</b> (300 $\mu$ s Pulse, $T_A = -55^\circ\text{C}$ )	SPD6620 thru SPD6622 @ 2.0A SPD6623 and SPD6624 @ 1.5A SPD6625 @ 1.5A	$\frac{6/}{V_{F3}}$	1.80 2.00 2.20	<b>Vdc</b>
<b>Maximum Reverse Leakage Current</b> (Rated $V_R$ , 300 $\mu$ s Pulse Minimum , $T_A = 25^\circ\text{C}$ )	SPD6620 Thru SPD6624 SPD6625	$I_{R1}$	2.0	<b><math>\mu</math>A</b>
<b>Maximum Reverse Leakage Current</b> (Rated $V_R$ , 300 $\mu$ s Pulse Minimum , $T_A = 100^\circ\text{C}$ )	SPD6620 Thru SPD6624 SPD6625	$I_{R2}$	150 200	<b><math>\mu</math>A</b>
<b>Junction Capacitance</b> ( $V_R = 10$ Vdc, $T_A = 25^\circ\text{C}$ , $f = 1$ MHz)	SPD6620 thru SPD6622 SPD6623 and SPD6624 SPD6625	$C_J$	24 17 13	<b>pf</b>
<b>Maximum Reverse Recovery Time</b> ( $I_F = 500$ mA, $I_R = 1$ A, $I_{RR} = 250$ mA)	SPD6620 thru SPD6622 SPD6623 and SPD6624 SPD6625	$\frac{6/}{t_{rr}}$	30 50 60	<b>ns</b>

DIMENSIONS (inches)				DIMENSIONS (inches)			
DIM.	SPD6620 - SPD6622	SPD6623 - SPD6624	SPD6625	DIM.	SPD6620SMS - SPD6622SMS	SPD6623SMS - SPD6624SMS	SPD6625SMS
A	.100/.128	.100/.120	.115/.128	A	.128/.132	.128/.132	.128/.132
B	.140/.190	.140/.165	.140/.165	B	.190/.240	.190/.230	.190/.230
C	.027/.032	.027/.032	.028 / .033	C	.023/.027	.023/.027	.023/.027
D	1.0 Min	1.0 min	1.0 min	D	.001 min	.001 min	.001 min

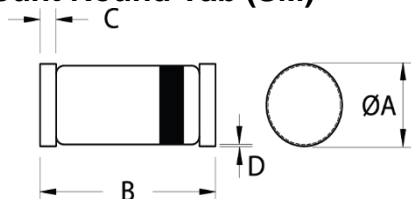
### AXIAL<sup>5/</sup>



### Surface Mount Square Tab(SMS)



### Surface Mount Round Tab (SM)



DIMENSIONS (inches) SPD6620SM – SPD6622SM		
DIM.	MIN.	MAX.
A	.095	.105
B	.190	.210
C	.010	.030
D	---	---

**NOTE:** All specifications are subject to change without notification.  
 SCD's for these devices should be reviewed by SSDI prior to release.

**DATA SHEET #: RC0102H**

**DOCX**