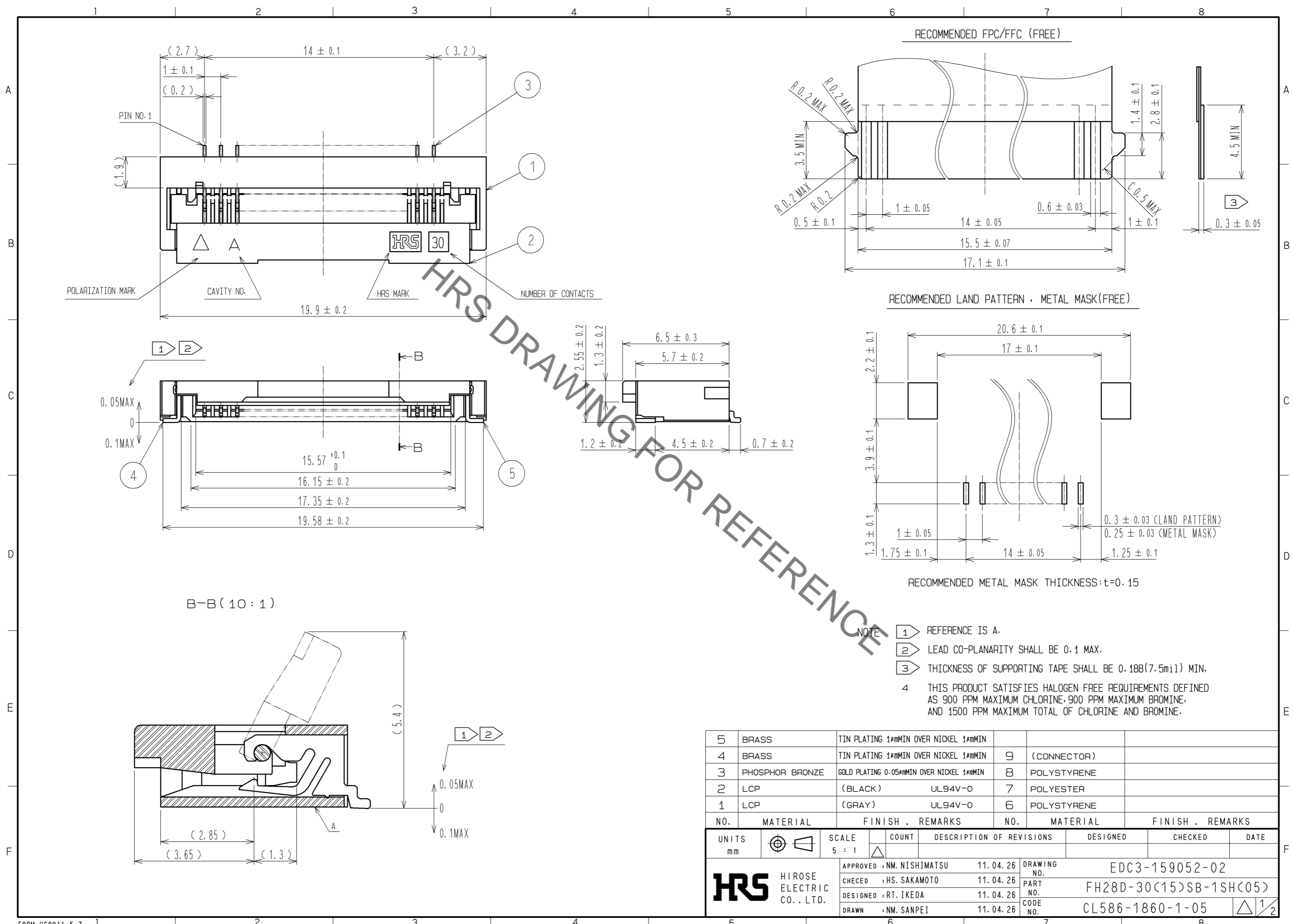
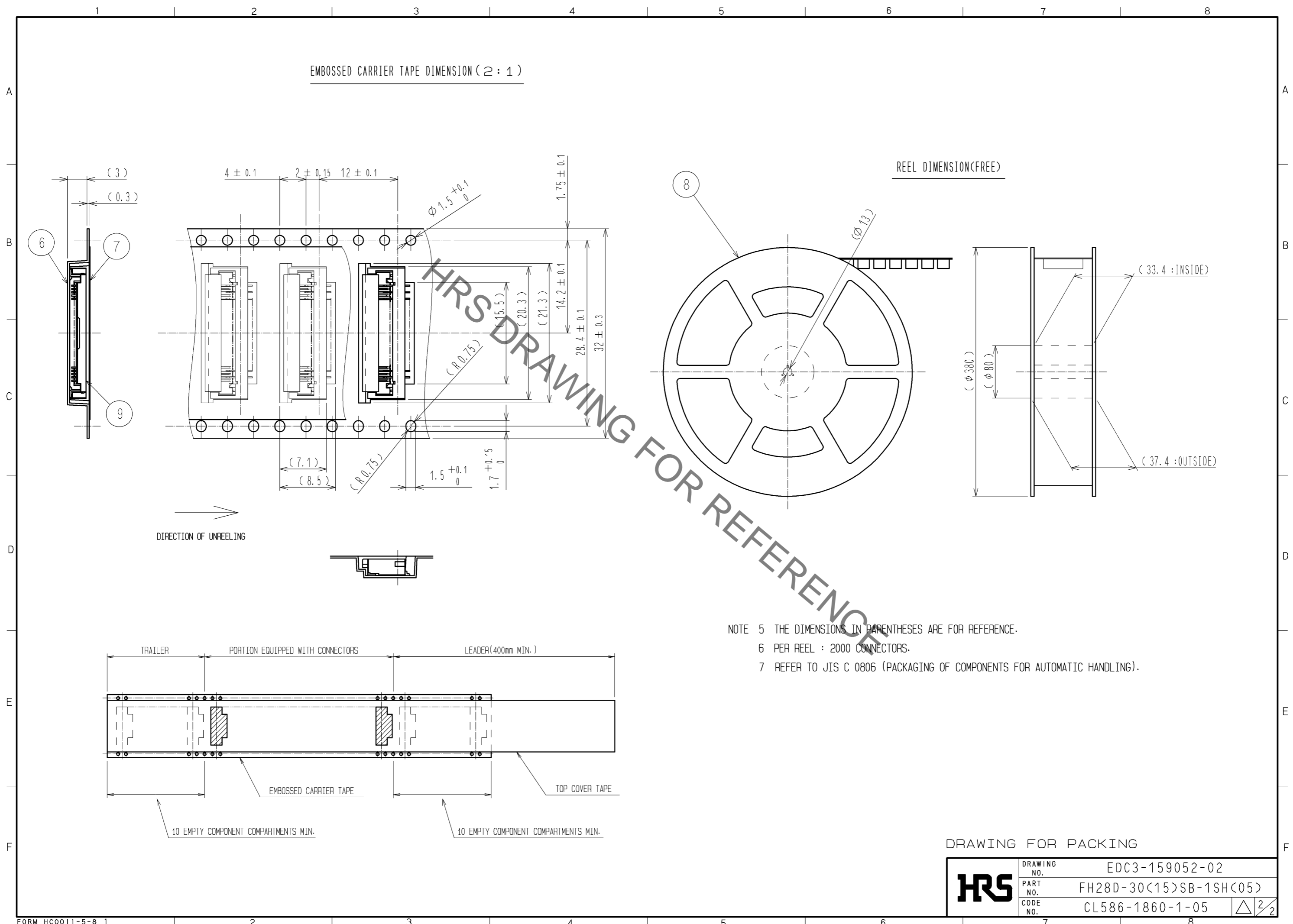


Aug.1.2022 Copyright 2022 HIROSE ELECTRIC CO., LTD. All Rights Reserved.
In case of consideration for using Automotive equipment / device which demand high reliability, kindly contact our sales window correspondents.



| 5 | BRASS | TIN PLATING 1#mMIN OVER NICKEL 1#mMIN | | | | | | |
|--------------------------------------|-----------------|---|----------|----------------------------------|--------------------------|----------|---------|------|
| 4 | BRASS | TIN PLATING 1#mMIN OVER NICKEL 1#mMIN | 9 | (CONNECTOR) | | | | |
| 3 | PHOSPHOR BRONZE | GOLD PLATING 0.05#mMIN OVER NICKEL 1#mMIN | 8 | POLYSTYRENE | | | | |
| 2 | LCP | (BLACK) UL94V-0 | 7 | POLYESTER | | | | |
| 1 | LCP | (GRAY) UL94V-0 | 6 | POLYSTYRENE | | | | |
| NO. | MATERIAL | FINISH . REMARKS | NO. | MATERIAL | FINISH . REMARKS | | | |
| UNITS | mm | SCALE | 5 : 1 | COUNT | DESCRIPTION OF REVISIONS | DESIGNED | CHECKED | DATE |
| HRS HIROSE ELECTRIC CO., LTD. | | APPROVED : NM. NISHIMATSU | 11.04.26 | DRAWING NO. EDC3-159052-02 | | | | |
| | | CHECED : HS. SAKAMOTO | 11.04.26 | PART NO. FH28D-30(15)SB-1SH(C05) | | | | |
| | | DESIGNED : RT. IKEDA | 11.04.26 | CODE NO. CL586-1860-1-05 | | | | |
| | | DRAWN : NM. SANPEI | 11.04.26 | | | | | |

Aug.1.2022 Copyright 2022 HIROSE ELECTRIC CO., LTD. All Rights Reserved.
 In case of consideration for using Automotive equipment / device which demand high reliability, kindly contact our sales window correspondents.



DRAWING FOR PACKING

| | | | |
|------------|-------------|------------------------|-------|
| HRS | DRAWING NO. | EDC3-159052-02 | |
| | PART NO. | FH28D-30<15>SB-1SH<05> | |
| | CODE NO. | CL586-1860-1-05 | △ 2/2 |
| | | | |