

**BD896 – BD898 – BD900 – BD902**
**SILICON DARLINGTON POWER TRANSISTORS**

PNP epitaxial-base transistors in a monolithic Darlington circuit and housed in a TO-220 envelope. They are intended for use in output stages in audio equipment, general amplifiers, and analogue switching application.

NPN complements are BD895 - BD897 - BD899 - BD901

Compliance to RoHS.

**ABSOLUTE MAXIMUM RATINGS**

Symbol	Ratings	Value	Unit	
$V_{CBO}$	Collector-Base Voltage	BD896	-45	V
		BD898	-60	
		BD900	-80	
		BD902	-100	
$V_{CEO}$	Collector-Emitter Voltage	BD896	-45	V
		BD898	-60	
		BD900	-80	
		BD902	-100	
$V_{EBO}$	Emitter-Base Voltage	BD896	-5	V
		BD898		
		BD900		
		BD902		
$I_C$	Collector Current	BD896	-8	A
		BD898		
		BD900		
		BD902		
$I_B$	Base Current	BD896	-300	mA
		BD898		
		BD900		
		BD902		
$P_T$	Power Dissipation	$T_c = 25^\circ$	70	Watts
		$T_a = 25^\circ$	2	
$T_J$	Junction Temperature	150	°C	
$T_s$	Storage Temperature range	-65 to +150		

**BD896 – BD898 – BD900 – BD902**
**ELECTRICAL CHARACTERISTICS**

TC=25°C unless otherwise noted

Symbol	Ratings	Test Condition(s)		Min	Typ	Max	Unit	
$I_{CBO}$	Collector Cutoff Current	$I_E = 0$ $V_{CB} = -45\text{ V}$	$T_C = 25^\circ\text{C}$	BD896	-	-	-0.2	mA
		$I_E = 0$ $V_{CB} = -60\text{ V}$		BD898				
		$I_E = 0$ $V_{CB} = -80\text{ V}$		BD900				
		$I_E = 0$ $V_{CB} = -100\text{ V}$		BD902				
		$I_E = 0$ $V_{CB} = -45\text{ V}$	$T_C = 100^\circ\text{C}$	BD896	-	-	-2	mA
		$I_E = 0$ $V_{CB} = -60\text{ V}$		BD898				
		$I_E = 0$ $V_{CB} = -80\text{ V}$		BD900				
		$I_E = 0$ $V_{CB} = -100\text{ V}$		BD902				
$I_{CEO}$	Collector Cutoff Current	$I_E = 0, V_{CE} = -30\text{ V}$	BD896	-	-	-0.5	mA	
		$I_E = 0, V_{CE} = -30\text{ V}$	BD898					
		$I_E = 0, V_{CE} = -40\text{ V}$	BD900					
		$I_E = 0, V_{CE} = -50\text{ V}$	BD902					
$I_{EBO}$	Emitter Cutoff Current	$V_{EB} = -5\text{ V}, I_C = 0$	BD896	-	-	-2	mA	
			BD898					
			BD900					
			BD902					
$V_{CEO}$	Collector-Emitter Breakdown Voltage (*)	$I_C = -100\text{ mA}, I_B = 0$	BD896	-45	-	-	V	
			BD898	-60	-	-		
			BD900	-80	-	-		
			BD902	-100	-	-		
$V_{CE(SAT)}$	Collector-Emitter saturation Voltage (*)	$I_C = -3\text{ A}, I_B = -12\text{ mA}$	BD896	-	-	-2.5	V	
			BD898					
			BD900					
			BD902					

## BD896 – BD898 – BD900 – BD902

### ELECTRICAL CHARACTERISTICS

TC=25°C unless otherwise noted

Symbol	Ratings			Min	Typ	Max	Unit
$V_{BE(on)}$	Base-Emitter Voltage (*)	$I_C = -3\text{ A}, V_{CE} = -3\text{ V}$	BD896	-	-	-2.5	V
			BD898				
			BD900				
			BD902				
$h_{FE}$	DC Current Gain (*)	$V_{CE} = -3.0\text{ V}$ $I_C = -3\text{ A}$	BD896	750	-	-	-
			BD898				
			BD900				
			BD902				
$V_{ECF}$	C-E Diode Forward Voltage	$I_E = -8\text{ A}$	BD896	-	-	-3.5	V
			BD898				
			BD900				
			BD902				

### SWITCHING TIMES

Symbol	Ratings	Test Condition(s)	Min	Typ	Max	Unit
$t_{on}$	turn-on time	$I_C = -3\text{ A}, V_{BE(off)} = 3.5\text{ V}$ $I_{Bon} = -I_{Boff} = -12\text{ mA}, R_L = 10\ \Omega$	-	1	-	$\mu\text{s}$
$t_{off}$	turn-off time		-	5	-	

(\*) Pulse Width  $\approx 300\ \mu\text{s}$ , Duty Cycle  $\angle 2.0\%$

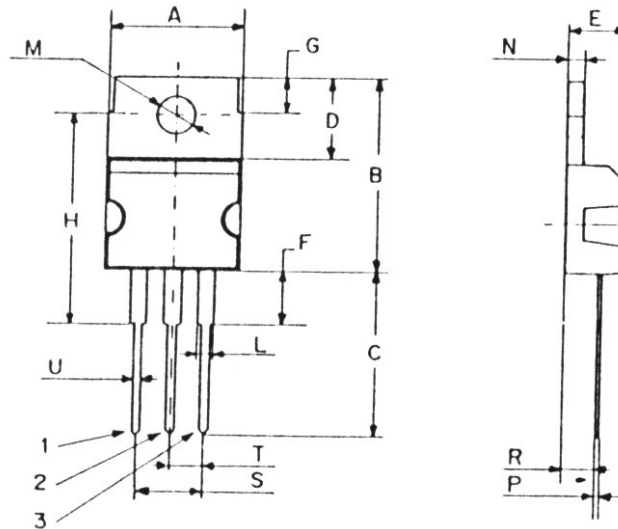
### THERMAL CHARACTERISTICS

Symbol	Ratings	Value	Unit
$R_{thJ-C}$	Thermal Resistance Junction To Case	1.79	$^{\circ}\text{C/W}$
$R_{thJ-A}$	Thermal Resistance Junction To Free Air	62.5	$^{\circ}\text{C/W}$

**BD896 – BD898 – BD900 – BD902**

**MECHANICAL DATA CASE TO-220**

DIMENSIONS (mm)		
	Min.	Max.
A	9,90	10,30
B	15,65	15,90
C	13,20	13,40
D	6,45	6,65
E	4,30	4,50
F	2,70	3,15
G	2,60	3,00
H	15,75	17,15
L	1,15	1,40
M	3,50	3,70
N	-	1,37
P	0,46	0,55
R	2,50	2,70
S	4,98	5,08
T	2,49	2,54
U	0,70	0,90



Pin 1 :	Base
Pin 2 :	Collector
Pin 3 :	Emitter
Package	Collector

Revised August 2012

Information furnished is believed to be accurate and reliable. However, Comset Semiconductors assumes no responsibility for the consequences of use of such information nor for any infringement of patents or other rights of third parties which may result from its use. Data are subject to change without notice. Comset Semiconductors makes no warranty, representation or guarantee regarding the suitability of its products for any particular purpose, nor does Comset Semiconductors assume any liability arising out of the application or use of any product and specifically disclaims any and all liability, including without limitation consequential or incidental damages. Comset Semiconductors' products are not authorized for use as critical components in life support devices or systems.