

SD103AW...SD103CW

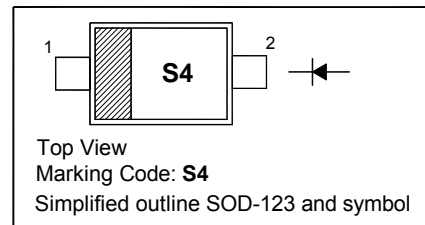
Surface Mount Schottky Barrier Diodes

Features

- Low forward voltage

PINNING

PIN	DESCRIPTION
1	Cathode
2	Anode

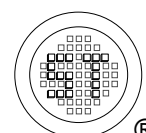


Absolute Maximum Ratings ($T_a = 25^\circ\text{C}$)

Parameter	Symbol	Value	Unit
Peak Repetitive Reverse Voltage	V_{RRM}	40 30 20	V
Reverse Voltage	V_R	40 30 20	V
Average Forward Rectified Current	$I_{F(AV)}$	350	mA
Non-Repetitive Peak Forward Surge Current at $t = 1$ s	I_{FSM}	2	A
Power Dissipation	P_{tot}	400	mW
Operating and Storage Temperature Range	T_j, T_{stg}	- 65 to + 125	$^\circ\text{C}$

Characteristics at $T_a = 25^\circ\text{C}$

Parameter	Symbol	Min.	Typ.	Max.	Unit
Reverse Breakdown Voltage at $I_R = 10 \mu\text{A}$	$V_{(BR)R}$	40 30 20	- - -	- - -	V
Forward Voltage at $I_F = 20$ mA at $I_F = 200$ mA	V_F	- -	- -	0.37 0.6	V
Reverse Leakage Current at $V_R = 30$ V at $V_R = 20$ V at $V_R = 10$ V	I_R	- - -	- - -	5 5 5	μA
Total Capacitance at $V_R = 0$ V, $f = 1$ MHz	C_T	-	30	-	pF
Reverse Recovery Time at $I_F = I_R = 200$ mA, $I_{rr} = 0.1 I_R$, $R_L = 100 \Omega$	t_{rr}	-	10	-	ns



SD103AW...SD103CW

Electrical Characteristic Curves

Fig 1. Reverse Characteristic Curve

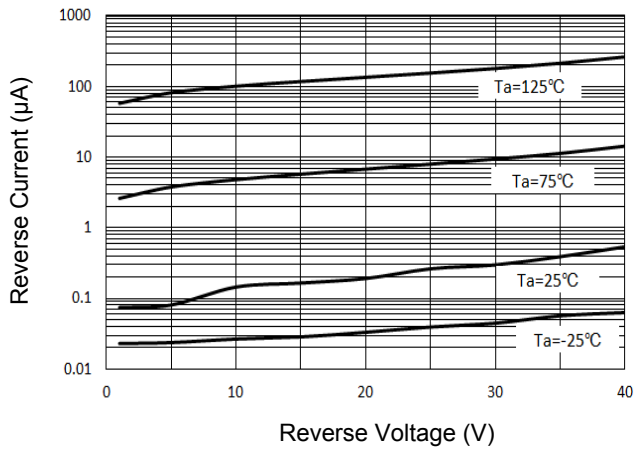


Fig 2. Forward Characteristic Curve

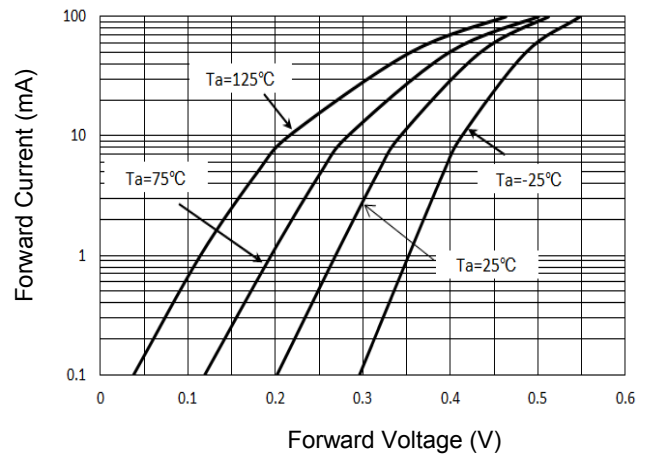
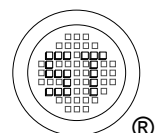
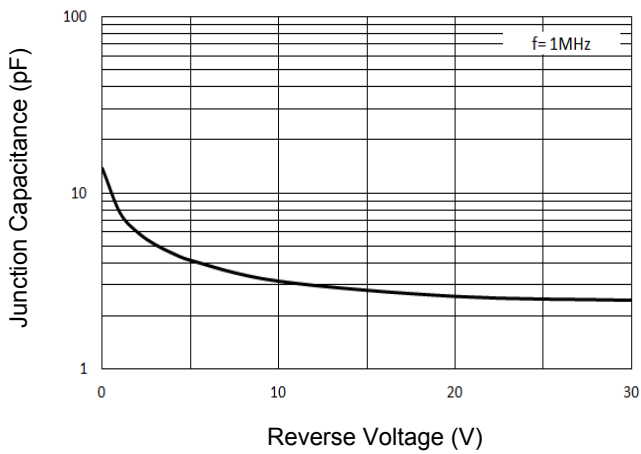


Fig 3. Junction Capacitance

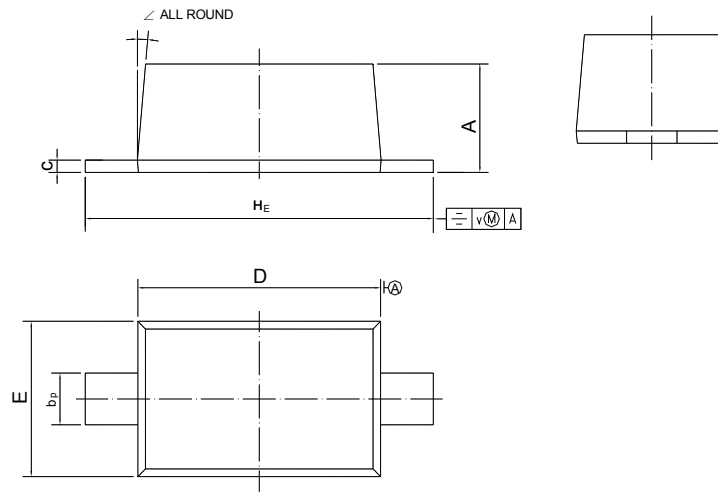


SD103AW...SD103CW

PACKAGE OUTLINE

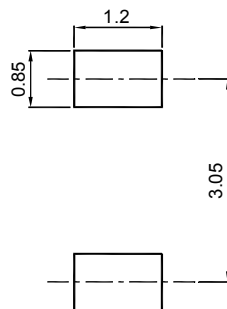
Plastic surface mounted package; 2 leads

SOD-123



UNIT	A	b _p	c	D	E	H _E	v	∠
mm	1.15 1.05	0.6 0.5	0.135 0.100	2.7 2.6	1.65 1.55	3.85 3.55	0.2	5°

Recommended Soldering Footprint



Packing information

Package	Tape Width (mm)	Pitch		Reel Size		Per Reel Packing Quantity
		mm	(inch)	mm	(inch)	
SOD-123	8	4 ± 0.1	0.157 ± 0.004	178	7	3,000

Marking information

" III " = Cathode line

" S4 " = Part No.

Font type: Arial

