

10A Avg.

100 Volts

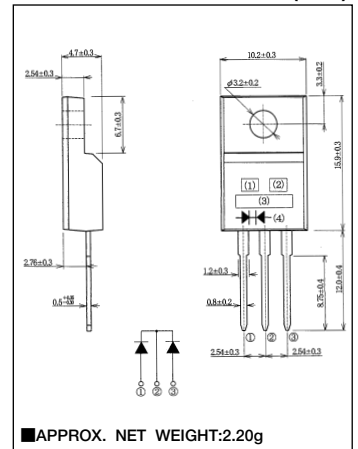
SBD

FCH10U10

■最大定格 Maximum Ratings

| Item   | Symbol     | Conditions  | Unit    |
|--|------------|---|---------|
| くり返しピーク逆電圧<br>Repetitive Peak Reverse Voltage    | $V_{RRM}$  | 100   | V       |
| 平均整流電流<br>Average Rectified Forward Current      | $I_O$      | 50Hz、正弦全波通電抵抗負荷<br>50Hz Full Sine Wave Resistive Load                   | 10 A    |
| 実効順電流<br>R.M.S. Forward Current                  | $I_F(RMS)$ | 11.1  | A       |
| サージ順電流<br>Surge Forward Current                  | $I_{FSM}$  | 120 50Hz正弦全波、1サイクル、非くり返し<br>50Hz Full Sine Wave, 1cycle, Non-repetitive | A       |
| 動作接合温度範囲<br>Operating Junction Temperature Range | $T_{jw}$   | -40~+150  | °C      |
| 保存温度範囲<br>Storage Temperature Range              | $T_{stg}$  | -40~+150  | °C      |
| 締付トルク<br>Mounting torque                         | $F_{tor}$  | 推奨値<br>Recommended Value  | 0.5 N·m |

■OUTLINE DRAWING(mm)



■電氣的・熱的特性 Electrical/Thermal Characteristics

| Item                           | Symbol        | Conditions  | Min. | Typ. | Max. | Unit |
|--------------------------------|---------------|---|------|------|------|------|
| ピーク逆電流<br>Peak Reverse Current | $I_{RM}$      | $T_j=25^{\circ}C, V_{RM}=V_{RRM}$ , 一素子あたり<br>Per Diode | —    | —    | 1    | mA   |
| ピーク順電圧<br>Peak Forward Voltage | $V_{FM}$      | $T_j=25^{\circ}C, I_{FM}=5A$ , 一素子あたり<br>Per Diode      | —    | —    | 0.85 | V    |
| 熱抵抗<br>Thermal Resistance      | $R_{th(j-c)}$ | 接合部・ケース間<br>Junction to Case                            | —    | —    | 3    | °C/W |
|                                | $R_{th(c-f)}$ | ケース・フィン間<br>Case to Fin                                 | —    | —    | 1.5  | °C/W |

■定格・特性曲線

