

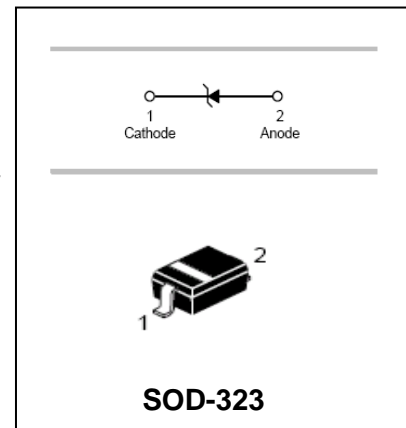
SMT-Type Zener Diode

MM3Z2V0S - MM3Z75S

FEATURES

- Large selection of zener voltages: 2V ~ 75V
- Tight voltage tolerance: $\pm 2\%$ for B-series
- Ultra low-profile package well suited for automated assembly
- MSL Class 1 compatible

HF



APPLICATIONS

- General voltage regulation
- Mobile & handheld systems

ORDERING INFORMATION

Part Number	Marking	Package
MM3Z2V0S - MM3Z75S	See Electrical Characteristics	SOD-323

MAXIMUM RATING (@ $T_A = 25^\circ\text{C}$ unless otherwise specified)

Parameter	Symbol	Value	Unit
Forward Voltage @ $I_F=10\text{mA}$	V_F	0.9	V
Power Dissipation	P_D	400	mW
Thermal Resistance (Junction-to-Ambient)	$R_{\theta JA}$	313	$^\circ\text{C}/\text{W}$
Junction Temperature Range	T_J	-55 ~ +150	$^\circ\text{C}$
Storage Temperature Range	T_{STG}	-65 ~ +150	$^\circ\text{C}$

Note: Device mounted on an FR4 Printed-Circuit Board (PCB), single-sided copper, tin-plated and standard footprint

SMT-Type Zener Diode

MM3Z2V0S - MM3Z75S

ELECTRICAL CHARACTERISTICS (@ T_A = 25°C unless otherwise specified)

Part Number	Marking Code	Zener Voltage V _Z (V)			@ I _{ZT} (mA)	Maximum Zener Impedance			Temperature Coefficient @ I _{ZT} T _C (mV/°C)		Maximum Reverse Current I _R (μA)	@ V _R (V)
		Min.	Typ.	Max.		Z _{ZT} (Ω) @ I _{ZT}	Z _{ZK} (Ω)	@ I _{ZK} (mA)	Min.	Max.		
MM3Z2V0S	V0S	1.96	2.00	2.04	5	100	1000	0.5	-3.5	0.0	120.000	0.5
MM3Z2V2S	V2S	2.16	2.20	2.24	5	100	1000	0.5	-3.5	0.0	120.000	0.7
MM3Z2V4S	V4S	2.35	2.40	2.45	5	94	564	1.0	-3.5	0.0	45.000	1.0
MM3Z2V7S	V7S	2.65	2.70	2.75	5	94	564	1.0	-3.5	0.0	18.000	1.0
MM3Z3V0S	3V0	2.94	3.00	3.06	5	89	564	1.0	-3.5	0.0	9.000	1.0
MM3Z3V3S	T5	3.23	3.30	3.37	5	89	564	1.0	-3.5	0.0	4.500	1.0
MM3Z3V6S	3V6	3.53	3.60	3.67	5	84	564	1.0	-3.5	0.0	4.500	1.0
MM3Z3V9S	T7	3.82	3.90	3.98	5	84	564	1.0	-3.5	0.0	2.700	1.0
MM3Z4V3S	T8	4.21	4.30	4.39	5	84	564	1.0	-3.5	0.0	2.700	1.0
MM3Z4V7S	T9	4.61	4.70	4.79	5	75	564	1.0	-3.5	0.2	2.700	2.0
MM3Z5V1S	TA	5.00	5.10	5.20	5	56	470	1.0	-2.7	1.2	1.800	2.0
MM3Z5V6S	TC	5.49	5.60	5.71	5	37	451	1.0	-2.0	2.5	0.900	2.0
MM3Z6V2S	TE	6.08	6.20	6.32	5	9	376	1.0	0.4	3.7	2.700	4.0
MM3Z6V8S	TF	6.66	6.80	6.94	5	14	141	1.0	1.2	4.5	1.800	4.0
MM3Z7V5S	TG	7.35	7.50	7.65	5	14	75	1.0	2.5	5.3	0.900	5.0
MM3Z8V2S	TH	8.04	8.20	8.36	5	14	75	1.0	3.2	6.2	0.630	5.0
MM3Z9V1S	TK	8.92	9.10	9.28	5	14	94	1.0	3.8	7.0	0.450	6.0
MM3Z10S	WB	9.80	10.00	10.20	5	18	141	1.0	4.5	8.0	0.180	7.0
MM3Z11S	11S	10.78	11.00	11.22	5	18	141	1.0	5.4	9.0	0.090	8.0
MM3Z12S	TN	11.76	12.00	12.24	5	23	141	1.0	6.0	10.0	0.090	8.0
MM3Z13S	13S	12.74	13.00	13.26	5	28	160	1.0	7.0	11.0	0.090	8.0
MM3Z15S	WF	14.70	15.00	15.30	5	28	188	1.0	9.2	13.0	0.045	10.5
MM3Z16S	TU	15.68	16.00	16.32	5	37	188	1.0	10.4	14.0	0.045	11.2
MM3Z18S	TW	17.64	18.00	18.36	5	42	212	1.0	12.4	16.0	0.045	12.6
MM3Z20S	20S	19.60	20.00	20.40	5	51	212	1.0	14.4	18.0	0.045	14.0
MM3Z22S	22S	21.56	22.00	22.44	5	51	235	1.0	16.4	20.0	0.045	15.4
MM3Z24S	24S	23.52	24.00	24.48	5	65	235	1.0	18.4	22.0	0.045	16.8
MM3Z27S	27S	26.46	27.00	27.54	2	75	282	0.5	21.4	25.3	0.045	18.9
MM3Z30S	30S	29.40	30.00	30.60	2	75	282	0.5	24.4	29.4	0.045	21.0
MM3Z33S	33S	32.34	33.00	33.66	2	75	306	0.5	27.4	33.4	0.045	23.0
MM3Z36S	36S	35.28	36.00	36.72	2	84	329	0.5	30.4	37.4	0.045	25.2
MM3Z39S	39S	38.22	39.00	39.78	2	122	329	0.5	33.4	41.2	0.045	27.3
MM3Z43S	43S	42.14	43.00	43.86	2	141	353	0.5	37.6	46.6	0.045	30.1
MM3Z47S	47S	46.06	47.00	47.94	2	160	353	0.5	42.0	51.8	0.045	33.0
MM3Z51S	51S	49.98	51.00	52.02	2	169	376	0.5	46.6	57.2	0.045	35.7
MM3Z56S	56S	54.88	56.00	57.12	2	200	400	0.5	52.2	63.8	0.045	39.2
MM3Z62S	62S	60.76	62.00	63.24	2	215	423	0.5	58.8	71.6	0.045	43.4
MM3Z68S	68S	66.64	68.00	69.36	2	240	447	0.5	65.6	79.8	0.045	47.6
MM3Z75S	75S	73.50	75.00	76.50	2	255	470	0.5	73.4	88.6	0.045	52.5

SMT-Type Zener Diode

MM3Z2V0S - MM3Z75S

TYPICAL CHARACTERISTICS (@ $T_A = 25^\circ\text{C}$ unless otherwise specified)

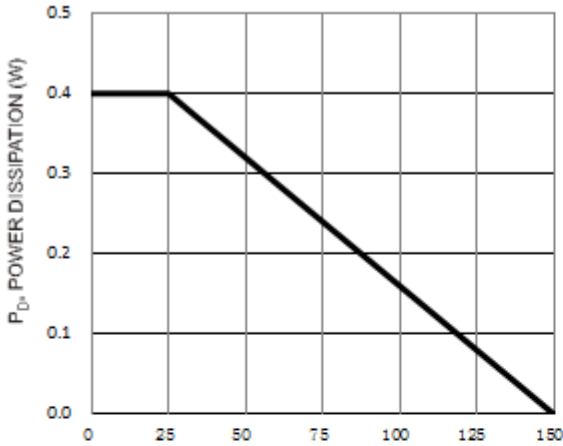


Fig. 1 Power Derating Curve

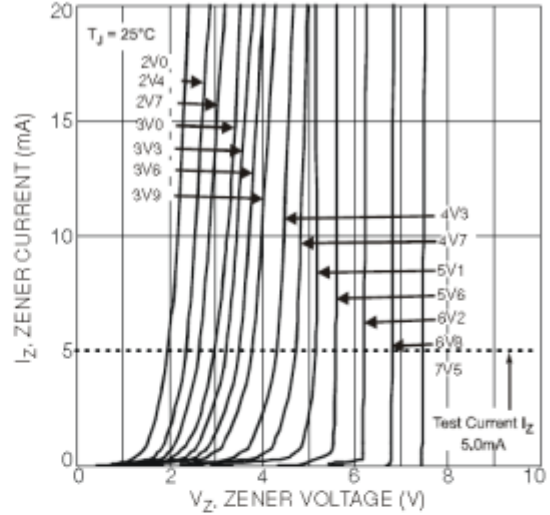


Fig. 2 Typical Zener Breakdown Characteristics

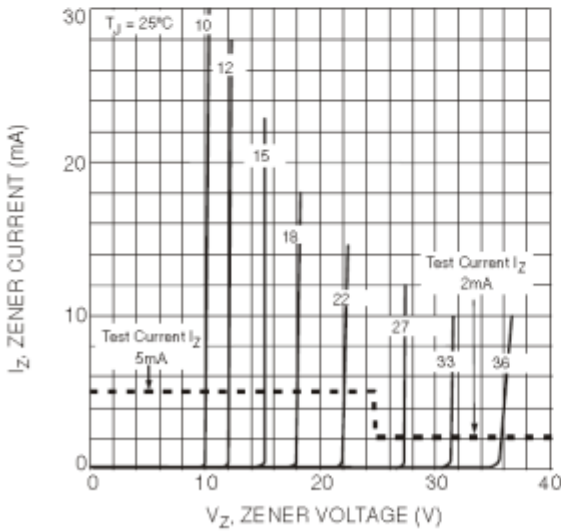


Fig. 3 Typical Zener Breakdown Characteristics

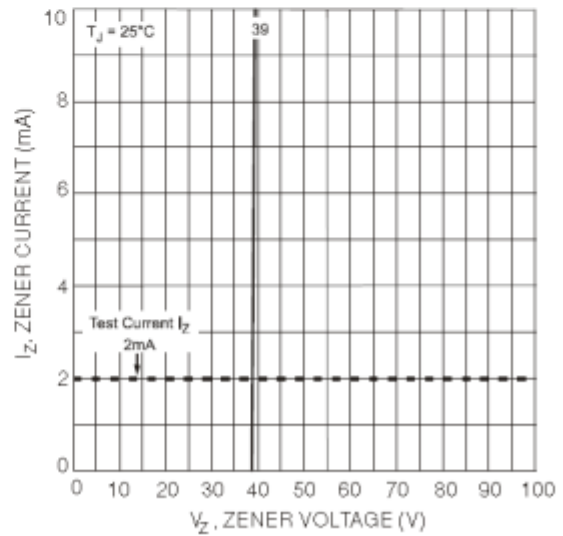


Fig. 4 Typical Zener Breakdown Characteristics

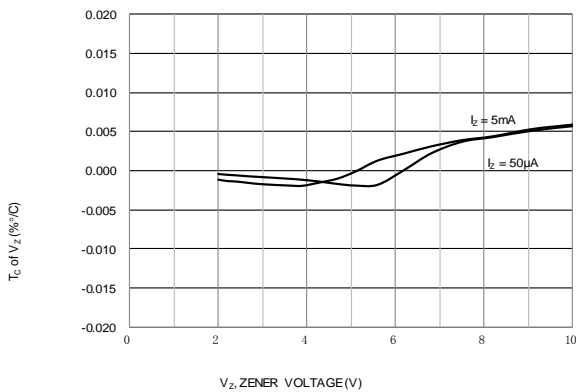


Fig. 5 Typical Temperature Coefficient of Zener Voltage

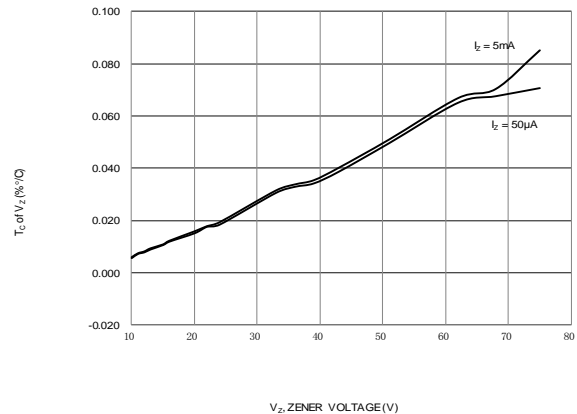


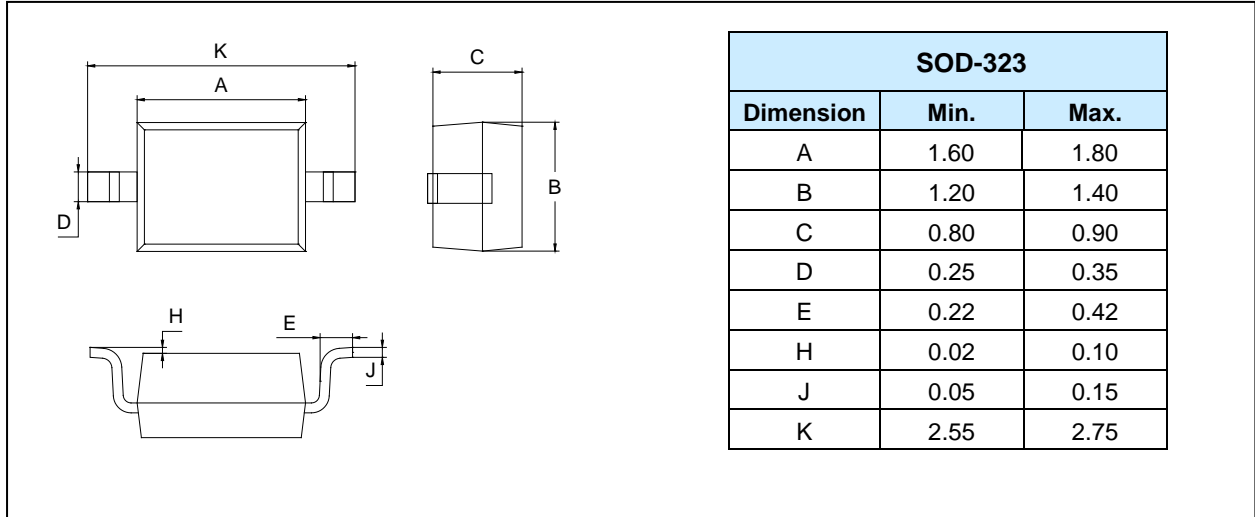
Fig. 6 Typical Temperature Coefficient of Zener Voltage

SMT-Type Zener Diode

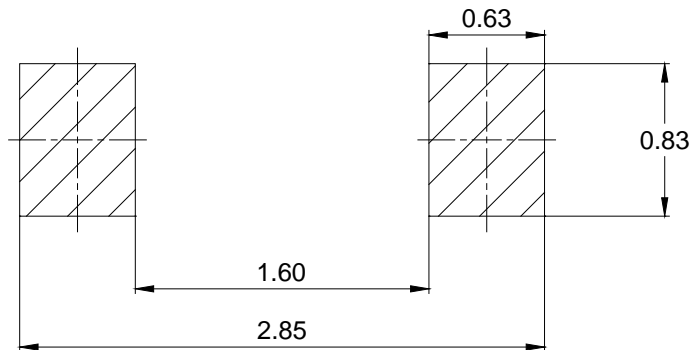
MM3Z2V0S - MM3Z75S

PACKAGE OUTLINE (Unit: mm)

Plastic surface mounted package



MOUNTING PAD LAYOUT (Unit: mm)



PACKAGE INFORMATION

Part Number	Package	Shipping Quantity
MM3Z2V0S - MM3Z75S	SOD-323	3000pcs / Tape & Reel

SMT-Type Zener Diode

MM3Z2V0S - MM3Z75S

IMPORTANT NOTICE

Changzhou Galaxy Century Microelectronics (GME) reserves the right to make changes without further notice to any product information (copyrighted) herein to make corrections, modifications, improvements, or other changes. GME does not assume any liability arising out of the application or use of any product described herein; neither does it convey any license under its patent rights, nor the rights of others.