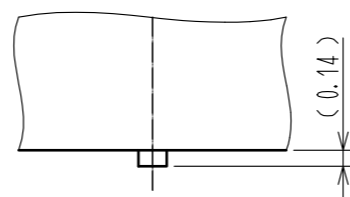
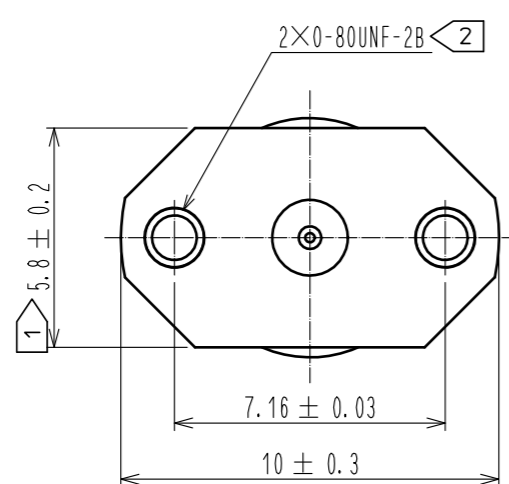
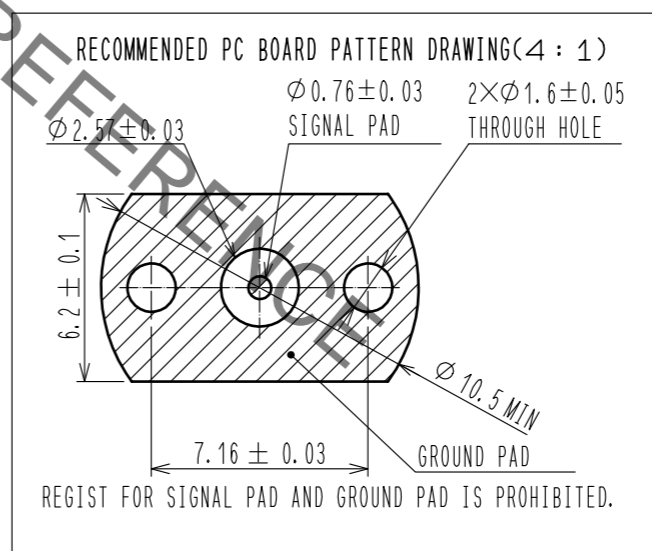
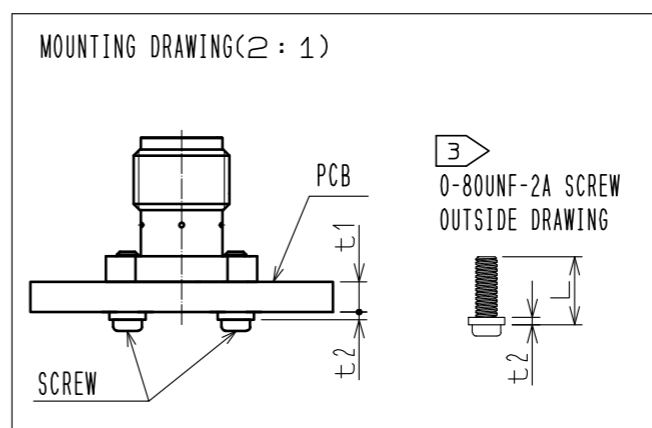
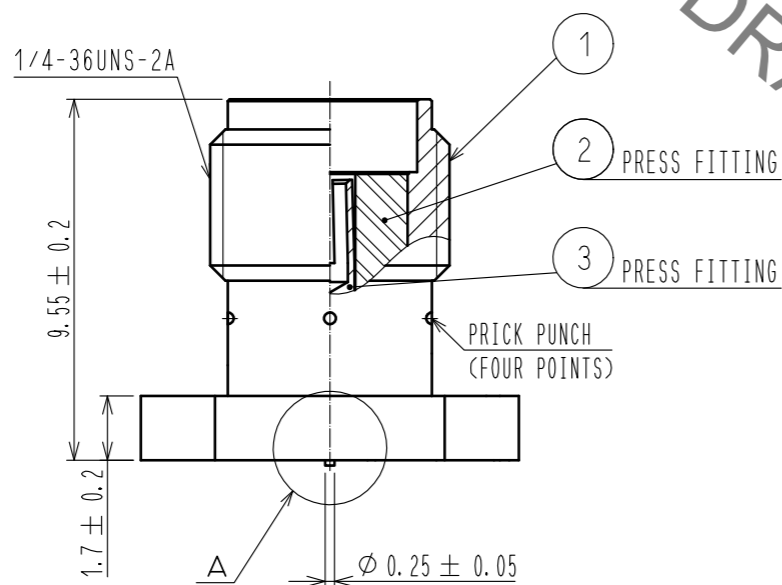
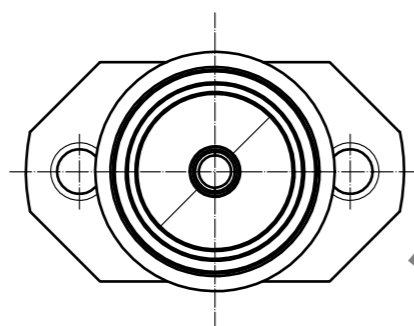


Unified screw thread type

A(10:1)



- NOTES
- 1 WHEN THE MATING CONNECTOR, PLEASE HOLD MILLING AREA OF 5.8 ± 0.2 WITH A WRENCH.
 - 2 0-80UNF-2B SCREW TIGHTENING TORQUE IS $0.09N \cdot m$. PLEASE TIGHTEN THE SCREWS EVENLY WHEN MOUNTING THE CONNECTORS TO ENSURE STABLE ELECTRICAL CONTACT.
 - 3 PLEASE USE A PCB MOUNTING SCREW OF THE LENGTH OF L(mm). THE LENGTH OF L(mm) IS PCB THICKNESS t_1 (mm) + SPRING WASHER THICKNESS t_2 (mm) + 2(mm). PLEASE USE A SCREW WITH SPRING WASHER.
 - 4. THIS CONNECTOR SHOULD BE USE FOR TEST PORT ONLY.



RoHS COMPLIANT

2	PTFE							
1	BRASS	GOLD PLATING	3	BERYLLIUM COPPER	GOLD PLATING			
NO.	MATERIAL	FINISH . REMARKS	NO.	MATERIAL	FINISH . REMARKS			
UNITS		SCALE	COUNT	DESCRIPTION OF REVISIONS		DESIGNED	CHECKED	DATE
mm		5 : 1	2	DIS-D-00003461		RO. YOKOYAMA	TO. KATAYAMA	18. 08. 31
HRS HIROSE ELECTRIC CO., LTD.		APPROVED : MH. YAMANE	12. 02. 10	DRAWING NO.		EDC3-339103-00		
		CHECKED : MH. TSUCHIDA	12. 02. 10	PART NO.		HRMCG-300-468B-1		
		DESIGNED : RO. YOKOYAMA	12. 02. 10	CODE NO.		CL323-0924-8-00		
		DRAWN : RO. YOKOYAMA	12. 02. 10					

In case of consideration for using Automotive equipment / device which demand high reliability, kindly contact our sales window correspondents.