

REVISIONS				
ECO	REV	DESCRIPTION	DATE	APPROVED
473	A	PRODUCTION RELEASE	11/9/95	RBD
687	B	CHANGED CORE MATERIAL	7/25/97	RBD
730	C	CHG:NOTE 1.1 & 2.1 WAS:L=250 UH	12/18/97	RBD
---	C1	CHG: FR: 1.72 MAX TO: 1.75 MAX	3/16/98	LGK
1023	D	CHG: NOTES 2.1, AND 3.3 PER ECO	05/15/00	RBD
---	D1	ADD PERMACORE 87-9040-26	11/10/00	RBD

**PROPRIETARY DATA:**  
 This document and information contained  
 may not be reproduced, used or disclosed  
 without prior written permission of WESTCOR  
 a division of VICOR Corporation.

NOTES:UNLESS OTHERWISE SPECIFIED

1. MATERIALS: UL RECOGNIZED 94V-2  
 FLAMMABILITY RATING CLASS B (130°C)  
 REQUIRED.

1.1 CORE: TOROID,  $\mu = 5000$

MAGNETICS: ZJ-43806-TC OR  
 PERMACOR: 87-9040-26

1.2 WIRE: U.L. RECOGNIZED 130°C RATING  
 MAGNET WIRE

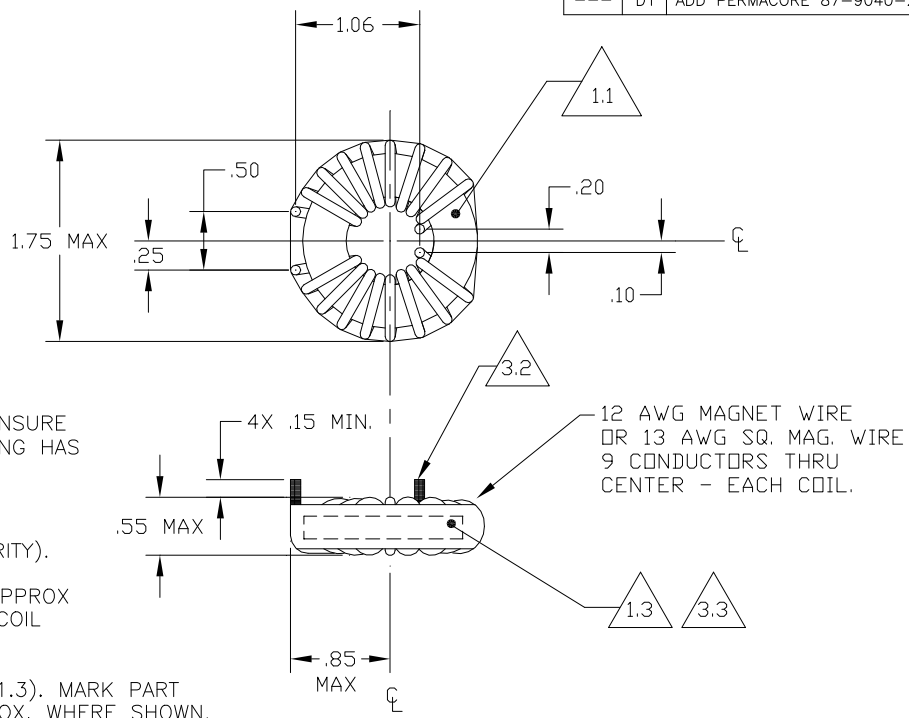
1.3 OUTER WRAP: 3M #11 OR #69  
 OR PERMASIL #213 OR 286

2. SPECIFICATIONS:



- 2.1 = 260  $\mu$ H MIN/COIL (1KHZ, <1Vrms)
- 2.2 DCR = 2 mOHMS MAX/COIL
- 2.3 POWER LOSS = 6.4 W MAX @ 40A/COIL
- 2.4 HI-POT TEST COIL TO COIL, 250VDC TO INSURE  
 INTEGRITY OF WINDING INSULATION/COVERING HAS  
 NOT BEEN BREACHED.

3. CONSTRUCTION:

- 3.1 WIND COILS EVENLY SPACED (NOTE POLARITY).
- 3.2 2X REMOVE INSULATION AND TIN LEADS APPROX  
 FLUSH WITH THE CORE AS SHOWN. (I.E. COIL  
 MUST REST FLAT ON PCB).
- 3.3 WRAP INDUCTOR WITH TAPE, (PER NOTE 1.3). MARK PART  
 NUMBER AND REVISION IN (BLACK) APPROX. WHERE SHOWN,  
 USING A PERMANENT MARKING METHOD.



12 AWG MAGNET WIRE  
 OR 13 AWG SQ. MAG. WIRE  
 9 CONDUCTORS THRU  
 CENTER - EACH COIL.

		UNLESS OTHERWISE SPECIFIED DIMENSIONS ARE IN INCHES TOLERANCES ARE: FRACTIONS DECIMALS ANGLES $\pm$ --- .XX $\pm$ .05 $\pm$ 3' .XXX $\pm$ .020	CONTRACT NO. ---		 WESTCOR a division of  VICOR Corp.	
		MATERIAL SEE NOTES	APPROVALS			
---	SEE MIS	FINISH ---	DRAWN B.STOVER	08/04/94		IND COMMON MODE 350 $\mu$ H 40A
NEXT ASSY	USED ON		CHECKED H.A. POWERS	11/06/95		
APPLICATION		DO NOT SCALE DRAWING	APPROVED R.B.DRABING	1/13/95		SIZE B
			DESIGNED R.B. DRABING	8-4-94		CAGE CODE ---
			SCALE NTS		FILENAME: 36-00029-01	DWG NO. 36-00029-01
			SHEET 1 OF 1		REV D1	