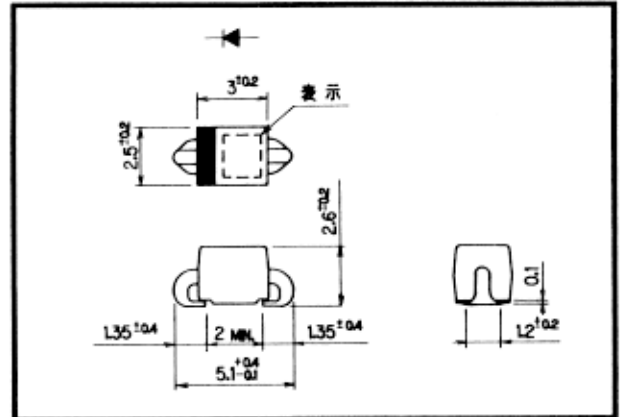


SC802-04 (1.0A)



SCHOTTKY BARRIER DIODE

Outline Drawing



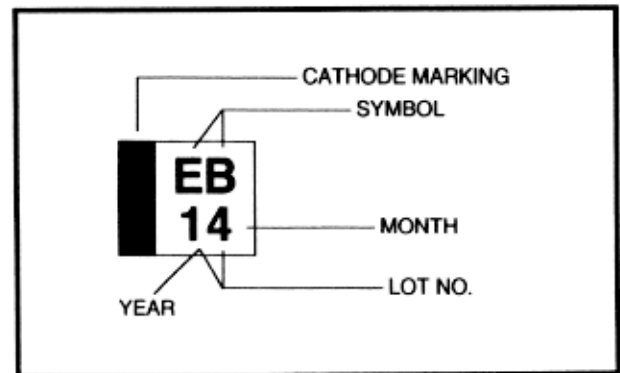
Features

- Surface mount device
- Low V_F
- Super high speed switching
- High reliability by planer design

Applications

- High speed power switching

Marking



Maximum Ratings & Characteristics

- Absolute Maximum Ratings

Items	Symbols	Conditions	Ratings	Units
Repetative Peak Reverse Voltage	V_{RRM}		45	V
Non-Repetative Peak Reverse Voltage	V_{RSM}	$t_w = 500ns, \text{duty } 1/40$	48	V
Average Output Current	I_O	$T_J = 115^\circ\text{C}, \text{Resistive Load}$	1.0*	A
Surge Current	I_{FSM}	Sine Wave, 10ms	40	A
Operating Junction Temperature	T_J		-40 to +125	$^\circ\text{C}$
Storage Temperature	T_{stg}		-40 to +125	$^\circ\text{C}$

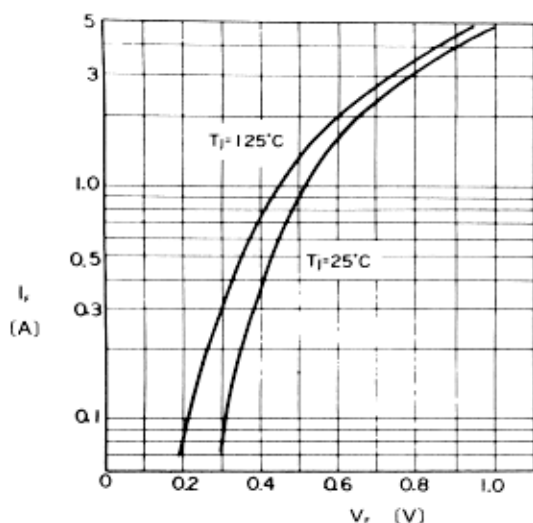
*Mounted to glass fabric base epoxy resin printed circuits.

- Electrical Characteristics ($T_a = 25^\circ\text{C}$ Unless otherwise specified)

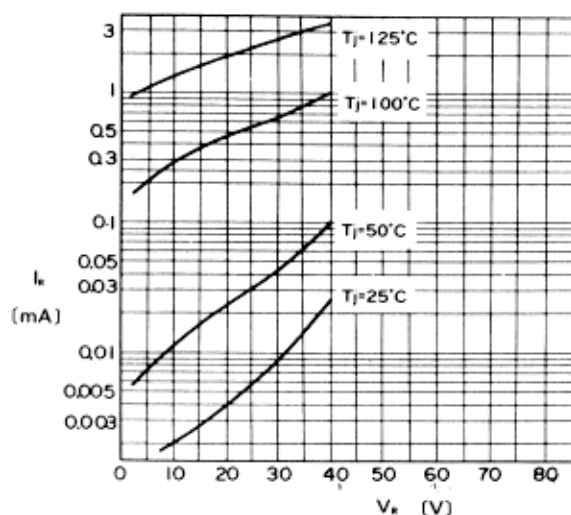
Items	Symbols	Conditions	Ratings	Units
Forward Voltage Drop	V_F	$I_F = 1A$	0.55	V
Reverse Current	I_R	$V_R = V_{RRM}$	2.0	mA
Thermal Resistance	$R_{\theta(j-l)}$	Junction to Lead	15*	$^\circ\text{C/W}$



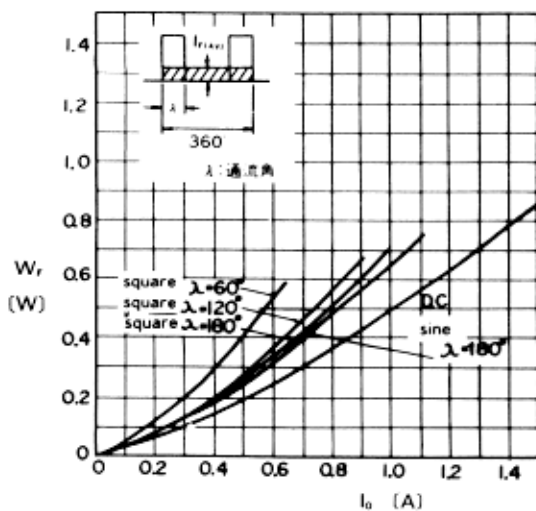
SC802-04 (1.0A)



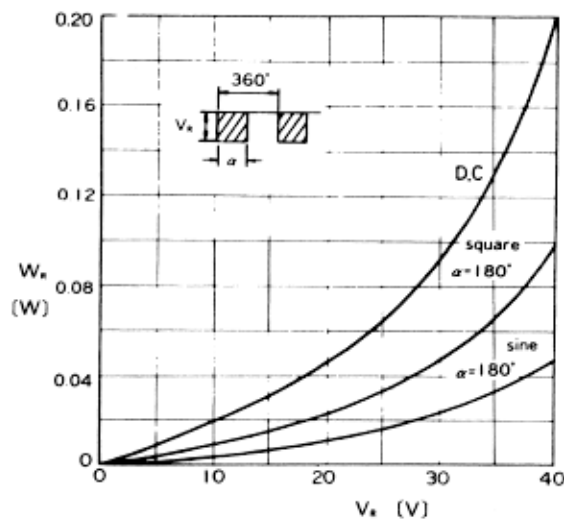
Forward Characteristics



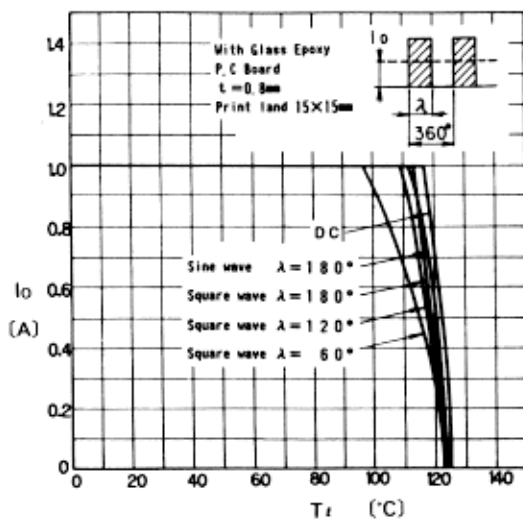
Reverse Characteristics



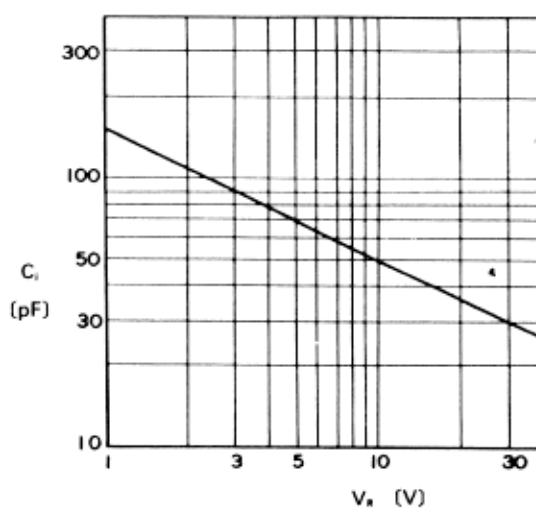
Forward Power Dissipation



Reverse Power Dissipation



Current Derating ($I_o - T_f$)



Junction Capacitance Characteristics

This datasheet has been downloaded from:

www.DatasheetCatalog.com

Datasheets for electronic components.