



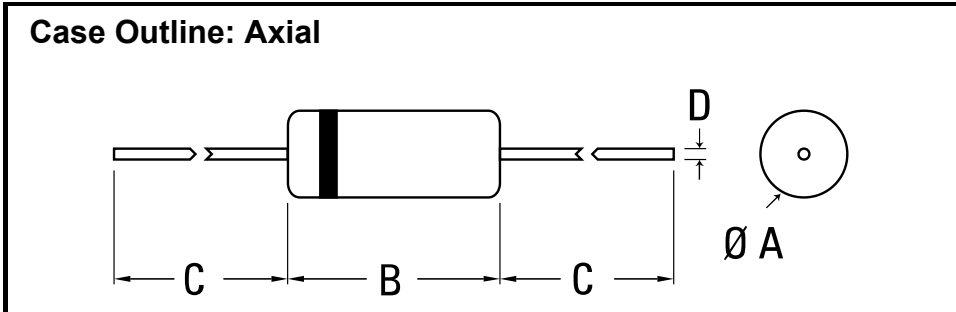


**Solid State Devices, Inc.**

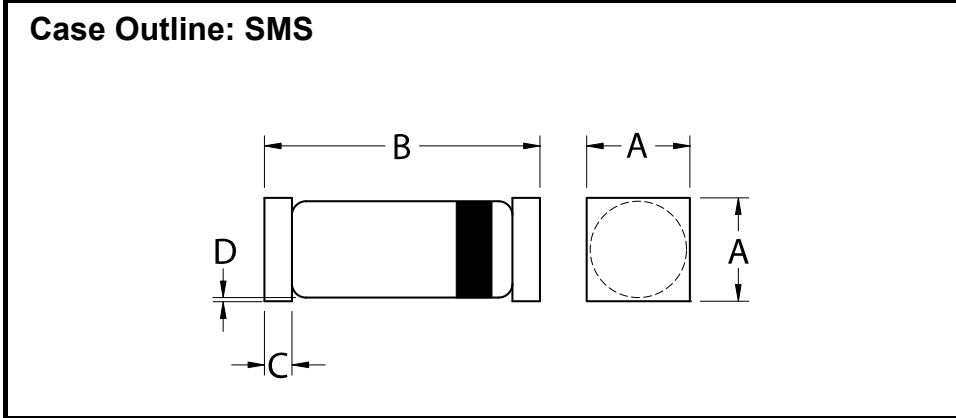
14701 Firestone Blvd \* La Mirada, CA 90638  
 Phone: (562) 404-4474 \* Fax: (562) 404-1773  
 ssdi@ssdi-power.com \* www.ssdi-power.com

**SPD0801 – SPD1001SMS  
 and  
 SPD0801SMS - SPD1001SMS**

<b>ELECTRICAL CHARACTERISTICS</b>	<b>Symbol</b>	<b>Max</b>	<b>Unit</b>
<b>Instantaneous Forward Voltage Drop</b> ( $I_F = 0.5A_{DC}$ , $T_A = 25^\circ C$ , 300 $\mu s$ Pulse) ( $I_F = 1A_{DC}$ , $T_A = 25^\circ C$ , 300 $\mu s$ Pulse)	$V_F$	0.75 0.95	<b>Vdc</b>
<b>Instantaneous Forward Voltage Drop</b> ( $I_F = 1A_{DC}$ , $T_A = -55^\circ C$ , 300 $\mu s$ Pulse)	$V_F$	1.0	<b>Vdc</b>
<b>Reverse Leakage Current</b> (Rated $V_R$ , $T_A = 25^\circ C$ , 300 $\mu s$ minimum Pulse)	$I_R$	200	<b><math>\mu A</math></b>
<b>Reverse Leakage Current</b> (Rated $V_R$ , $T_A = 100^\circ C$ , 300 $\mu s$ minimum Pulse)	$I_R$	10	<b>mA</b>
<b>Junction Capacitance</b> ( $V_R = 10 V_{DC}$ , $T_A = 25^\circ C$ , $f = 1 MHz$ )	$C_J$	30	<b>pF</b>



<b>DIMENSIONS</b>		
DIM	MIN	MAX
A	.080"	.107"
B	.160"	.205"
C	1.00"	---
D	.028"	.032"



<b>DIMENSIONS</b>		
DIM	MIN	MAX
A	.125"	.135"
B	.180"	.235"
C	.022"	.028"
D	.090"	.110"