

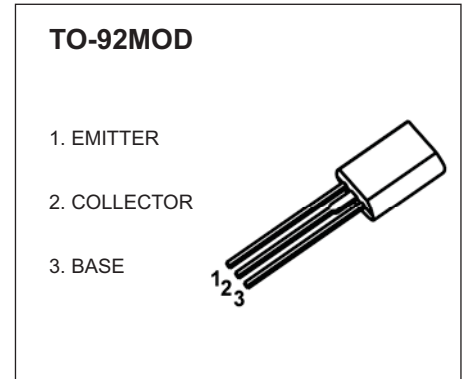


JSCJ TO-92MOD Plastic-Encapsulate Transistors

2SB560 TRANSISTOR (PNP)

FEATURES

- High Reverse Voltage
- Crw Saturation Voltage
- Suitable Universal AF Power Amplifier Use

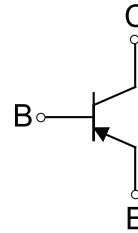


MARKING



B560=Device code
Solid dot = Green mdding compound device,
if none, the normal device
XXX=Code

Equivalent Circuit



ORDERING INFORMATION

Part Number	Package	Packing Method	Pack Quantity
2SB560	TO-92	Bulk	500pcs/Bag
2SB560-TA	TO-92	Tape	2000pcs/Bo3

MAXIMUM RATINGS (T_a=25°C unless otherwise noted)

Symbol	Parameter	Value	Unit
V _{CBO}	Collector-Base Voltage	-100	V
V _{CEO}	Collector-Emitter Voltage	-80	V
V _{EBO}	Emitter-Base Voltage	-5	V
I _C	Collector Current -Continuous	-0.7	A
P _D	Collector Power Dissipation	900	mW
R _{θJA}	Thermal Resistance from Junction to Ambient	139	°C /W
T _J , T _{stg}	Operation Junction and Storage Temperature Range	-55~+150	°C

ELECTRICAL CHARACTERISTICS

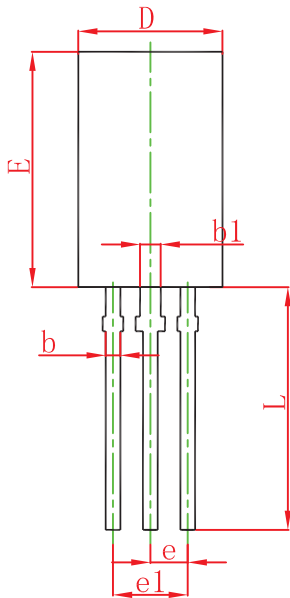
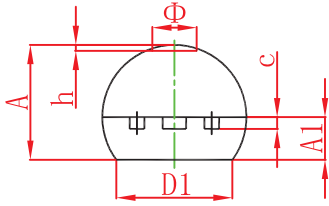
$T_a=25^\circ\text{C}$ unless otherwise specified

Parameter	Symbol	Test conditions	Min	Typ	Max	Unit
Collector-base breakdown voltage	$V_{(BR)CBO}$	$I_C = -10\ \mu\text{A}, I_E = 0$	-100			V
Collector-emitter breakdown voltage	$V_{(BR)CEO}$	$I_C = -1\ \text{mA}, I_B = 0$	-80			V
Emitter-base breakdown voltage	$V_{(BR)EBO}$	$I_E = -10\ \mu\text{A}, I_C = 0$	-5			V
Collector cut-off current	I_{CBO}	$V_{CB} = -20\ \text{V}, I_E = 0$			-1	μA
Collector cut-off current	I_{EBO}	$V_{EB} = -4\ \text{V}, I_B = 0$			-1	μA
DC current gain	$h_{FE(1)}$	$V_{CE} = -5\ \text{V}, I_C = -50\ \text{mA}$	60		560	
	$h_{FE(2)}$	$V_{CE} = -5\ \text{V}, I_C = -500\ \text{mA}$	30			
Collector-emitter saturation voltage	$V_{CE(sat)}$	$I_C = -500\ \text{mA}, I_B = -50\ \text{mA}$		-0.3	-0.8	V
Base-emitter saturation voltage	$V_{BE(sat)}$	$I_C = -500\ \text{mA}, I_B = -50\ \text{mA}$		-0.85	-1.2	V
Transition frequency	f_T	$V_{CE} = -10\ \text{V}, I_C = -50\ \text{mA}$		100		MHz
Out capacitance	Cob	$V_{CB} = -10\ \text{V}, f = 1\ \text{MHz}$		15		pF

CLASSIFICATION OF $h_{FE(1)}$

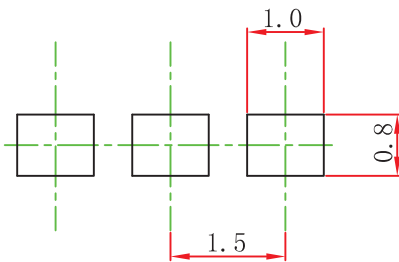
Rank	D	E	F	G
Range	60 - 120	100 - 200	160 - 320	280 - 560

TO-92MOD Package Outline Dimensions



Symbol	Dimensions In Millimeters		Dimensions In Inches	
	Min.	Max.	Min.	Max.
A	4.800	5.000	0.189	0.197
A1	1.730	2.030	0.068	0.080
b	0.440	0.600	0.017	0.024
b1	0.940	1.100	0.037	0.043
c	0.350	0.450	0.014	0.018
D	5.900	6.100	0.232	0.240
D1	4.000		0.157	
E	8.500	8.700	0.335	0.343
e	1.500 TYP.		0.059 TYP.	
e1	2.900	3.100	0.114	0.122
L	13.800	14.200	0.543	0.559
Φ		1.600		0.063
h	0.000	0.380	0.000	0.015

TO-92MOD Suggested Pad Layout



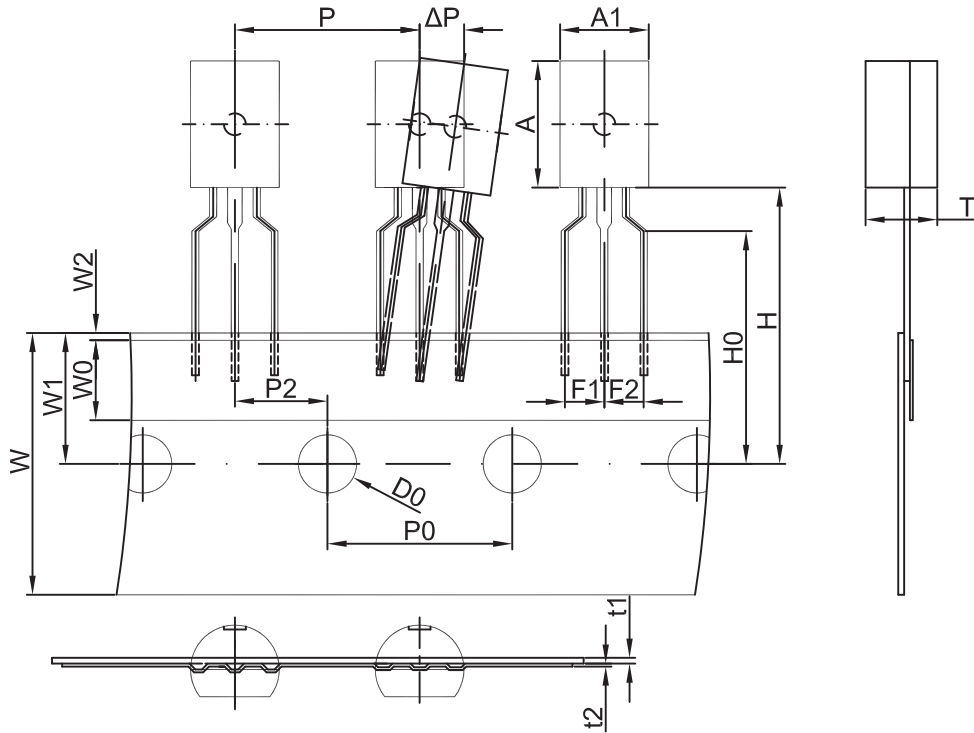
Note:

1. Controlling dimension: in millimeters.
2. General tolerance: ± 0.05 mm.
3. The pad layout is for reference purposes only.

NOTICE

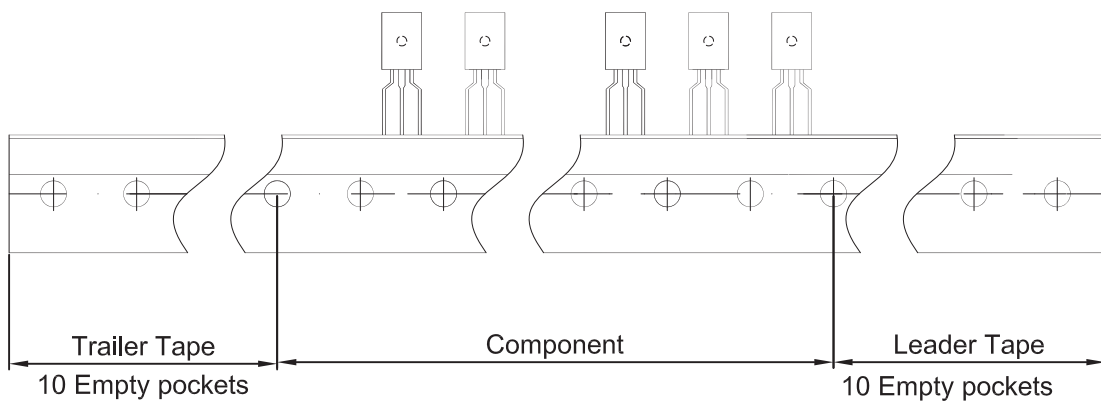
JSCJ reserves the right to make modifications, enhancements, improvements, corrections or other changes without further notice to any product herein. JSCJ does not assume any liability arising out of the application or use of any product described herein.

TO-92MOD PACKAGE TAPING DIMENSION



Dimensions are in millimeter

A1	A	T	P	P0	P2	F1	F2	W
6.0	8.6	4.9	12.7	12.7	6.35	2.5	2.5	18.0
W0	W1	W2	H	H0	D0	t1	t2	ΔP
6.0	9.0	1.0	19.0	16.0	4.0	0.4	0.2	0



Package	Box	Box Size(mm)	Carton	Carton Size(mm)
TO-92MOD	2000 pcs	333×245×43	20,000 pcs	573×404×266