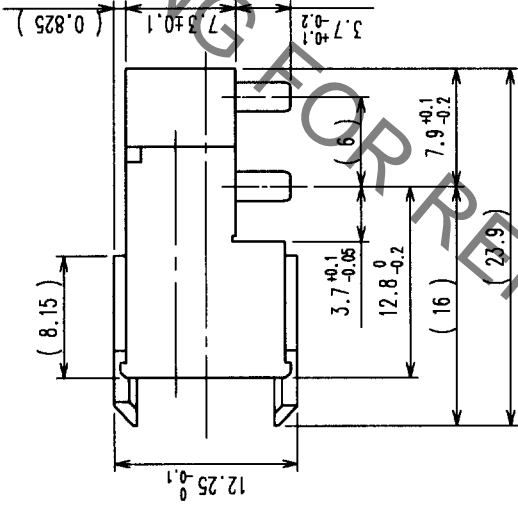
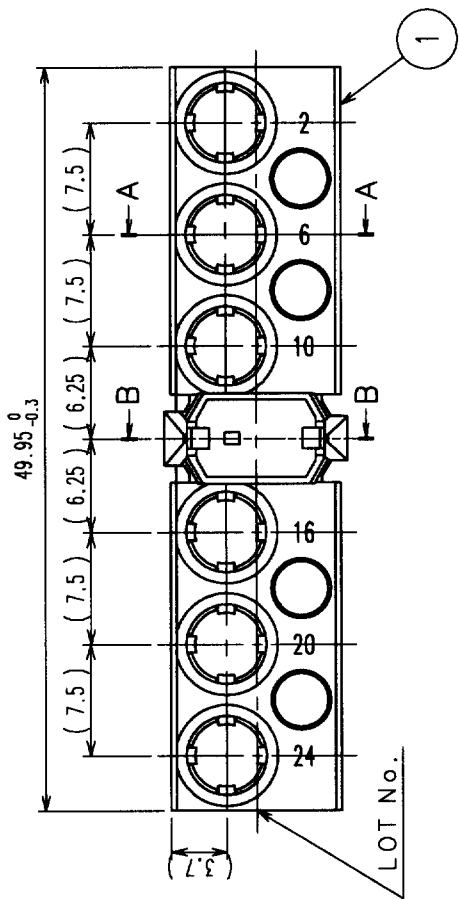
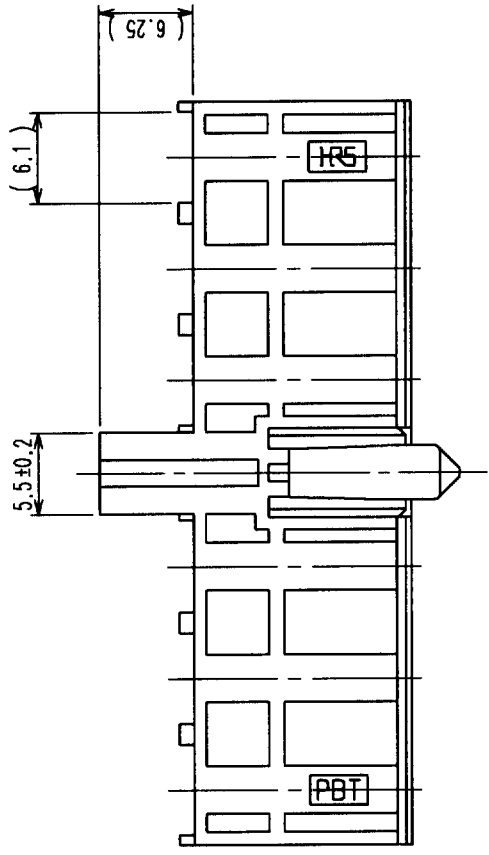


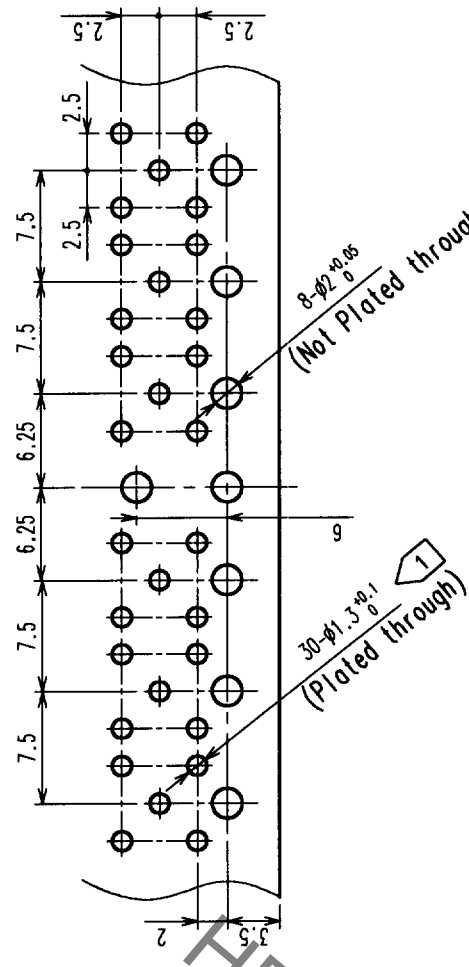
Aug.1.2022 Copyright 2022 HIROSE ELECTRIC CO., LTD. All Rights Reserved.
 In case of consideration for using Automotive equipment / device which demand high reliability, kindly contact our sales window correspondents.

COUNT	DESCRIPTION OF REVISIONS	BY	CHGD	DATE	COUNT	DESCRIPTION OF REVISIONS	BY	CHGD	DATE



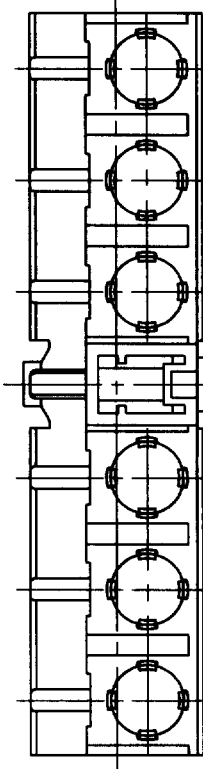
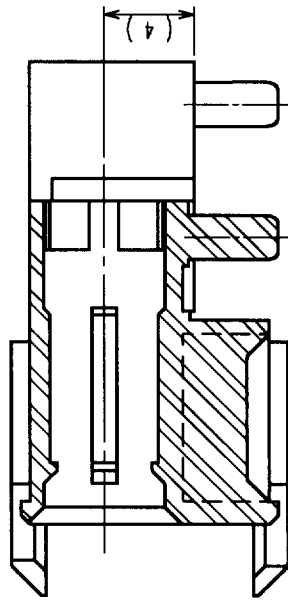
RECOMMENDED PC BOARD PATTERN(MOUNTING SIDE)

THE DIMENSIONAL TOLERANCE OF EACH HOLE POSITION TO BE ±0.05.



NOTE 1 USE 30-φ1.3 HOLE IN CASE OF POS1M-LPR-PC-1A MATED.

A-A (3:1)



TO	RF		
----	----	--	--

NO.	PBT	MATERIAL	FINISH, REMARKS	NO.	MATERIAL	FINISH, REMARKS
1	(DEEP BROWN)JUL94V-0					

CODE NO. (OLD)	DRAWN	DESIGNED	CHECKED	APPROVED	RELEASED

