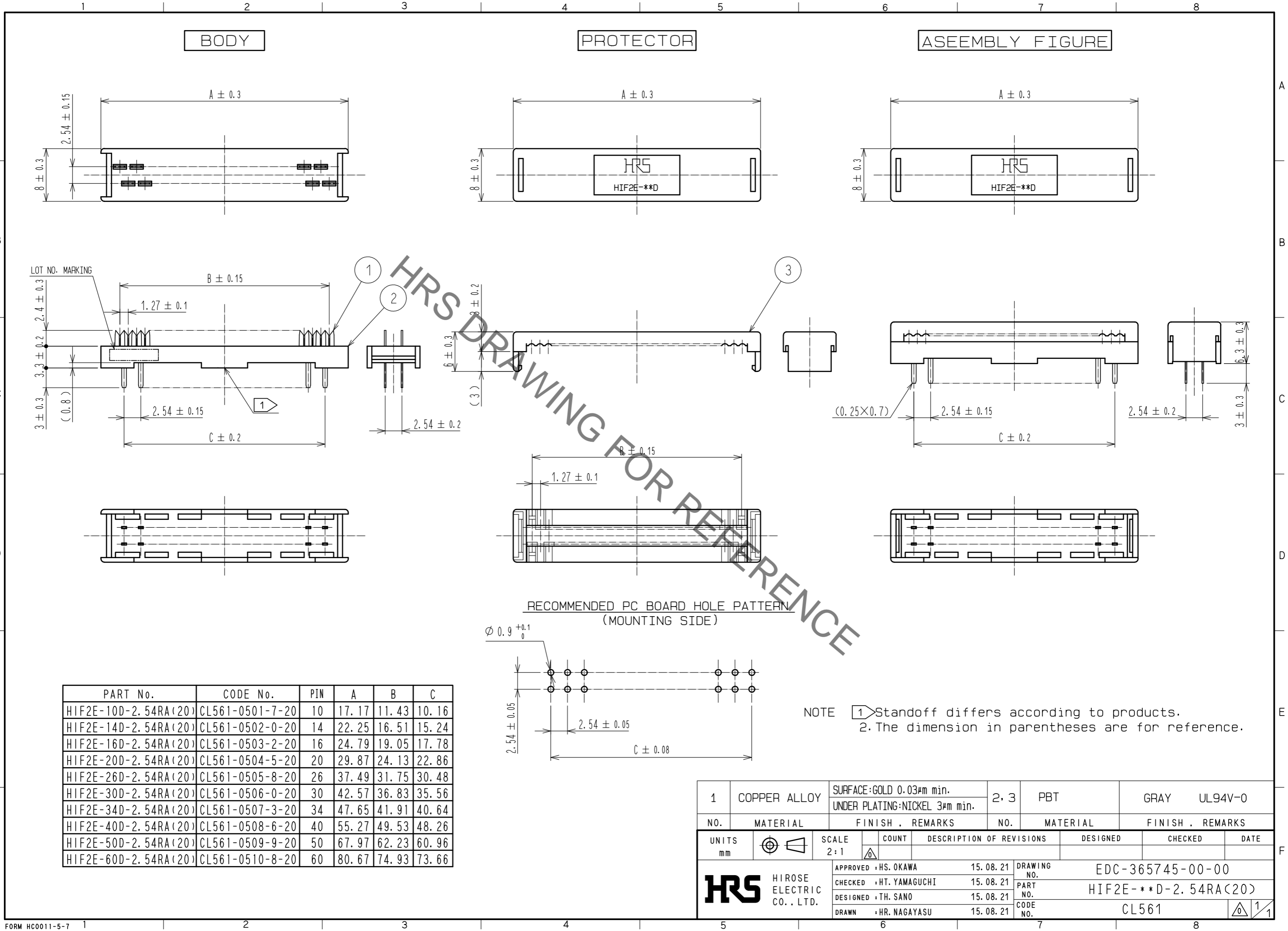


Aug.1.2022 Copyright 2022 HIROSE ELECTRIC CO., LTD. All Rights Reserved.
In case of consideration for using Automotive equipment / device which demand high reliability, kindly contact our sales window correspondents.



HRS DRAWING FOR REFERENCE

PART No.	CODE No.	PIN	A	B	C
HIF2E-10D-2.54RA(20)	CL561-0501-7-20	10	17.17	11.43	10.16
HIF2E-14D-2.54RA(20)	CL561-0502-0-20	14	22.25	16.51	15.24
HIF2E-16D-2.54RA(20)	CL561-0503-2-20	16	24.79	19.05	17.78
HIF2E-20D-2.54RA(20)	CL561-0504-5-20	20	29.87	24.13	22.86
HIF2E-26D-2.54RA(20)	CL561-0505-8-20	26	37.49	31.75	30.48
HIF2E-30D-2.54RA(20)	CL561-0506-0-20	30	42.57	36.83	35.56
HIF2E-34D-2.54RA(20)	CL561-0507-3-20	34	47.65	41.91	40.64
HIF2E-40D-2.54RA(20)	CL561-0508-6-20	40	55.27	49.53	48.26
HIF2E-50D-2.54RA(20)	CL561-0509-9-20	50	67.97	62.23	60.96
HIF2E-60D-2.54RA(20)	CL561-0510-8-20	60	80.67	74.93	73.66

NOTE 1 Standoff differs according to products.
2. The dimension in parentheses are for reference.

1	COPPER ALLOY	SURFACE:GOLD 0.03µm min. UNDER PLATING:NICKEL 3µm min.	2, 3	PBT	GRAY	UL94V-0			
NO.	MATERIAL	FINISH . REMARKS	NO.	MATERIAL	FINISH . REMARKS				
UNITS mm		SCALE 2:1	COUNT 	DESCRIPTION OF REVISIONS			DESIGNED	CHECKED	DATE
HRS HIROSE ELECTRIC CO., LTD.		APPROVED : HS. OKAWA	15.08.21	DRAWING NO. EDC-365745-00-00					
		CHECKED : HT. YAMAGUCHI	15.08.21	PART NO. HIF2E-**D-2.54RA(20)					
		DESIGNED : TH. SANO	15.08.21	CODE NO. CL561					
		DRAWN : HR. NAGAYASU	15.08.21						