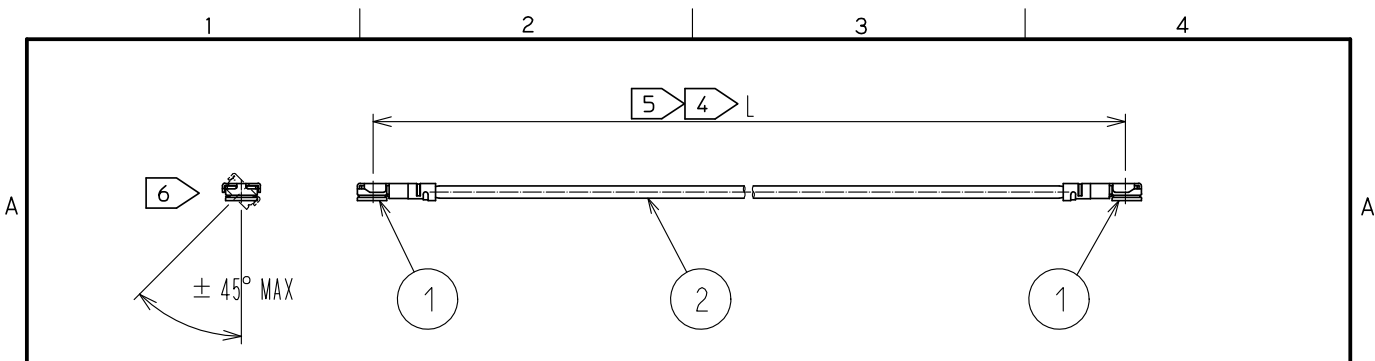


Jul.1.2022 Copyright 2022 HIROSE ELECTRIC CO., LTD. All Rights Reserved.
 In case of consideration for using Automotive equipment / device which demand high reliability, kindly contact our sales window correspondents.



Part No.	Cable color
~044*1TS~	WHITE
~044*2TS~	BLACK

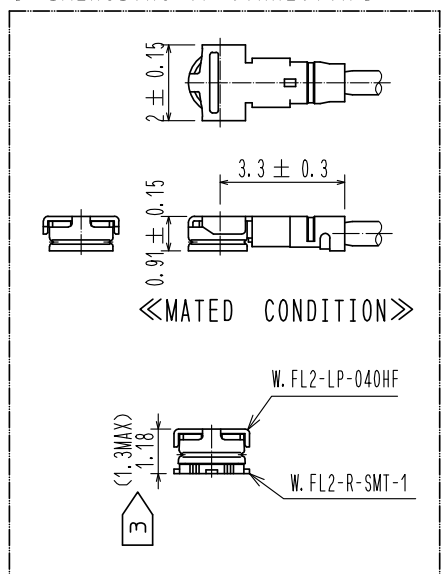
NOTE 1. Please place an order as the assembled product.

- 2. There is no compatibility between W.FL series and W.FL2 series.
- 3. The drawing shows mated connector height only.
- 4. We indicate the length of the harness on the last of product name, "L" part.
- 5. Tolerance for [L]

Length L [mm]	Tolerance [mm]
35 ≤ L ≤ 200	±4
200 < L ≤ 500	±8
500 < L ≤ 1000	±12
1000 < L	±1.5%

- 6. Connector rotation angle is within ±45 degree from the above image. For long length in the case of L>150, the angle is optional.
- 7. Specifications are subject to change without notice.

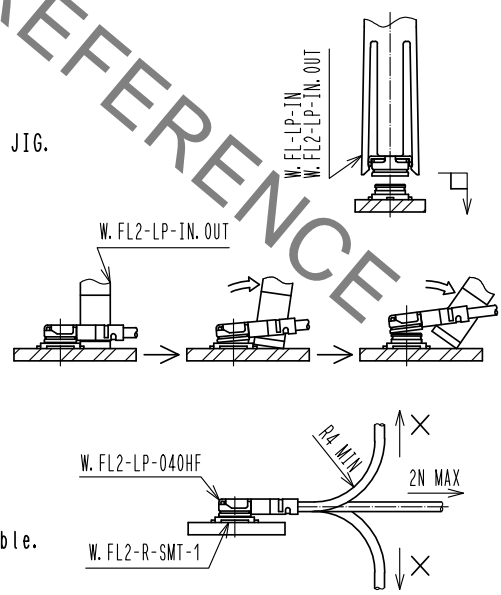
【 DIMENSIONS OF CONNECTOR 】



【 PRECAUTIONS FOR HANDLING 】

◆ Connector insertion and extraction

- a. Insert the connector as perpendicularly to the mating surface as possible with aligning the mating axes of both connectors by specialised insertion JIG.
 Part No. :W.FL-LP-IN<CL331-0323-2> or W.FL2-LP-IN.OUT<CL331-0321-7>
 Do not excessively slant the connectors when inserting.
- b. Connector shall be extracted by specialised extraction JIG.
 Part No. :W.FL2-LP-IN.OUT
 Never hold the cable when extracting the cable because it damages the connector.



- ◆ Allowable loads on the cable after the connectors are mated.
 The right figures show the maximum allowable loads on the cable.
 Do not apply loads exceeding these values to the cable.

1	W.FL2-LP-040HF(06)	CL331-0311-3-06	2	0.64 Dia. coaxial cable	HALOGEN FREE
No.	Part No.	Code No.	No.	Part No.	

UNITS mm	SCALE FREE	COUNT	DESCRIPTION OF REVISIONS	DESIGNED	CHECKED	DATE
HRS	HIROSE ELECTRIC CO., LTD.	APPROVED	•NK. NINOMIYA	20190717	DRAWING NO. PART NO. CODE NO.	WFL2-2HF6-044**TS-A-L
		CHECKED	•NK. NINOMIYA	20190717		
		DESIGNED	•MK. INOUE	20190717		
		DRAWN	•MK. INOUE	20190717		
						1/1