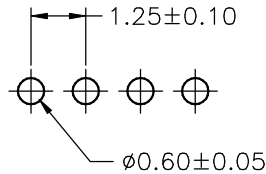
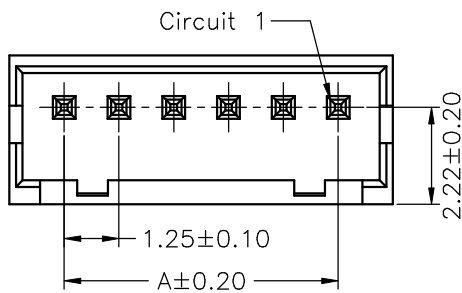


SPECIFICATIONS

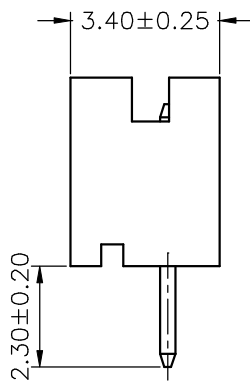
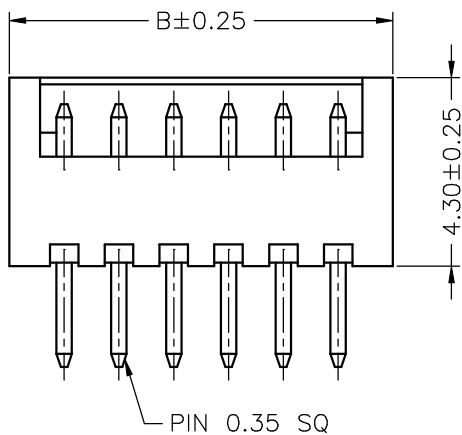
Current Rating: 1A AC,DC
 Voltage Rating: 150V AC,DC
 Temperature Range: -25°C ~ +85°C
 Contact Resistance: 30mΩ Max.
 Insulation Resistance: 500MΩ Min.
 Withstanding Voltage: 500V AC/minute
 Pin Material: Brass/Tin-plated
 Pin Material: Nylon 66,UL94V-0
 Pantone Color: 7529C~7530C

Ordering Information & Dimensions

PART NO.	Dimensions	
	A	B
A1252WV-02P	1.25	3.75
A1252WV-03P	2.50	5.00
A1252WV-04P	3.75	6.25
A1252WV-05P	5.00	7.50
A1252WV-06P	6.25	8.75
A1252WV-07P	7.50	10.00
A1252WV-08P	8.75	11.25
A1252WV-09P	10.00	12.50
A1252WV-10P	11.25	13.75
A1252WV-11P	12.50	15.00
A1252WV-12P	13.75	16.25
A1252WV-13P	15.00	17.50
A1252WV-14P	16.25	18.75
A1252WV-15P	17.50	20.00



P.C.B LAYOUT



				JOINT TECH ELECTRONIC IND. CO., LTD.	
				JOY DAY INDUSTRIAL CO., LTD.	
		UNIT	SCALE	SHEET	TITLE:
		mm		1 of 1	1.25mm PITCH 180° SINGLE ROW WAFER
		DRAWN BY	APPROVED BY		
		董正一	董正一		
		2001.02.01	2001.02.01		
		GENERAL TOLERANCE			
		X. X±0.25	ANGLE±		
B0	NEW RELEASE	2006.05.31	X. XX±0.15		DRAW NO. :
REV.	DESCRIPTION	DATE	X. XXX±0.05		A1252WV-XP
					REV. B0