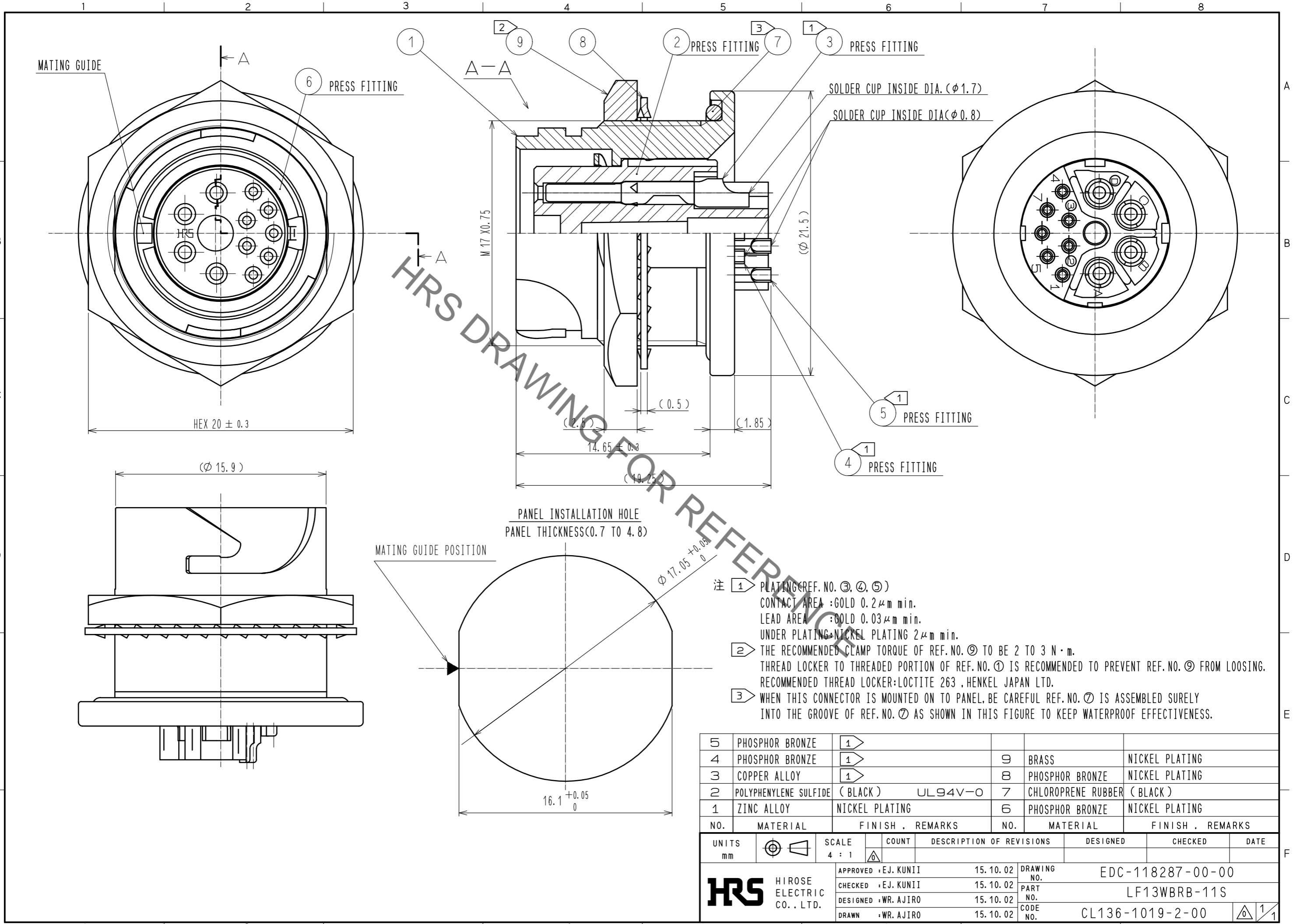


Aug.1.2022 Copyright 2022 HIROSE ELECTRIC CO., LTD. All Rights Reserved.
In case of consideration for using Automotive equipment / device which demand high reliability, kindly contact our sales window correspondents.



- 注 ① PLATING (REF. NO. ③, ④, ⑤)
CONTACT AREA : GOLD 0.2 μ m min.
LEAD AREA : GOLD 0.03 μ m min.
UNDER PLATING : NICKEL PLATING 2 μ m min.
- ② THE RECOMMENDED CLAMP TORQUE OF REF. NO. ⑨ TO BE 2 TO 3 N · m.
THREAD LOCKER TO THREADED PORTION OF REF. NO. ① IS RECOMMENDED TO PREVENT REF. NO. ⑨ FROM LOOSING.
RECOMMENDED THREAD LOCKER : LOCTITE 263 , HENKEL JAPAN LTD.
- ③ WHEN THIS CONNECTOR IS MOUNTED ON TO PANEL, BE CAREFUL REF. NO. ⑦ IS ASSEMBLED SURELY INTO THE GROOVE OF REF. NO. ⑦ AS SHOWN IN THIS FIGURE TO KEEP WATERPROOF EFFECTIVENESS.

5	PHOSPHOR BRONZE	①			
4	PHOSPHOR BRONZE	①	9	BRASS	NICKEL PLATING
3	COPPER ALLOY	①	8	PHOSPHOR BRONZE	NICKEL PLATING
2	POLYPHENYLENE SULFIDE (BLACK)	UL94V-0	7	CHLOROPRENE RUBBER (BLACK)	
1	ZINC ALLOY	NICKEL PLATING	6	PHOSPHOR BRONZE	NICKEL PLATING
NO.	MATERIAL	FINISH . REMARKS	NO.	MATERIAL	FINISH . REMARKS

UNITS	\oplus	SCALE	COUNT	DESCRIPTION OF REVISIONS	DESIGNED	CHECKED	DATE
mm		4 : 1	\triangle				
APPROVED : EJ. KUNII				15.10.02	DRAWING NO. EDC-118287-00-00		
CHECKED : EJ. KUNII				15.10.02	PART NO. LF13WBRB-11S		
DESIGNED : WR. AJIRO				15.10.02	CODE NO. CL136-1019-2-00		
DRAWN : WR. AJIRO				15.10.02	①/1		