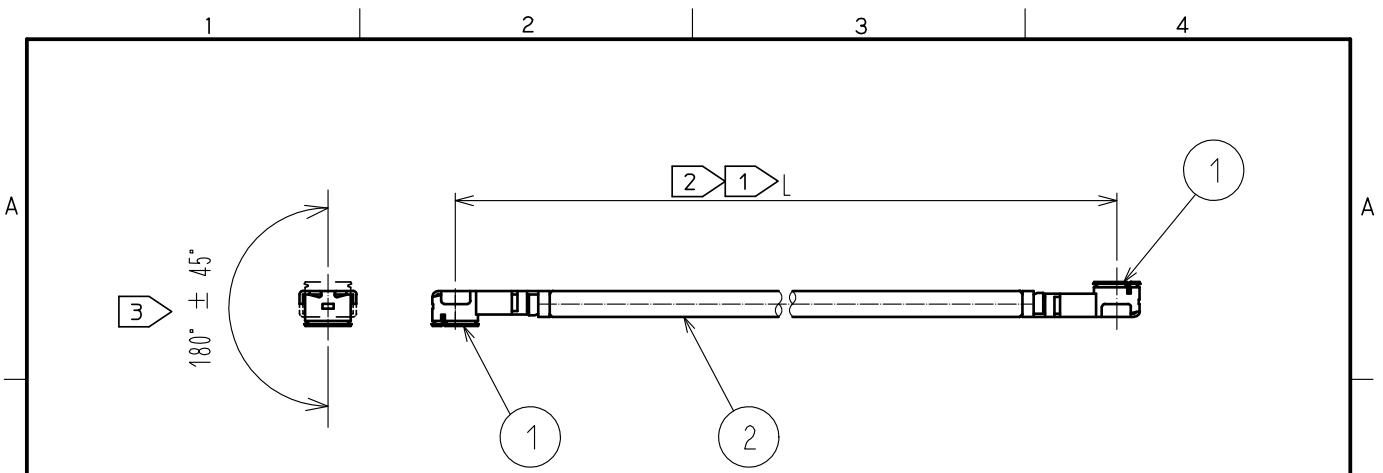


Aug.1.2022 Copyright 2022 HIROSE ELECTRIC CO., LTD. All Rights Reserved.  
 In case of consideration for using Automotive equipment / device which demand high reliability, kindly contact our sales window correspondents.



Part No.	Cable color
~088*1PD~	GRAY
~088*2PD~	BLACK

NOTE ① We indicate the length of the harness on the last of product name, 'L' part.

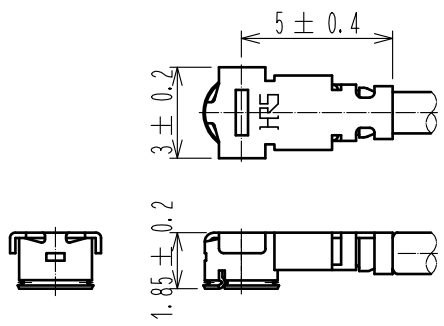
② Tolerance for [ L ]

Length L [mm]	Tolerance [mm]
$35 \leq L \leq 200$	$\pm 4$
$200 < L \leq 500$	$\pm 8$
$500 < L \leq 1000$	$\pm 12$
$1000 < L$	$\pm 1.5\%$

③ Connector rotation angle is within  $\pm 45$  degree from the above image.  
 For long length in the case of  $L > 500$ , the angle is optional.

4. Specifications are subject to change without notice.

【 DIMENSIONS OF CONNECTOR 】



1	U. FL-LP-088HF(06)	CL331-0560-8-06	2	1.37 Dia. Low Loss coaxial cable.
NO.	PART NO.	CODE NO.	NO.	PART NO.

HALOGEN FREE

UNITS mm		SCALE FREE	COUNT 	DESCRIPTION OF REVISIONS	DESIGNED	CHECKED	DATE
HIROSE ELECTRIC CO., LTD.		APPROVED : NK. NINOMIYA	20181214	DRAWING NO.	UFL-2HF6-088**PD-AC-L		
		CHECKED : MT. KANEKO	20181213	PART NO.	①		
		DESIGNED : MS. MATSUMOTO	20181213	CODE NO.			
		DRAWN : MS. MATSUMOTO	20181213		①/①		