

S SW FS - S01 - A A 05 - HWH

SUNTSU

FOOT SWITCH

SWITCH FUNCTION
A : SPST OFF-(ON)

TERMINAL CODE
05 : Solder Type

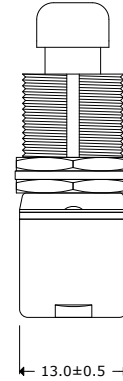
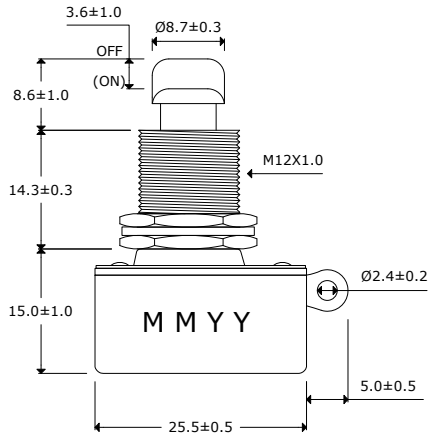
BUSHING AND BUTTON SPEC
A : Button 8.7Ø, Bushing 14.3mm

ACCESSORIES
H : Hex Nut
W : Spring Washer

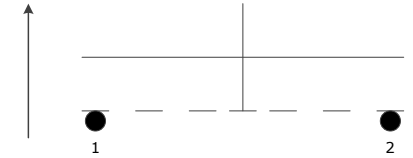


SWITCH

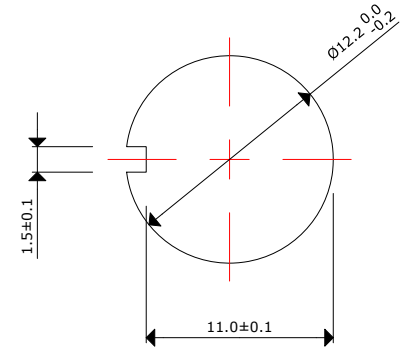
SERIES NUMBER



Test Circuit



Mounting Hole



Soldering Ability:

- Be soldered in 3 seconds
- Be soldered in 360±20°C

Electrical Parameters:

- Rating: 6A 125V AC, 3A 250VAC
- Contact Resistance: 50mΩ Max

Insulation Resistance: DC 500V 100MΩ Min.

Dielectric Strength: AC 1500V 1 minute

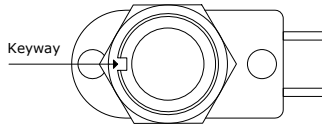
Operation Temperature: -20°C ~ 65°C

Switch Function: 2P SPST OFF-(ON), PUSH ON

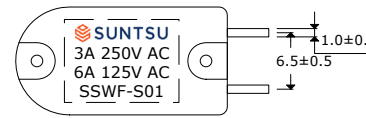
Accessories: 2 HEX Nut & 1 SPRING Washer Assembly

Materials:

- Frame: Black, PF
- Actuator: Ni-plated, Brass
- Terminals: Silver plated, Copper Alloy



Top View



Bottom View

Remarks:

- 500pcs per master carton
- Electrical life 20,000 cycles
- Mechanical life 100,000 cycles



Momentary Foot Switch

Document History			
Edits Made	Date	Edited By	Approved By
Initial Release	09/07/2021	B. Gibbons	KH Mun

Part No.	SSWFS-S01-AA05-HWH	Drawn	B. Gibbons	09/07/2021
Scale	Not drawn to scale	Tolerance		
Unit	mm	Pages		