

C1Z100B THRU C1Z330B

SILICON ZENER DIODE  
1 WATT, 100 THRU 330 VOLTS

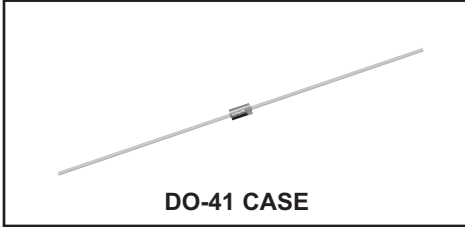


www.centrasemi.com

**DESCRIPTION:**

The CENTRAL SEMICONDUCTOR C1Z100B series silicon Zener diode is a high quality, epoxy molded voltage regulator designed for use in industrial, commercial, entertainment, and computer applications.

**MARKING: FULL PART NUMBER**



DO-41 CASE

**MAXIMUM RATINGS:**

Power Dissipation ( $T_A=50^\circ\text{C}$ )  
Operating and Storage Junction Temperature  
 $V_Z$  Tolerance: Part number with "B" suffix  
 $V_Z$  Tolerance: Part number with "C" suffix  
 $V_Z$  Tolerance: Part number with "D" suffix

**SYMBOL**

$P_D$   
 $T_J, T_{stg}$

**UNITS**

W  
 $^\circ\text{C}$   
%  
%  
%

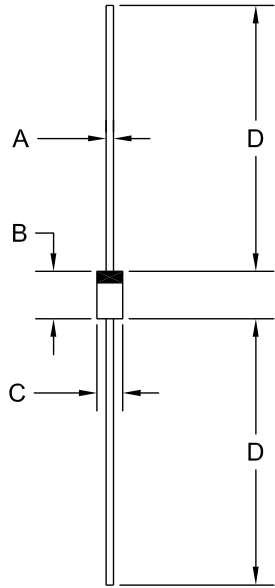
**ELECTRICAL CHARACTERISTICS:** ( $T_A=25^\circ\text{C}$ )  $V_F=1.0\text{V MAX @ } I_F=500\text{mA}$  (for all types)

TYPE	ZENER VOLTAGE $V_Z @ I_{ZT}$			TEST CURRENT	MAXIMUM ZENER IMPEDANCE			MAXIMUM REVERSE CURRENT		MAXIMUM DC CURRENT
	MIN	NOM	MAX	$I_{ZT}$	$Z_{ZT} @ I_{ZT}$	$Z_{ZK} @ I_{ZK}$	$I_R @ V_R$	$I_R @ V_R$	$I_{ZM}$	
	V	V	V	mA	k $\Omega$	k $\Omega$	$\mu\text{A}$	V	mA	
C1Z100B	95.0	100	105.0	2.5	0.35	3.0	0.25	5.0	76.0	10
C1Z110B	104.5	110	115.5	2.3	0.45	4.0	0.25	5.0	83.6	9.1
C1Z120B	114.0	120	126.0	2.0	0.55	4.5	0.25	5.0	91.2	8.3
C1Z130B	123.5	130	136.5	1.9	0.70	5.0	0.25	5.0	98.8	7.7
C1Z150B	142.5	150	157.5	1.7	1.0	6.0	0.25	5.0	114.0	6.7
C1Z160B	152.0	160	168.0	1.6	1.1	6.5	0.25	5.0	121.6	6.3
C1Z180B	171.0	180	189.0	1.4	1.2	7.0	0.25	5.0	136.8	5.6
C1Z200B	190.0	200	210.0	1.2	1.5	8.0	0.25	5.0	152.0	5.0
C1Z300B	285.0	300	315.0	0.85	5.0	9.0	0.25	5.0	240.0	3.3
C1Z330B	313.5	330	346.5	0.75	5.0	9.0	0.25	5.0	260.0	3.0

**C1Z100B THRU C1Z330B**  
**SILICON ZENER DIODE**  
**1 WATT, 100 THRU 330 VOLTS**



**DO-41 CASE - MECHANICAL OUTLINE**



SYMBOL	INCHES		MILLIMETERS	
	MIN	MAX	MIN	MAX
A	0.028	0.034	0.71	0.86
B	0.160	0.205	4.06	5.21
C	0.080	0.107	2.03	2.72
D	1.000	-	25.40	-

DO-41 (REV: R1)

R1

R2 (21-June 2012)

## OUTSTANDING SUPPORT AND SUPERIOR SERVICES



---

### PRODUCT SUPPORT

Central's operations team provides the highest level of support to insure product is delivered on-time.

- Supply management (Customer portals)
- Inventory bonding
- Consolidated shipping options
- Custom bar coding for shipments
- Custom product packing

---

### DESIGNER SUPPORT/SERVICES

Central's applications engineering team is ready to discuss your design challenges. Just ask.

- Free quick ship samples (2<sup>nd</sup> day air)
- Online technical data and parametric search
- SPICE models
- Custom electrical curves
- Environmental regulation compliance
- Customer specific screening
- Up-screening capabilities
- Special wafer diffusions
- PbSn plating options
- Package details
- Application notes
- Application and design sample kits
- Custom product and package development

---

### REQUESTING PRODUCT PLATING

1. If requesting Tin/Lead plated devices, add the suffix " TIN/LEAD" to the part number when ordering (example: 2N2222A TIN/LEAD).
2. If requesting Lead (Pb) Free plated devices, add the suffix " PBFREE" to the part number when ordering (example: 2N2222A PBFREE).

---

### CONTACT US

#### Corporate Headquarters & Customer Support Team

Central Semiconductor Corp.  
145 Adams Avenue  
Hauppauge, NY 11788 USA  
Main Tel: (631) 435-1110  
Main Fax: (631) 435-1824  
Support Team Fax: (631) 435-3388  
[www.centrasemi.com](http://www.centrasemi.com)

**Worldwide Field Representatives:**  
[www.centrasemi.com/wwreps](http://www.centrasemi.com/wwreps)

**Worldwide Distributors:**  
[www.centrasemi.com/wwdistributors](http://www.centrasemi.com/wwdistributors)

---

For the latest version of Central Semiconductor's **LIMITATIONS AND DAMAGES DISCLAIMER**, which is part of Central's Standard Terms and Conditions of sale, visit: [www.centrasemi.com/terms](http://www.centrasemi.com/terms)