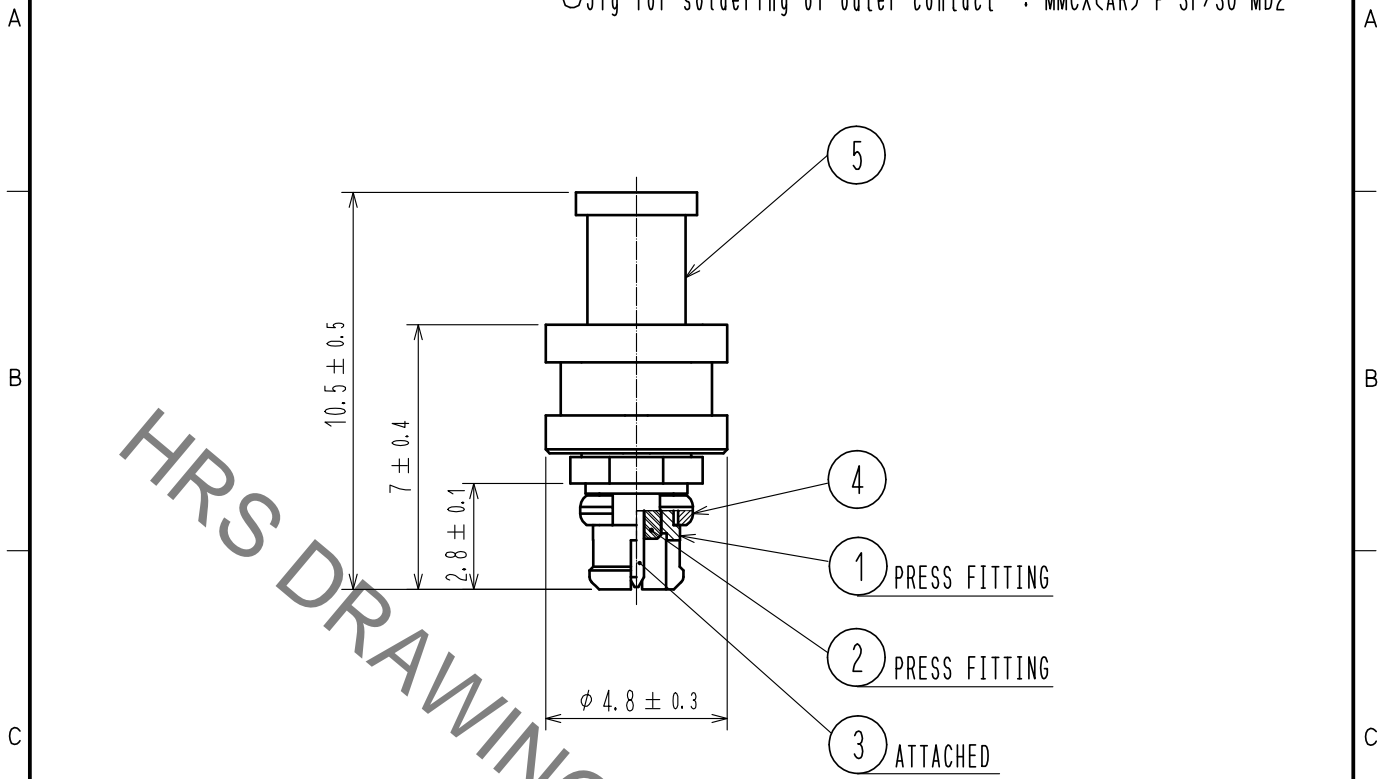


Aug.1.2022 Copyright 2022 HIROSE ELECTRIC CO., LTD. All Rights Reserved.
In case of consideration for using Automotive equipment / device which demand high reliability, kindly contact our sales window correspondents.

<Cable soldering tool>

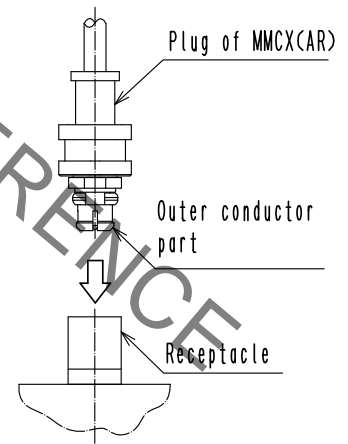
○Jig for soldering of center contact : MMCX(AR)-P-SF/SO-MD1

○Jig for soldering of outer contact : MMCX(AR)-P-SF/SO-MD2



【 USAGE PRECAUTIONS OF MMCX(AR) 】

1. Insertion or extraction a plug of MMCX(AR) as perpendicularly as possible with aligning the plug with a receptacle. When aligned insertion or extraction is not performed, it would damage or deform an outer conductor part.
2. Do not apply excess load on soldered section with cable



3	PHOSPHOR BRONZE	GOLD PLATING		5	BRASS	GOLD PLATING		
2	PTFE			4	BERYLLIUM COPPER	GOLD PLATING		
1	BRASS	GOLD PLATING						
NO.	MATERIAL	FINISH	REMARKS	NO.	MATERIAL	FINISH	REMARKS	
UNITS mm		SCALE 5 : 1	COUNT 	DESCRIPTION OF REVISIONS		DESIGNED	CHECKED	DATE
HIROSE ELECTRIC CO., LTD.		APPROVED	: KY. SHIMIZU	16.07.25	DRAWING NO.	EDC-364476-00-00		
		CHECKED	: KY. SHIMIZU	16.07.25	PART NO.	MMCX(AR)-P-SF047		
		DESIGNED	: TM. YOSHIDA	16.07.25	CODE NO.	CL339-0032-0-00		
		DRAWN	: TM. YOSHIDA	16.07.25		1/1		