

SUPER FAST RECTIFIER

VOLTAGE RANGE: 50 --- 600 V
CURRENT: 2.0, 1.9,1.6 A

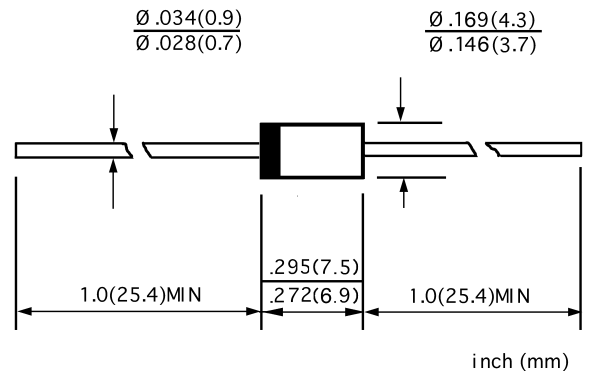
FEATURES

- ◇ Low cost
- ◇ Diffused junction
- ◇ Low leakage
- ◇ Low forward voltage drop
- ◇ High current capability
- ◇ Easily cleaned with alcohol,Isopropanol and similar solvents

MECHANICAL DATA

- ◇ Case: JEDEC DO-15L,molded plastic
- ◇ Terminals: Axial lead ,solderable per MIL- STD-202,Method 208
- ◇ Polarity: Color band denotes cathode
- ◇ Weight: 0.017 ounces,0.48 grams
- ◇ Mounting position: Any

DO - 15L



MAXIMUM RATINGS AND ELECTRICAL CHARACTERISTICS

Ratings at 25°C ambient temperature unless otherwise specified.

Single phase,half wave,50 Hz,resistive or inductive load. For capacitive load,derate by 20%.

		BYV27 -50	BYV27 -100	BYV27 -150	BYV27 -200	BYV27 -300	BYV27 -400	BYV27 -600	UNITS	
Maximum recurrent peak reverse voltage	V_{RRM}	50	100	150	200	300	400	600	V	
Maximum RMS voltage	V_{RMS}	35	70	105	140	210	280	420	V	
Maximum DC blocking voltage	V_{DC}	50	100	150	200	300	400	600	V	
Maximum average forward rectified current 9.5mm lead length, @ $T_A=75^\circ C$	$I_{F(AV)}$	2.0			1.9		1.6		A	
Peak forward surge current 10ms single half-sine-wave superimposed on rated load @ $T_J=125^\circ C$	I_{FSM}	50.0						40.0		A
Maximum instantaneous forward voltage @ $I_F=I_{F(AV)}$	V_F	0.98			1.05		1.25		V	
Maximum reverse current @ $T_A=25^\circ C$ at rated DC blocking voltage @ $T_A=100^\circ C$	I_R	5.0			100.0			μA		
Maximum reverse recovery time (Note1)	t_{rr}	25			50			ns		
Typical junction capacitance (Note2)	C_J	62						pF		
Typical thermal resistance (Note3)	$R_{\theta JA}$	100						$^\circ C/W$		
Operating junction temperature range	T_J	- 55 ----- + 150						$^\circ C$		
Storage temperature range	T_{STG}	- 55 ----- + 150						$^\circ C$		

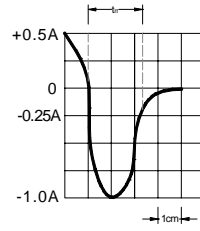
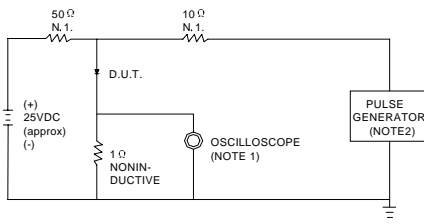
NOTE: 1. Measured with $I_F=0.5A$, $I_R=1A$, $I_{rr}=0.25A$.

2. Measured at 1.0MHz and applied reverse voltage of 4.1V DC.

3. Thermal resistance from junction to ambient.

www.galaxycn.com

FIG.1 – TEST CIRCUIT DIAGRAM AND REVERSE RECOVERY TIME CHARACTERISTIC



NOTES: 1. RISE TIME = 7ns MAX INPUT IMPEDANCE = 1MΩ, 22pF.
 2. RISE TIME = 10ns MAX SOURCE IMPEDANCE = 50 Ω.

SET TIME BASE FOR 10 ns/cm

FIG.2 – TYPICAL FORWARD CHARACTERISTIC

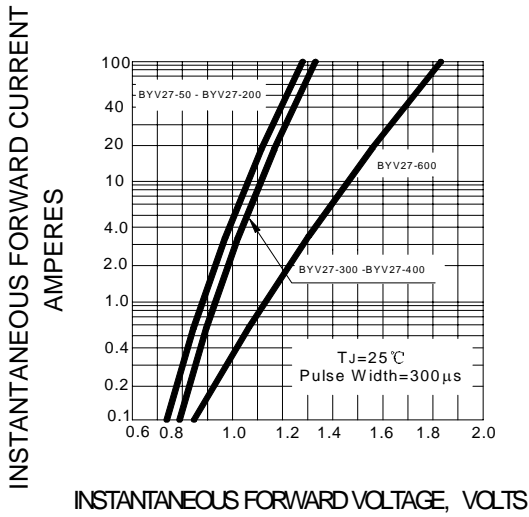


FIG.3 – FORWARD DERATING CURVE

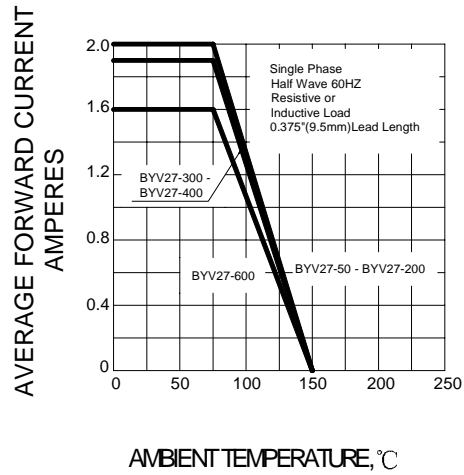


FIG.4 – TYPICAL JUNCTION CAPACITANCE

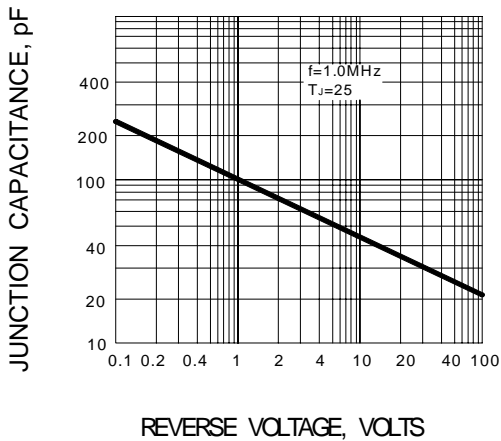


FIG.5- PEAK FORWARD SURGE CURRENT

