

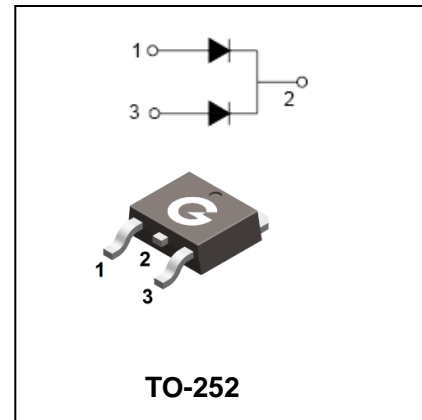
Schottky Barrier Rectifiers

MBRD6100CT

FEATURES

- Extremely Fast Switching.
- Extremely Low Forward Drop.

HF



Ordering Information

Part Number	Package	Shipping	Marking Code
MBRD6100CT	TO-252	80 pcs / Tube or 2500 pcs / Tape Reel	MBRD6100CT

MAXIMUM RATING operating temperature range applies unless otherwise specified

Symbol	Parameter	Value	Unit
V_{RRM}	Rcurrent Peak Reverse Voltage	100	V
V_{RMS}	RMS Voltage	70	V
V_{DC}	DC Blocking Voltage	100	V
$I_{F(AV)}$	Maximum Average Forward Current	6	A
I_{FSM}	Peak Forward Surge Current 8.3ms Single Half Sine-wave Superimosed on Rated Load	78	A
$R_{\theta JA}$	Thermal Resistance. Junction to ambient	100	$^{\circ}C/W$
$T_j T_{stg}$	Operating Junction and Storage Temperature Range	-55 to +150	$^{\circ}C$

Schottky Barrier Rectifiers

MBRD6100CT

ELECTRICAL CHARACTERISTICS @ $T_a=25^\circ\text{C}$ unless otherwise specified

Parameter	Symbol	Test conditions	MAX	UNIT
Forward Voltage	V_F	$I_F=3\text{A}, T_A=25^\circ\text{C}$	0.76	V
Reverse Current	I_R	$V_R=V_{RRM}, T_A=25^\circ\text{C}$	0.2	mA

TYPICAL CHARACTERISTICS @ $T_a=25^\circ\text{C}$ unless otherwise specified

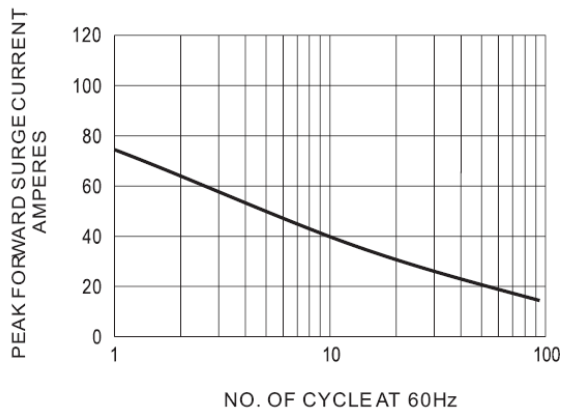


Fig.1-MAXIMUM NON-REPETITIVE SURGE CURRENT

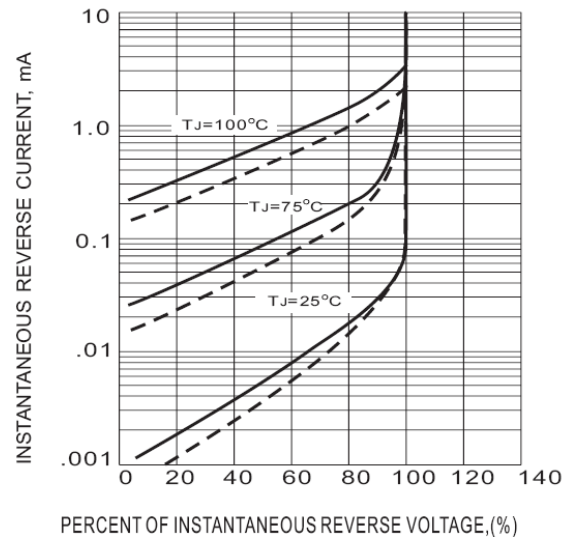


Fig.2-TYPICAL REVERSE CHARACTERISTIC

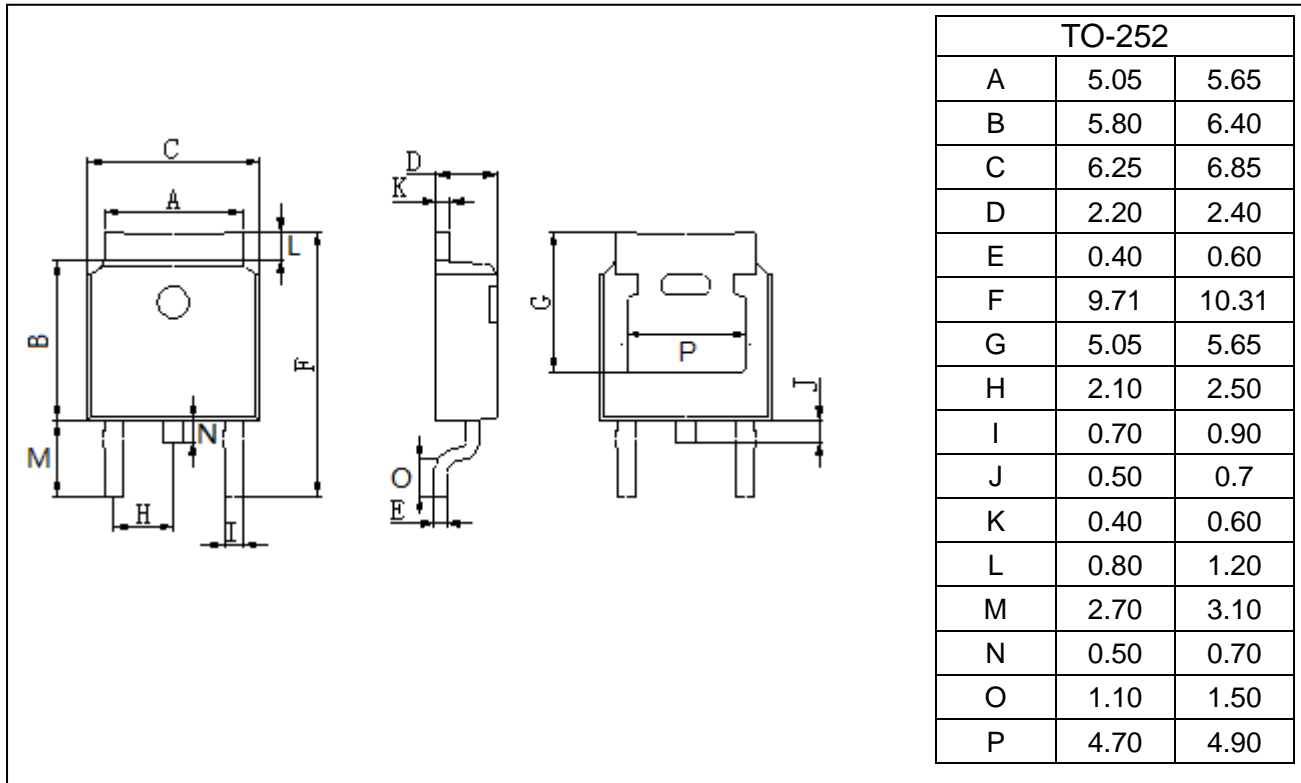
Schottky Barrier Rectifiers

MBRD6100CT

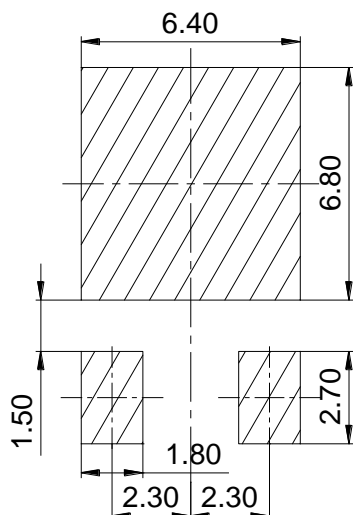
PACKAGE OUTLINE

Plastic surface mounted package

TO-252



SOLDERING FOOTPRINT



Unit:mm