



# BAS40WS

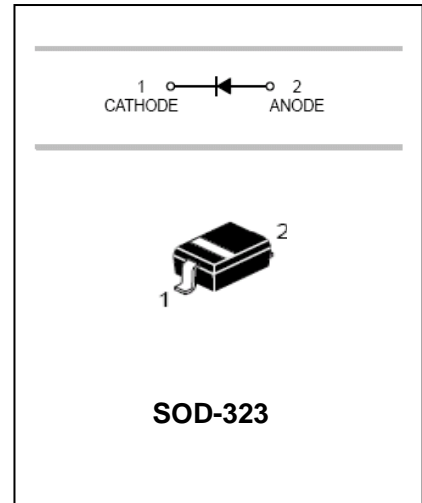
## Schottky barrier diodes

### FEATURES

- Low turn-on voltage
- Fast switching
- PN junction guard for transient and ESD protection
- Designed for surface mount application
- Plastic material-UL recognition flammability classification 94V-0



Lead-free



### APPLICATIONS

- Surface mount fast switching diode

### ORDERING INFORMATION

Type No.	Marking	Package Code
BAS40WS	43	SOD-323

### MAXIMUM RATING @ Ta=25°C unless otherwise specified

Characteristic	Symbol	Value	Unit
Peak repetitive peak reverse voltage	$V_{RRM}$	40	V
Working peak reverse voltage	$V_{RWM}$		
DC Reverse Voltage	$V_R$		
Forward Continuous Current	$I_F$	200	mA
Peak forward surge current@<1.0s	$I_{FSM}$	600	mA
Power Dissipation	$P_d$	200	mW
Thermal Resistance Junction to Ambient	$R_{\theta JA}$	625	°C/W
Junction and Storage Temperature Range	$T_j, T_{STG}$	-55 to +125	°C

### ELECTRICAL CHARACTERISTICS @ Ta=25°C unless otherwise specified

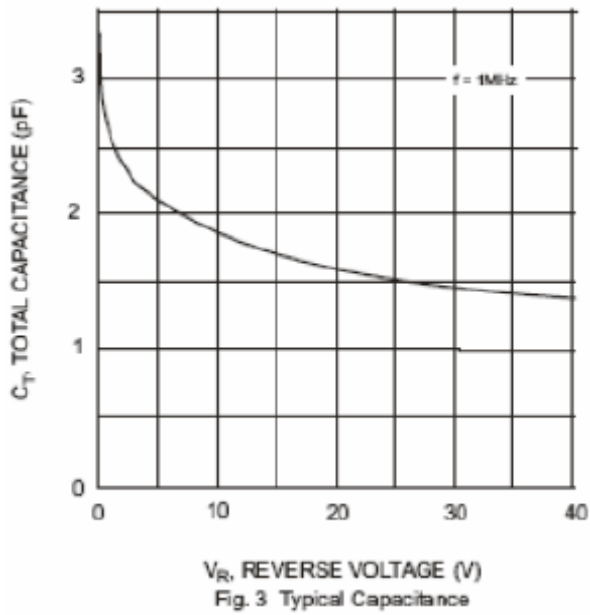
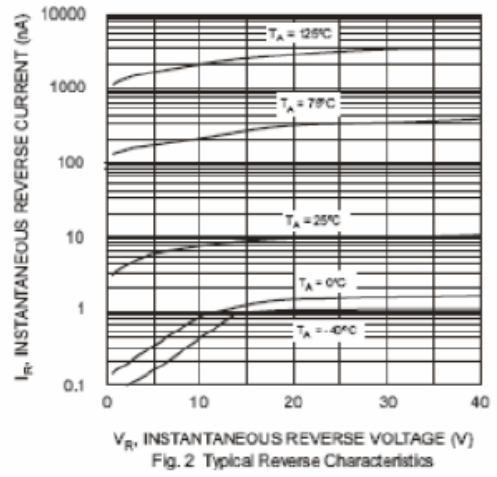
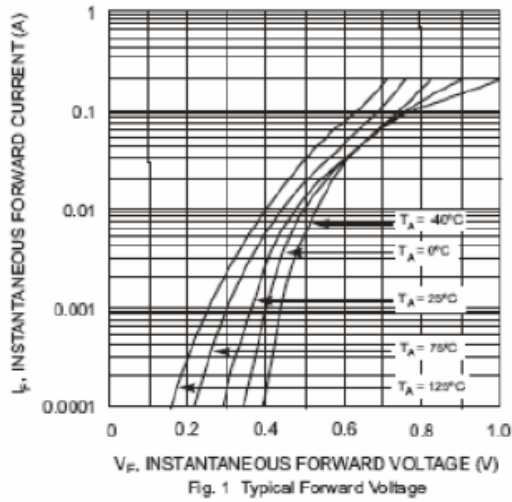
Characteristic	Symbol	Min	Typ.	Max	Unit	Test Condition
Reverse Breakdown Voltage	$V_{(BR)R}$	40		-	V	$I_R=10\mu A$
Forward Voltage	$V_F$	-		0.38 1.0	V	$I_F=1.0mA$ $I_F=40mA$
Reverse Current	$I_R$	-	20	200	nA	$V_R=30V$
Capacitance between terminals	$C_T$	-	4	5	pF	$V_R=0, f=1.0MHz$
Reverse Recovery Time	$t_{rr}$	-		5	ns	$I_F=I_R=10mA,$ $R_L=100\Omega$



# BAS40WS

## Schottky barrier diodes

TYPICAL CHARACTERISTICS @  $T_a=25^\circ\text{C}$  unless otherwise specified





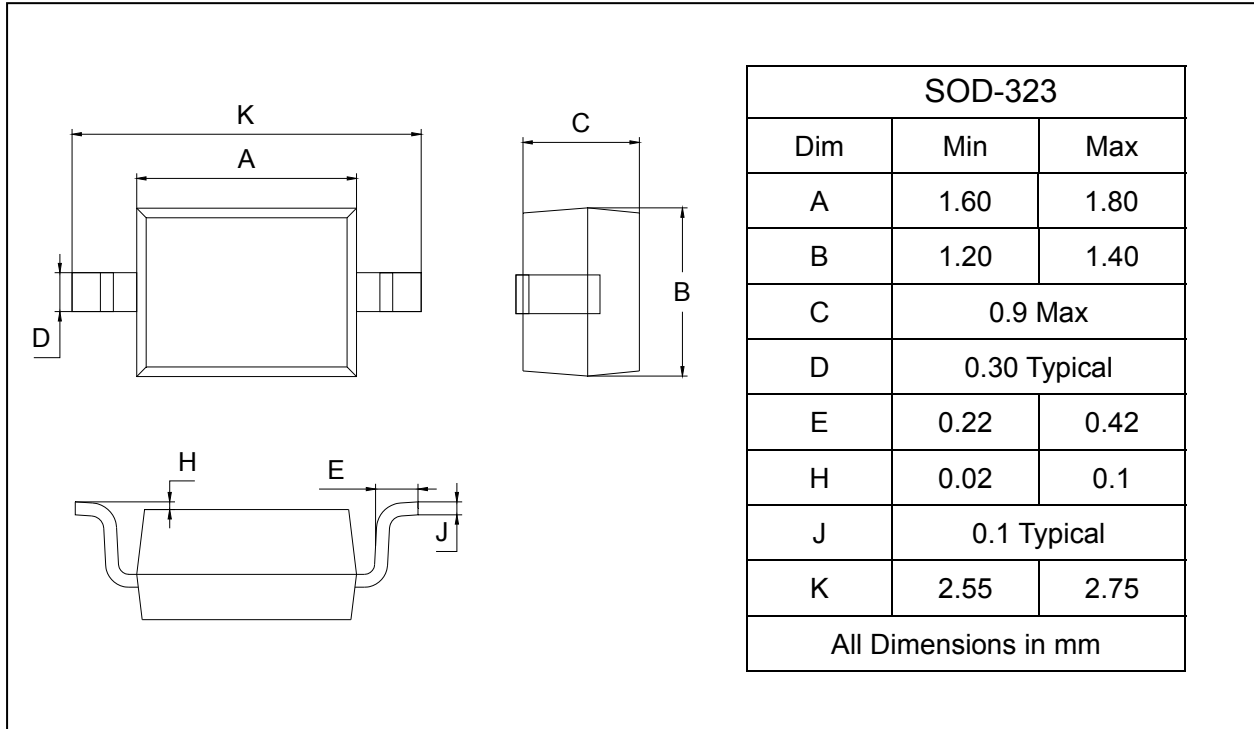
# BAS40WS

## Schottky barrier diodes

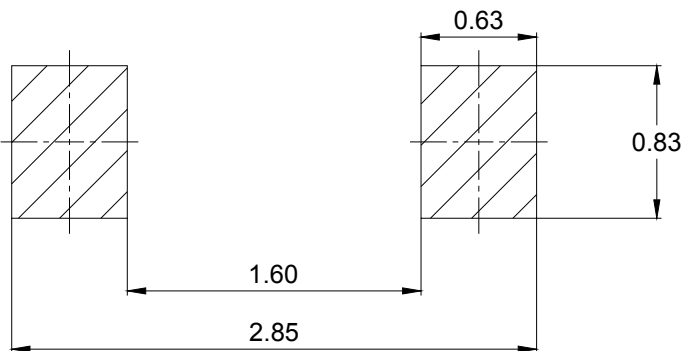
### PACKAGE OUTLINE

Plastic surface mounted package

SOD-323



### SOLDERING FOOTPRINT



Unit : mm

### PACKAGE INFORMATION

Device	Package	Shipping
BAS40WS	SOD-323	3000/Tape&Reel