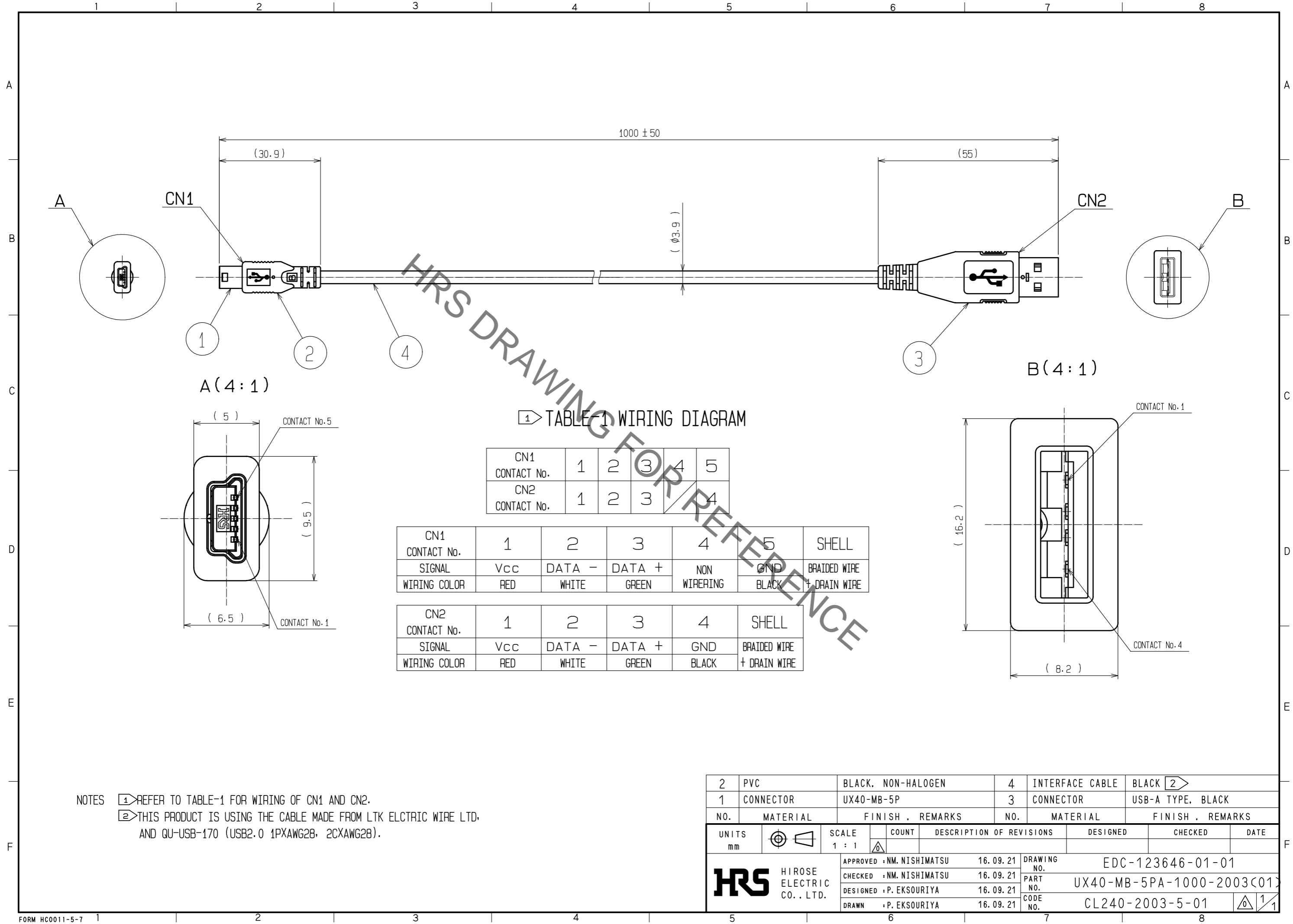


Aug.1.2022 Copyright 2022 HIROSE ELECTRIC CO., LTD. All Rights Reserved.  
 In case of consideration for using Automotive equipment / device which demand high reliability, kindly contact our sales window correspondents.



1 TABLE-1 WIRING DIAGRAM

CN1 CONTACT No.	1	2	3	4	5
CN2 CONTACT No.	1	2	3	4	

CN1 CONTACT No.	1	2	3	4	5	SHELL
SIGNAL	VCC	DATA -	DATA +	NON WIRING	GND	BRAIDED WIRE
WIRING COLOR	RED	WHITE	GREEN		BLACK	+ DRAIN WIRE

CN2 CONTACT No.	1	2	3	4	SHELL
SIGNAL	VCC	DATA -	DATA +	GND	BRAIDED WIRE
WIRING COLOR	RED	WHITE	GREEN	BLACK	+ DRAIN WIRE

NOTES 1 REFER TO TABLE-1 FOR WIRING OF CN1 AND CN2.  
 2 THIS PRODUCT IS USING THE CABLE MADE FROM LTK ELCTRIC WIRE LTD. AND QU-USB-170 (USB2.0 1PXA WG28, 2CXAWG28).

2	PVC	BLACK, NON-HALOGEN	4	INTERFACE CABLE	BLACK 2
1	CONNECTOR	UX40-MB-5P	3	CONNECTOR	USB-A TYPE, BLACK
NO.	MATERIAL	FINISH, REMARKS	NO.	MATERIAL	FINISH, REMARKS
UNITS mm		SCALE 1 : 1	COUNT 	DESCRIPTION OF REVISIONS	DESIGNED
<b>HRS</b> HIROSE ELECTRIC CO., LTD.		APPROVED : NM. NISHIMATSU 16.09.21	DESIGNED : P. EKSOURIYA 16.09.21	DRAWING NO. EDC-123646-01-01	
		CHECKED : NM. NISHIMATSU 16.09.21	DRAWN : P. EKSOURIYA 16.09.21	PART NO. UX40-MB-5PA-1000-2003(01)	
				CODE NO. CL240-2003-5-01	
				1/1	