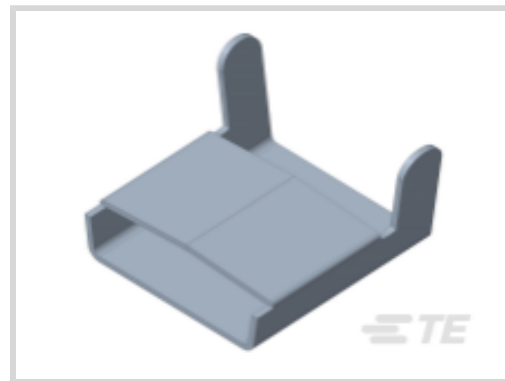




Energy & Power > Power Systems Connectors > Power Systems Clamps



Power System Clamp Product Availability: **Worldwide**

Power System Clamp Technology: **Plastic Grip Type**

Power System Clamp Voltage Class: **≤ 42 kV**

Overhead: **Yes**

Fuse Link Design: **No**

Features

Product Type Features

Product Family	Fixing device
Power System Clamp Technology	Plastic Grip Type
Fuse Link Design	No

Electrical Characteristics

Power System Clamp Voltage Class	≤ 42 kV
----------------------------------	---------

Body Features

Weight	10 gr/pc
--------	----------

Mechanical Attachment

Shear Head System	No
Suspension Bracket Included	No

Operation/Application

Overhead	Yes
----------	-----

Product Availability

Minimum Order Quantity	100
Power System Clamp Product Availability	Worldwide

Packaging Features

Minimum Packaging Unit	100
------------------------	-----



Product Compliance

[For compliance documentation, visit the product page on TE.com>](#)

EU RoHS Directive 2011/65/EU	Compliant
EU ELV Directive 2000/53/EC	Compliant
China RoHS 2 Directive MIIT Order No 32, 2016	No Restricted Materials Above Threshold
EU REACH Regulation (EC) No. 1907/2006	Current ECHA Candidate List: JUNE 2024 (241) Candidate List Declared Against: JUNE 2024 (241) Does not contain REACH SVHC
Halogen Content	Low Halogen - Br, Cl, F, I < 900 ppm per homogenous material. Also BFR/CFR/PVC Free
Solder Process Capability	Not applicable for solder process capability

Product Compliance Disclaimer

This information is provided based on reasonable inquiry of our suppliers and represents our current actual knowledge based on the information they provided. This information is subject to change. The part numbers that TE has identified as EU RoHS compliant have a maximum concentration of 0.1% by weight in homogenous materials for lead, hexavalent chromium, mercury, PBB, PBDE, DBP, BBP, DEHP, DIBP, and 0.01% for cadmium, or qualify for an exemption to these limits as defined in the Annexes of Directive 2011/65/EU (RoHS2). Finished electrical and electronic equipment products will be CE marked as required by Directive 2011/65/EU. Components may not be CE marked. Additionally, the part numbers that TE has identified as EU ELV compliant have a maximum concentration of 0.1% by weight in homogenous materials for lead, hexavalent chromium, and mercury, and 0.01% for cadmium, or qualify for an exemption to these limits as defined in the Annexes of Directive 2000/53/EC (ELV). Regarding the REACH Regulation, the information TE provides on SVHC in articles for this part number is based on the latest European Chemicals Agency (ECHA) 'Guidance on requirements for substances in articles' posted at this URL: <https://echa.europa.eu/guidance-documents/guidance-on-reach>

Compatible Parts



Customers Also Bought



TE Part #2107018-3
RF 2004 50M (68-39-644)



TE Part #EL8273-000
RSES-VD-5251-FR01



TE Part #2832098-1
EA 1500 DT 68-25-030



TE Part #2832107-1
EAD 1500 DT 68-25-038



TE Part #709639-1
C 25 E



TE Part #709640-1
C 35 E

TE Part #1574817-1
ES 2000/P977

TE Part #1701971-3
P31F

TE Part #1984945-1
KIT MALT ACCESSOIRES BTS

TE Part #D88424-004
SMOE-63360-FR

Documents

Product Drawings

A200

English

Datasheets & Catalog Pages

CONNECTORS & FITTINGS

English