

**TYPES SN54290, SN54293, SN54LS290, SN54LS293
SN74290, SN74293, SN74LS290, SN74LS293
DECADE AND 4-BIT BINARY COUNTERS**
BULLETIN NO. DL-5 7611833, MARCH 1974—REVISED OCTOBER 1976

'290, 'LS290 . . . DECADE COUNTERS
'293, 'LS293 . . . 4-BIT BINARY COUNTERS

- GND and V_{CC} on Corner Pins
(Pins 7 and 14 Respectively)

description

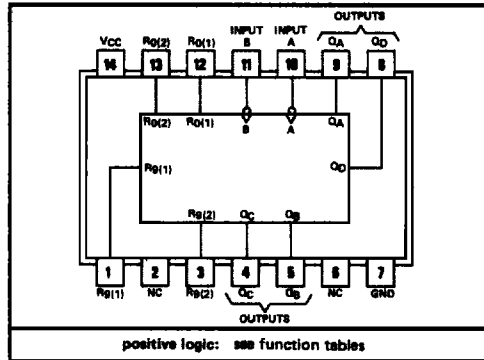
The SN54290/SN74290, SN54LS290/SN74LS290, SN54293/SN74293, and SN54LS293/SN74LS293 counters are electrically and functionally identical to the SN5490A/SN7490A, SN54LS90/SN74LS90, SN5493A/SN7493A, and SN54LS93/SN74LS93, respectively. Only the arrangement of the terminals has been changed for the '290, 'LS290, '293, and 'LS293.

Each of these monolithic counters contains four master-slave flip-flops and additional gating to provide a divide-by-two counter and a three-stage binary counter for which the count cycle length is divide-by-five for the '290 and 'LS290 and divide-by-eight for the '293 and 'LS293.

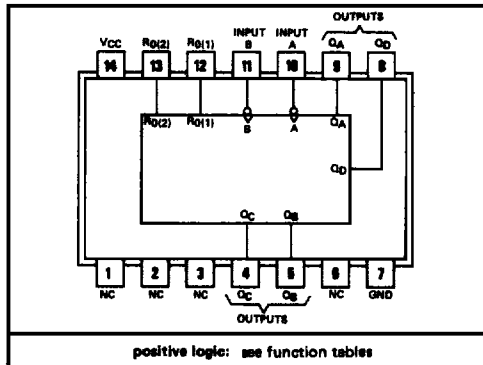
All of these counters have a gated zero reset and the '290 and 'LS290 also have gated set-to-nine inputs for use in BCD nine's complement applications.

To use the maximum count length (decade or four-bit binary) of these counters, the B input is connected to the Q_A output. The input count pulses are applied to input A and the outputs are as described in the appropriate function table. A symmetrical divide-by-ten count can be obtained from the '290 and 'LS290 counters by connecting the Q_D output to the A input and applying the input count to the B input which gives a divide-by-ten square wave at output Q_A.

SN54290, SN54LS290 . . . J OR W PACKAGE
SN74290, SN74LS290 . . . J OR N PACKAGE
(TOP VIEW)



SN54293, SN54LS293 . . . J OR W PACKAGE
SN74293, SN74LS293 . . . J OR N PACKAGE
(TOP VIEW)



NC—No internal connection

TYPES SN54290, SN54293, SN54LS290, SN54LS293, SN74290, SN74293, SN74LS290, SN74LS293 DECADE AND 4-BIT BINARY COUNTERS

'290, 'LS290
BCD COUNT SEQUENCE
(See Note A)

COUNT	OUTPUT			
	Q _D	Q _C	Q _B	Q _A
0	L	L	L	L
1	L	L	L	H
2	L	L	H	L
3	L	L	H	H
4	L	H	L	L
5	L	H	L	H
6	L	H	H	L
7	L	H	H	H
8	H	L	L	L
9	H	L	L	H

'290, 'LS290
BI-QUINARY (5-2)
(See Note B)

COUNT	OUTPUT			
	Q _A	Q _D	Q _C	Q _B
0	L	L	L	L
1	L	L	L	H
2	L	L	H	L
3	L	L	H	H
4	L	H	L	L
5	H	L	L	L
6	H	L	L	H
7	H	L	H	L
8	H	L	H	H
9	H	H	L	L

'290, 'LS290
RESET/COUNT FUNCTION TABLE

RESET INPUTS				OUTPUT			
R ₀ (1)	R ₀ (2)	R ₉ (1)	R ₉ (2)	Q _D	Q _C	Q _B	Q _A
H	H	L	X	L	L	L	L
H	H	X	L	L	L	L	L
X	X	H	H	H	L	L	H
X	L	X	L	COUNT			
L	X	L	X	COUNT			
L	X	X	L	COUNT			
X	L	L	X	COUNT			

'293, 'LS293
COUNT SEQUENCE
(See Note C)

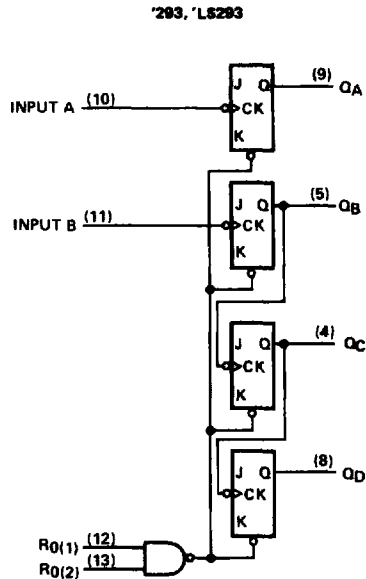
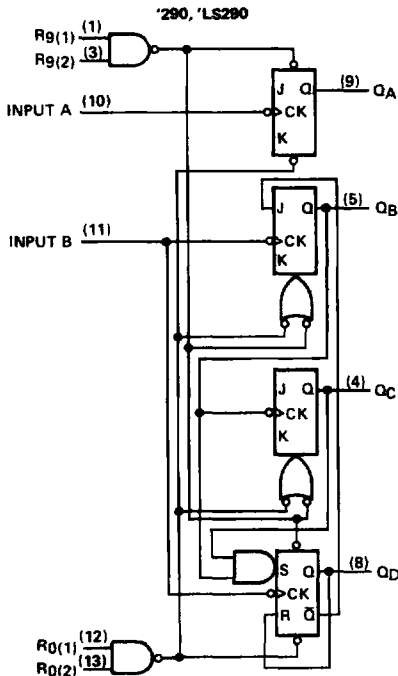
COUNT	OUTPUT			
	Q _D	Q _C	Q _B	Q _A
0	L	L	L	L
1	L	L	L	H
2	L	L	H	L
3	L	L	H	H
4	L	H	L	L
5	L	H	L	H
6	L	H	H	L
7	L	H	H	H
8	H	L	L	L
9	H	L	L	H
10	H	L	H	L
11	H	L	H	H
12	H	H	L	L
13	H	H	L	H
14	H	H	H	L
15	H	H	H	H

'293, 'LS293
RESET/COUNT FUNCTION TABLE

RESET INPUTS		OUTPUT			
R ₀ (1)	R ₀ (2)	Q _D	Q _C	Q _B	Q _A
H	H	L	L	L	L
L	X	COUNT			
X	L	COUNT			

- NOTES: A. Output Q_A is connected to input B for BCD count.
B. Output Q_D is connected to input A for bi-quinary count.
C. Output Q_A is connected to input B.
D. H = high level, L = low level, X = irrelevant

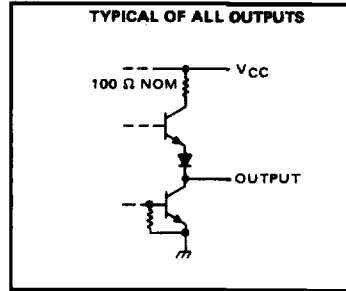
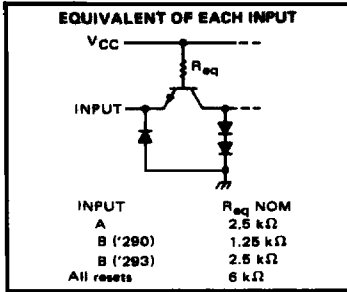
functional block diagrams



The J and K inputs shown without connection are for reference only and are functionally at a high level.

TYPES SN64290, SN64293, SN74290, SN74293 DECADE AND 4-BIT BINARY COUNTERS

schematics of inputs and outputs



absolute maximum ratings over operating free-air temperature range (unless otherwise noted)

Supply voltage, V_{CC} (see Note 1)	7 V
Input voltage	5.5 V
Intermitter voltage (see Note 2)	5.5 V
Operating free-air temperature range: SN54' Circuits	-55°C to 125°C
SN74' Circuits	0°C to 70°C
Storage temperature range	-65°C to 150°C

NOTES: 1. Voltage values, except intermitter voltage, are with respect to network ground terminal.
 2. This is the voltage between two emitters of a multiple-emitter transistor. For these circuits, this rating applies between the two R_D inputs, and for the '290 circuit, it also applies between the two R_B inputs.

recommended operating conditions

	SN54'			SN74'			UNIT
	MIN	NOM	MAX	MIN	NOM	MAX	
Supply voltage, V_{CC}	4.5	5	5.5	4.75	5	5.25	V
High-level output current, I_{OH}			-800			-800	μ A
Low-level output current, I_{OL}			16			16	mA
Count frequency, f_{count}	A input	0	32	0	32		MHz
	B input	0	16	0	16		
Pulse width, t_w	A input	15		15			ns
	B input	30		30			
	Reset inputs	15		15			
Reset inactive-state setup time, t_{SU}	25			25			ns
Operating free-air temperature, T_A	-55		125	0		70	°C

TYPES SN54290, SN54293, SN74290, SN74293

DECADE AND 4-BIT BINARY COUNTERS

REVISED AUGUST 1977

electrical characteristics over recommended operating free-air temperature range (unless otherwise noted)

PARAMETER		TEST CONDITIONS†	'290			'293			UNIT
			MIN	TYP‡	MAX	MIN	TYP‡	MAX	
V _{IH}	High-level input voltage		2			2			V
V _{IL}	Low-level input voltage		0.8			0.8			V
V _{IK}	Input clamp voltage	V _{CC} = MIN, I _I = -12 mA	-1.5			-1.5			V
V _{OH}	High-level output voltage	V _{CC} = MIN, V _{IH} = 2 V, V _{IL} = 0.8 V, I _{OH} = -800 μA	2.4	3.4		2.4	3.4	V	
V _{OL}	Low-level output voltage	V _{CC} = MIN, V _{IH} = 2 V, V _{IL} = 0.8 V, I _{OL} = 16 mA¶	0.2	0.4		0.2	0.4	V	
I _I	Input current at maximum input voltage	V _{CC} = MAX, V _I = 5.5 V	1			1			mA
I _{IH}	High-level input current	Any reset	40			40			μA
		A input	80			80			
		B input	120			80			
I _{IL}	Low-level input current	Any reset	-1.6			-1.6			mA
		A input	-3.2			-3.2			
		B input	-4.8			-3.2			
I _{OS}	Short-circuit output current§	V _{CC} = MAX	SN54'	-20	-57	-20	-57	mA	
			SN74'	-18	-57	-18	-57		
I _{CC}	Supply current	V _{CC} = MAX, See Note 3	29	42		26	39	mA	

† For conditions shown as MIN or MAX, use the appropriate value specified under recommended operating conditions.

‡ All typical values are at V_{CC} = 5 V, T_A = 25°C.

§ Not more than one output should be shorted at a time.

¶ Q_A outputs are tested at I_{OL} = 16 mA plus the limit value of I_{IL} for the B input. This permits driving the B input while maintaining full fan-out capability.

NOTE 3: I_{CC} is measured with all outputs open, both R₀ inputs grounded following momentary connection to 4.5 V, and all other inputs grounded.

switching characteristics, V_{CC} = 5 V, T_A = 25°C

PARAMETER ^o	FROM (INPUT)	TO (OUTPUT)	TEST CONDITIONS	'290			'293			UNIT
				MIN	TYP	MAX	MIN	TYP	MAX	
f _{max}	A	Q _A	C _L = 15 pF, R _L = 400 Ω, See Note 4	32	42		32	42	MHz	
	B	Q _B		16			16			
τ _{PLH}	A	Q _A		10	16		10	16	ns	
τ _{PHL}		Q _D		12	18		12	18		
τ _{PLH}	A	Q _D		32	48		46	70	ns	
τ _{PHL}		Q _B		34	50		46	70		
τ _{PLH}	B	Q _B		10	16		10	16	ns	
τ _{PHL}		Q _C		14	21		14	21		
τ _{PLH}	B	Q _C		21	32		21	32	ns	
τ _{PHL}		Q _D		23	35		23	35		
τ _{PLH}	B	Q _D		21	32		34	51	ns	
τ _{PHL}		Q _B , Q _C		23	35		34	51		
τ _{PHL}	Set-to-0	Any		26	40		26	40	ns	
τ _{PLH}	Set-to-9	Q _A , Q _D		20	30				ns	
τ _{PHL}		Q _B , Q _C	26	40						

^of_{max} ≡ maximum count frequency

τ_{PLH} ≡ propagation delay time, low-to-high-level output

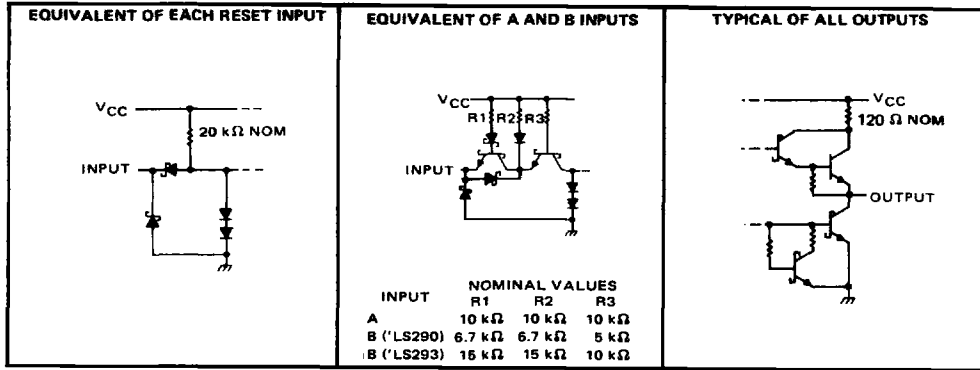
τ_{PHL} ≡ propagation delay time, high-to-low-level output

NOTE 4: Load circuit and voltage waveforms are the same as those shown for the '90A and '93A, page 3-10.

TYPES SN54LS290, SN54LS293, SN74LS290, SN74LS293 DECADE AND 4-BIT BINARY COUNTERS

REVISED OCTOBER 1976

schematics of inputs and outputs



absolute maximum ratings over operating free-air temperature range (unless otherwise noted)

Supply voltage, V_{CC} (see Note 5)	7 V
Input voltage: R inputs	7 V
A and B inputs	5.5 V
Operating free-air temperature range: SN54LS290, SN54LS293	-55°C to 125°C
SN74LS290, SN74LS293	0°C to 70°C
Storage temperature range	-65°C to 150°C

NOTE 5: Voltage values are with respect to network ground terminal.

recommended operating conditions

		SN54LS*			SN74LS*			UNIT		
		MIN	NOM	MAX	MIN	NOM	MAX			
Supply voltage, V_{CC}		4.5	5	5.5	4.75	5	5.25	V		
High-level output current, I_{OH}		-400			-400			μA		
Low-level output current, I_{OL}		4			8			mA		
Count frequency, f_{count}	A input	0	32	0	32			MHz		
	B input	0	16	0	16					
Pulse width, t_w	A input	15			15			ns		
	B input	30			30					
	Reset inputs	15			15					
Reset inactive-state setup time, t_{SU}		25			25			ns		
Operating free-air temperature, T_A		-55			125			0	70	°C

TYPES SN54LS290, SN54LS293, SN74LS290, SN74LS293

DECADE AND 4-BIT BINARY COUNTERS

REVISED OCTOBER 1978

electrical characteristics over recommended operating free-air temperature range (unless otherwise noted)

PARAMETER	TEST CONDITIONS†	SN54LS			SN74LS			UNIT	
		MIN	TYP‡	MAX	MIN	TYP‡	MAX		
V _{IH} High-level input voltage		2			2			V	
V _{IL} Low-level input voltage				0.7			0.8	V	
V _{IK} Input clamp voltage	V _{CC} = MIN, I _I = -18 mA			-1.5			-1.5	V	
V _{OH} High-level output voltage	V _{CC} = MIN, V _{IH} = 2 V, V _{IL} = V _{IL} max, I _{OH} = -400 µA	2.5	3.4		2.7	3.4		V	
V _{OL} Low-level output voltage	V _{CC} = MIN, V _{IH} = 2 V, V _{IL} = V _{IL} max			0.25 0.4			0.25 0.4	V	
I _I Input current at maximum input voltage	Any reset	V _{CC} = MAX, V _I = 7 V			0.1			0.1	mA
	A input	V _{CC} = MAX, V _I = 5.5 V			0.2			0.2	
	B of 'LS290 B of 'LS293	V _{CC} = MAX, V _I = 5.5 V			0.4			0.4	
I _{IH} High-level input current	Any reset	V _{CC} = MAX, V _I = 2.7 V			20			20	µA
	A input	V _{CC} = MAX, V _I = 2.7 V			40			40	
	B of 'LS290 B of 'LS293	V _{CC} = MAX, V _I = 2.7 V			80			80	
I _{IL} Low-level input current	Any reset	V _{CC} = MAX, V _I = 0.4 V			-0.4			-0.4	mA
	A input	V _{CC} = MAX, V _I = 0.4 V			-2.4			-2.4	
	B of 'LS290 B of 'LS293	V _{CC} = MAX, V _I = 0.4 V			-3.2			-3.2	
I _{OS} Short-circuit output current‡	V _{CC} = MAX	-20	-100	-20	-100			mA	
I _{CC} Supply current	V _{CC} = MAX, See Note 3	'LS290	9	15	9	15		mA	
		'LS293	9	15	9	15		mA	

† For conditions shown as MIN or MAX, use the appropriate value specified under recommended operating conditions.

‡ All typical values are at V_{CC} = 5 V, T_A = 25°C.

§ Not more than one output should be shorted at a time, and duration of the short-circuit should not exceed one second.

¶ Q_A outputs are tested at specified I_{OL} plus the limit value of I_{IL} for the B input. This permits driving the B input while maintaining full fan-out capability.

NOTE 3: I_{CC} is measured with all outputs open, both R_D inputs grounded following momentary connection to 4.5 V, and all other inputs grounded.

switching characteristics, V_{CC} = 5 V, T_A = 25°C

PARAMETER ^o	FROM (INPUT)	TO (OUTPUT)	TEST CONDITIONS	'LS290			'LS293			UNIT
				MIN	TYP	MAX	MIN	TYP	MAX	
f _{max}	A	Q _A	C _L = 15 pF, R _L = 2 kΩ, See Note 6	32	42		32	42		MHz
	B	Q _B		16			16			
t _{PLH}	A	Q _A		10	16		10	16		ns
				12	18		12	18		
t _{PHL}	A	Q _D		32	48		46	70		ns
				34	50		46	70		
t _{PLH}	B	Q _B		10	16		10	16		ns
				14	21		14	21		
t _{PHL}	B	Q _C		21	32		21	32		ns
				23	35		23	35		
t _{PLH}	B	Q _D		21	32		34	51		ns
				23	35		34	51		
t _{PHL}	Set-to-0	Any		26	40		26	40		ns
				20	30					
t _{PLH}	Set-to-9	Q _A , Q _D	20	30					ns	
			26	40						
t _{PHL}	Set-to-9	Q _B , Q _C	26	40					ns	

^o f_{max} ≡ maximum count frequency

t_{PLH} ≡ propagation delay time, low to high level output

t_{PHL} ≡ propagation delay time, high to low level output

NOTE 6: Load circuit and voltage waveforms are the same as those shown for the 'LS90 and 'LS93, pages 7-80.