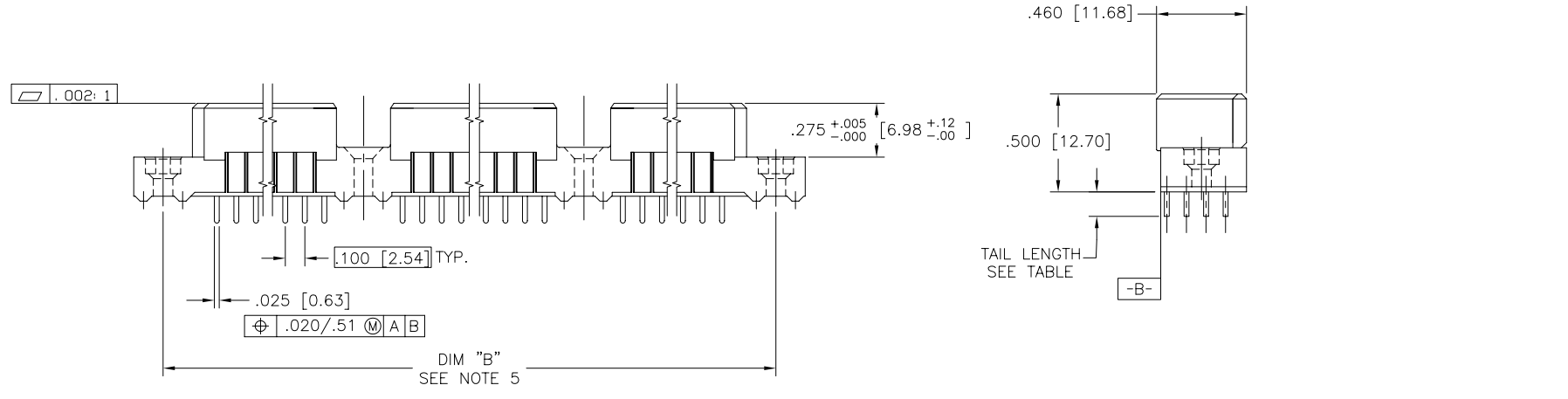
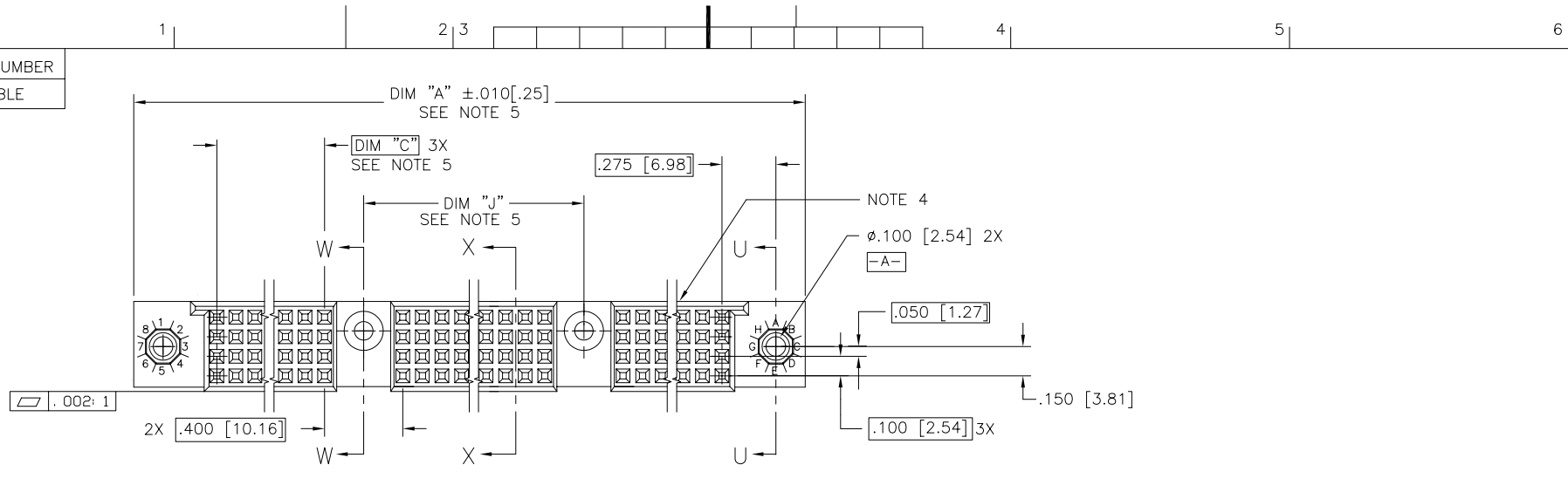


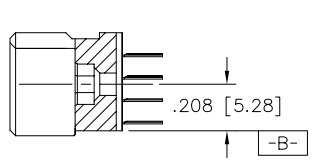
PRODUCT NUMBER
SEE TABLE



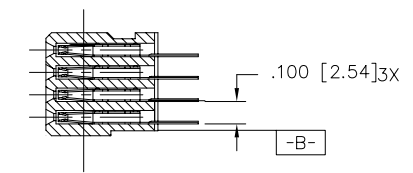
Copyright FCI

mat'l. code SEE NOTE 3		surface ISO 1302 ✓		tolerance ISO 406 ISO 1101		projection ⊕		product family HPC	
ltr G		ecn no V40886		date 7/22/94		tolerances unless otherwise specified angles linear .XX±.01/.3		title 4 ROW VERTICAL RECEPTACLE	
H		V41291		9/8/94		.xxx±.005/.13		SOLDER TO BOARD, 2 GUIDE PINS	
J		V50348		6/15/95		.xxxx±.0020/.05		scale 1:1	
K		V90651		4/8/99		dr S.ROYER 8/7/91		dwg no sheet 1 of 3 size	
L		V00258		1/21/00		enr S.CLARK 8/7/91		50328 A3	
M		V05-0968		10/20/05		chr S.CLARK 8/14/91		type Product Customer Drawing	
N		M06-0260		7/07/06		appd S.CLARK 8/14/91			
sheet index		revision		N N N					
sheet		sheet		1 2 3					

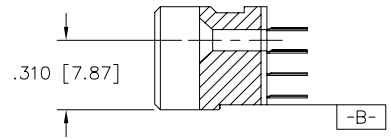
PRODUCT NUMBER
SEE TABLE



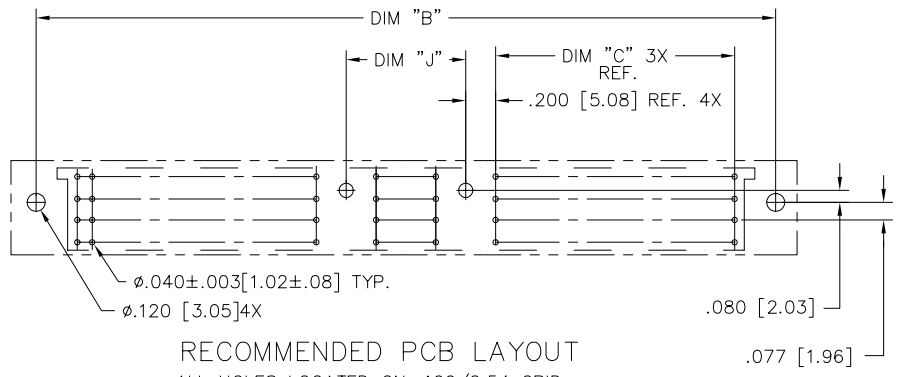
SECTION U-U



SECTION X-X



SECTION W-W



RECOMMENDED PCB LAYOUT
ALL HOLES LOCATED ON .100/2.54 GRID
UNLESS OTHERWISE SPECIFIED

mat'l. code		surface ISO 1302 ✓		tolerance ISO 406 ISO 1101		projection ⊕		product family HPC	
ltr	ecn	no	dr	date		tolerances unless otherwise specified		title	
N						angles	linear	4 ROW VERTICAL RECEPTACLE	
						0°±2'	.xx±.01/.3 .xxx±.005/.13 .xxxx±.0020/.051	SOLDER TO BOARD, 2 GUIDE PINS	
						dr	S.ROYER	8/7/91	dwg no
						enr	S.CLARK	8/7/91	sheet 2 of 3 size
						chr	S.CLARK	8/14/91	50328
						appd	S.CLARK	8/14/91	A3
sheet index		revision sheet						type Product Customer Drawing	

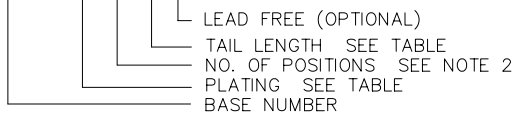


Copyright FCI

PRODUCT NUMBER	NUMBER OF POSITIONS SEE NOTE 2	TAIL LENGTH	CONTACT PLATING
50328-1YYYE	YYY	.125±.010/3.18±0.25	30u"/.76u Au
50328-1YYYF	YYY	.145±.010/3.68±0.25	30u"/.76u Au
50328-1YYYH	YYY	.180±.010/4.57±0.25	30u"/.76u Au
50328-1YYYZ	YYY	.220±.010/5.59±0.25	30u"/.76u Au
50328-3YYYE	YYY	.125±.010/3.18±0.25	50u"/1.25u Au
50328-3YYYF	YYY	.145±.010/3.68±0.25	50u"/1.25u Au
50328-3YYYH	YYY	.180±.010/4.57±0.25	50u"/1.25u Au
50328-3YYYZ	YYY	.220±.010/5.59±0.25	50u"/1.25u Au
50328-5YYYE	YYY	.125±.010/3.18±0.25	30u"/.76u GXT
50328-5YYYELF	YYY	.125±.010/3.18±0.25	30u"/.76u GXT
50328-5YYYF	YYY	.145±.010/3.68±0.25	30u"/.76u GXT
50328-5YYYFLF	YYY	.145±.010/3.68±0.25	30u"/.76u GXT
50328-5YYYH	YYY	.180±.010/4.57±0.25	30u"/.76u GXT
50328-5YYYHLF	YYY	.180±.010/4.57±0.25	30u"/.76u GXT
50328-5YYYZ	YYY	.220±.010/5.59±0.25	30u"/.76u GXT
50328-5YYYZLF	YYY	.220±.010/5.59±0.25	30u"/.76u GXT

NOTES:

① PRODUCT NUMBERING CODE:
50328 - X YYY Z LF



② THIS PRODUCT IS CONFIGURED IN SIZES OF 10 THRU 80 COLUMNS IN INCREMENTS OF ONE. i.e.: 10,11,12,13,.....79,80.

③ HOUSING MATERIAL: GLASS AND MINERAL FILLED HIGH TEMP. THERMOPLASTIC. FLAME RETARDANT PER UL94V-0. COLOR: BLACK.
CONTACT MATERIAL: BeCu

④ MANUFACTURE'S NAME, P/N AND LOT CODE TO APPEAR ON THIS SURFACE AS PER BUS-12-108.

⑤ LENGTH FORMULAS
DIM A= .100/2.54 X NO. OF COLUMNS + 1.35/34.3
DIM B= .100/2.54 X NO. OF COLUMNS + 1.050/26.67
DIM C= .100/2.54 X NO. OF COLUMNS DIVIDED BY 3 - .100/2.54
DIM J= .100/2.54 X NO. OF COLUMNS DIVIDED BY 3 - .300/7.62

6. THIS PRODUCT (WITH "LF" SUFFIX) MEETS EUROPEAN UNION DIRECTIVES AND OTHER COUNTRY REGULATIONS AS DESCRIBED IN GS-22-008.

7. THIS HOUSING WILL WITHSTAND EXPOSURE TO 260° C PEAK TEMPERATURE FOR 10-30 SECONDS IN A CONVECTION INFRA-RED OR VAPOR PHASE REFLOW OVEN.



FCIconnect.com

Copyright FCI

mat'l. code		surface ISO 1302 ✓		tolerance ISO 406 ISO 1101		projection ⊕		product family HPC	
ltr	ecn	no	dr	date		tolerances unless otherwise specified		title	
N						angles	linear	4 ROW VERTICAL RECEPTACLE	
						0°±2'	.xx±.01/.3 .xxx±.005/.13 .xxxx±.0020/.051	SOLDER TO BOARD, 2 GUIDE PINS	
						dr	S.ROYER	8/7/91	scale 1:1
						engr	S.CLARK	8/7/91	dwg no
						chr	S.CLARK	8/14/91	sheet 3 of 3 size
						appd	S.CLARK	8/14/91	50328 A3
sheet index		revision sheet						type Product Customer Drawing	

form: A3