

Technical Specifications

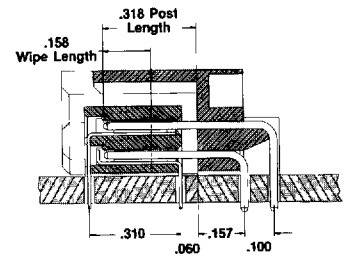
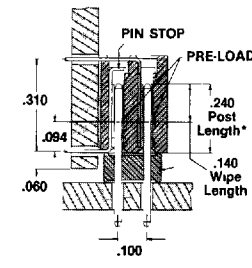
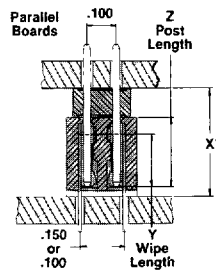
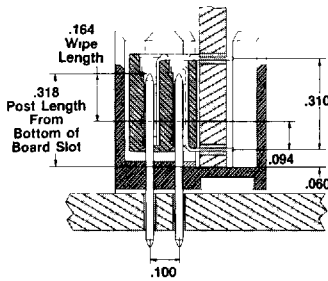
ELCO

Technical Data

Series
8251
8352
8275
8281
8381

Basic grid	100 (2.54) x 100 (2.54)
Insertion Force	1-6 oz per contact
Withdrawal force	75 oz min. per contact
Contact resistance	12 milliohms max. for gold plating
Current rating	3 amperes continuous current shall not cause a temperature rise greater than 30°C above ambient
Insulation resistance	5,000 megohms min. at 500 VDC
Dielectric withstanding voltage	1,000 VAC ms at sea level
Operating temperature	-55°C to +105°C
Insulator material	Thermoplastic polyester, 94 V-O, UL rated
Socket contact material	Phosphor bronze
Pin contact material	Phosphor bronze
Wrap post dimension	.025 x .025
Push-out force of post in insulator	8251 - 3 lbs., 8352 - 2 lbs., Straight post headers - 3 lbs., Compliant post headers - 1 lb.
Contact plating	Gold over nickel (see table this page) tin/lead

Design Aids



Max. Post Length .300
 Min. Recommended Post Length .170

STANDARD	X	Y	Z
265	.365	.178	.240
.335	.435	.168	.300

*This dimension can be accommodated to any size between 450 max. and 265 min. Tooling charges may apply. Consult factory for details.

Features
Pin Stop.
Preload - to reduce insertion force & to insure interface alignment

PLATING DESCRIPTION					
MATING AREA	30 Gold	15 Gold	30 Gold	15 Gold	100/200 Tin Lead
TAIL AREA	Flash	Flash	100/200 Tin Lead	100/200 Tin Lead	100/200 Tin Lead

U.L. Recognized

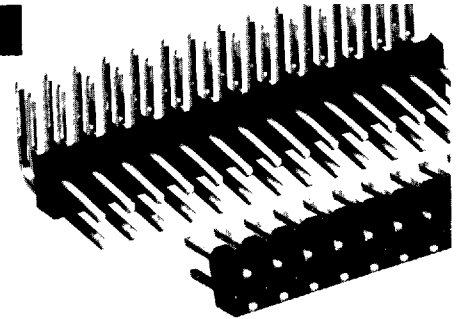
E27610 (M)

Consult factory for additional plating

Unshrouded Dual Row

Ordering Code

Typical Example	00	8275	002	231	526
SERIES NUMBER	_____				
NUMBER OF CONTACTS	_____				
002 thru 100					
CONTACT CODE	_____				



CODE NO.	DESCRIPTION	G DIM.	H DIM.	J DIA.
110	Solder Tail-Straight Contact	.318 (8,08)	.125 (3,18)	.035 (0,89)
231	Solder Tail-Straight	.230 (5,84)	.120 (3,05)	.035 (0,89)
000	Solder Tail-Right Angle Contact	.240 (6,10)	.092 (2,34)	.035 (0,89)
000	Solder Tail-Right Angle Contact	.300 (7,62)	.092 (2,34)	.035 (0,89)

NUMBER OF POSITIONS	B
2	—
4	100 2 54
6	200 5.08
8	300 7 62
10	400 10 16
12	500 12 70
14	600 15 24
16	700 17 78
18	800 20 32
20	900 22 86
22	1 000 25 40
24	1 100 2 794
26	1 200 30 48
28	1 300 33 02
30	1 400 35 56
32	1 500 38 10
34	1 600 40 64
36	1 700 43 18
38	1 800 45 72
40	1 900 48 26
42	2 000 50 80
44	2 100 53 34
46	2 200 55 80

VARIATION CODE

30 Gold	15 Gold	100-200 Tin-Lead	MATING AREA
100-200 Tin-Lead	100-200 Tin-Lead	100-200 Tin-Lead	TAIL AREA
VARIATION CODE			DESCRIPTION
526	576	590	Straight Contact with Insulator .230 & .240 Mating
527	577	591	Straight Contact with Insulator 300 & .318 Mating
853	803	893	Right Angle Contact with Insulator .240 X .092 Mating
854	804	894	Right Angle Contact with Insulator .300 X .092 Mating

Available with Press-Fit Tails.
Additional plating and tail lengths also available.
Please contact factory.

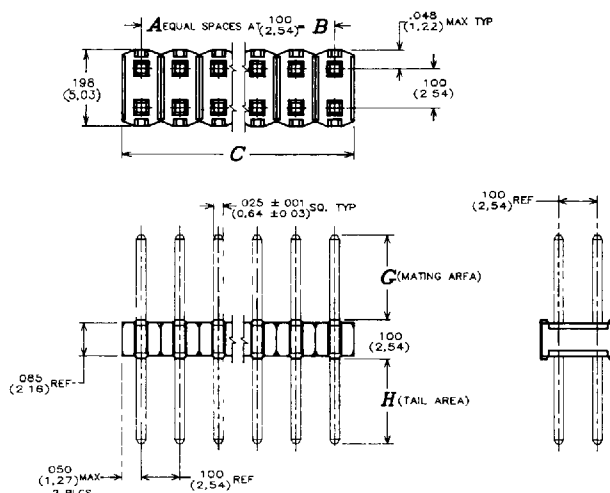
■ Recommended for standard applications. Available through ELCO franchised distributors

Unshrouded Dual Row

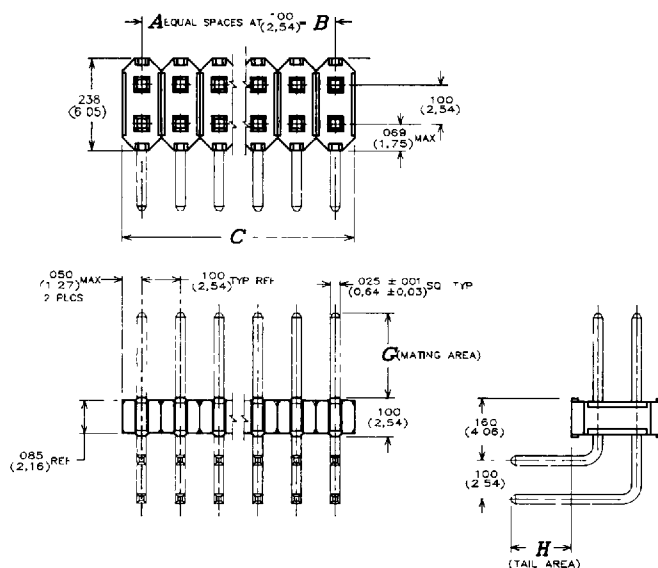
Number of Positions
(continued)

NUMBER OF POSITIONS	B
48	2 300 58 42
50	2 400 60 96
52	2 500 63 50
54	2 600 66 04
56	2 700 68 58
58	2 800 71 12
60	2 900 73 66
62	3 000 76 20
64	3 100 78 74
66	3 200 81 28
68	3 300 83 82
70	3 400 86 36
72	3 500 88 90
74	3 600 91 44
76	3 700 93 98
78	3 800 96 52
80	3 900 99 06
82	4 000 101 60
84	4 100 104 14
86	4 200 106 68
88	4 300 109 22
90	4 400 111 76
92	4 500 114 30
94	4 600 116 84
96	4 700 119 38
098	4 800 121 92
100	4 900 124 46

Straight



Right-Angle



P.C. Board Hole Pattern

