

TABLE 1

ENTRY SPEC	BODY SPEC	CONTACT #1	CONTACT #2
-S-DE (SEE FIG.1)	SSM-XX-S	C-95-01-X	
-D-DE (SEE FIG.1)	SSM-XX-D	C-95-01-X	
-S-TE (SEE FIG.3)	SSM-XX-S	C-95-09-X	
-D-TE (SEE FIG.3)	SSM-XX-D	C-95-09-XXX	
-S-HE (SEE FIG.2)	BCH-XX-S	C-58-05-X	
-D-HE (SEE FIG.2)	BCH-XX-D	C-58-04-X	C-58-03-X
-S-PE (SEE FIG.4)	SSM-XX-S	C-166-10-X	
-D-PE (SEE FIG.4)	SSM-XX-D	C-166-10-X	
-S-DE-BE (SEE FIG.1)	SSM-XX-S-BE	C-95-01-X	
-D-DE-BE (SEE FIG.1)	SSM-XX-D	C-95-01-X	
-S-PE-BE (SEE FIG.4)	SSM-XX-S-BE	C-166-10-X	
-D-PE-BE (SEE FIG.4)	SSM-XX-D	C-166-10-X	

BCS-1XX-XXX-X-XX-XXX

NO. OF POSITIONS  
-01 THRU -50

PLATING SPEC.  
 -T: MATTE TIN IN CONTACT AREA AND SOLDER TAIL  
 -L: LIGHT GOLD IN CONTACT AREA, MATTE TIN TAIL  
 -F: FLASH GOLD  
 -P: GOLD FLASHED PALLADIUM NICKEL IN CONTACT AREA, MATTE TIN TAIL  
 -S: HEAVY GOLD CONTACT AREA, MATTE TIN TAIL  
 -H: HEAVY GOLD FLASH ON TAIL  
 -SM: HEAVY GOLD SELECTIVE, MATTE TIN TAIL (SEE TABLE 1)  
 -TM: MATTE TIN (SEE TABLE 1)  
 -LM: LIGHT GOLD SELECTIVE, MATTE TIN TAIL (SEE TABLE 1)  
 -FM: FLASH GOLD SELECTIVE, MATTE TIN TAIL (SEE TABLE 1)  
 -LTL: LIGHT GOLD IN CONTACT AREA, TIN LEAD TAIL (ONLY AVAILABLE WITH -D-TE ENTRY SPEC ONLY)

POLARIZING OPTION  
 INSERT PK-06-N INTO SPECIFIED POS AND BREAK OFF TAB (NOT AVAILABLE FOR -BE OPTION)

ENTRY SPECIFICATION  
 -DE: DUAL ENTRY (SEE TABLE 1)  
 -TE: TOP ENTRY (SEE TABLE 1)  
 -HE: HORIZONTAL ENTRY (SEE TABLE 1)  
 -PE: PASS-THROUGH ENTRY (SEE TABLE 1)  
 -DE-BE: (SEE TABLE 1)  
 -PE-BE: (SEE TABLE 1)

BODY SPECIFICATION  
 -S: SINGLE ROW (SEE TABLE 1)  
 -D: DOUBLE ROW (SEE TABLE 1)

ALL DIMS. DIFFERENT AS SHOWN, OTHERWISE SAME AS FIGURE 1

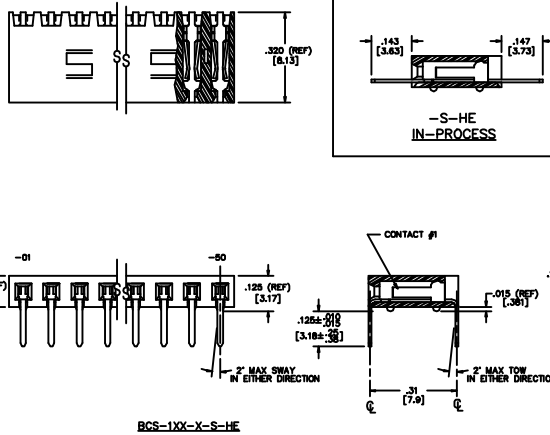
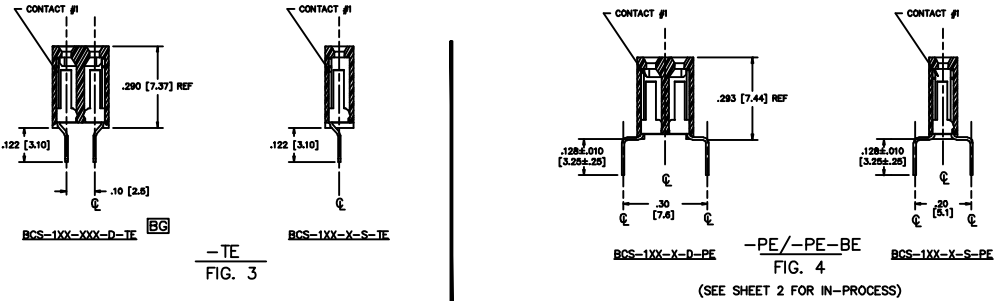
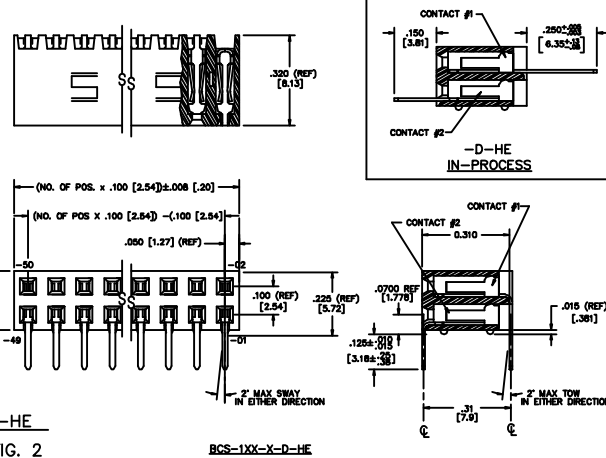


FIG. 2



BCS-1XX-X-D-HE

PROPRIETARY INFO  
 THIS DRAWING IS THE PROPERTY OF SAMTEC CORPORATION. IT IS TO BE USED FOR THE MANUFACTURE OF SAMTEC PRODUCTS ONLY. IT IS NOT TO BE REPRODUCED, COPIED, OR TRANSMITTED IN ANY FORM OR BY ANY MEANS, ELECTRONIC OR MECHANICAL, INCLUDING PHOTOCOPYING, RECORDING, OR BY ANY INFORMATION STORAGE AND RETRIEVAL SYSTEM.

- NOTES:
- PUSHOUT FORCE TO BE: 1 lb. MIN.
  - ⊙ REPRESENTS CRITICAL DIM. FOR STATISTICAL PROCESS CONTROL.
  - CONTACT MATERIAL: PHOSPHOR BRONZE.
  - INSULATOR MATERIAL: BLACK, GLASS-FILLED LCP.
  - [ ] DIMENSIONS ARE IN MILLIMETERS.
  - MINIMUM WALL THICKNESS ON CUT PARTS: .009.
  - CUT PARTS TO BE SYMMETRICAL ABOUT C.
  - 1st POSITION WILL ALWAYS POINT UP ON TOP VIEW AS SHOWN.
  - 1 THROUGH 4 POSITIONS ARE TO BE LAYERED PACKAGED, 5 THROUGH 50 POSITIONS ARE TO BE TUBED FOR THIS PART NUMBER.
  - DAMAGE TO THE CUT SURFACE CAN NOT AFFECT LEAD-IN OF THE CORES.
  - FOR -D AND -D-BE PARTS MAX PIN VARIATION WITHIN EACH ROW AND FROM ADJACENT TAIL TO BE .0060