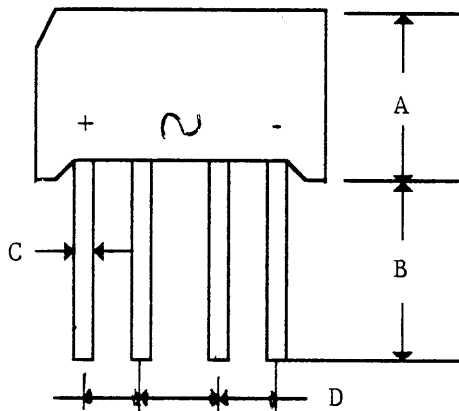


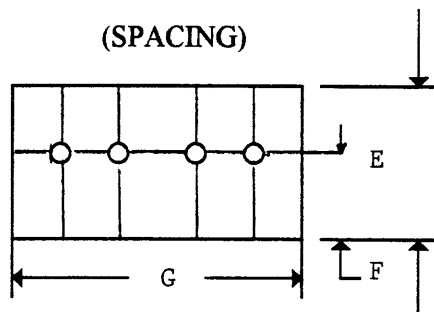
# EDAL INDUSTRIES, INC.

51 COMMERCE STREET\*EAST HAVEN, CONNECTICUT 06512\*TELEPHONE (203)-467-2591\*FAX (203)-469-5928  
 WWW: <http://eemonline.com/edal> INTERNET: [edalind@aol.com](mailto:edalind@aol.com)

## B393-(-)-1 SILICON BRIDGE RECTIFIER



DIM	INCHES		MILLIMETERS	
	MIN	MAX	MIN	MAX
A	0.551	0.590	14.0	15.0
B	0.50		12.7	
C	0.028	0.035	0.71	0.89
D	0.14	0.16	3.60	4.10
E	0.236	0.276	6.0	7.0
F	0.085	0.105	2.16	2.67
G	0.63	0.71	16.0	18.0



### ELECTRICAL SPECIFICATIONS

FOR SINGLE PHASE BRIDGE CIRCUIT

MAXIMUM ALLOWABLE DC OUTPUT CURRENT

@ 50°C AMBIENT TEMPERATURE.....3.0 AMPS

@ 100°C AMBIENT TEMPERATURE.....2.0 AMPS

MAXIMUM ALLOWABLE ONE CYCLE SURGE CURRENT.....60 AMPS

MAXIMUM FULL LOAD FORWARD VOLTAGE DROP @ 1.0 AMP.....1.0 V/SECTION

MAXIMUM REVERSE CURRENT

@ 25°C FULL CYCLE AVERAGE.....10 uA/SECTION

@ 100°C FULL CYCLE AVERAGE......5mA/SECTION

<u>PART NUMBER</u>	<u>PIV</u>	<u>PART NUMBER</u>	<u>PIV</u>
B393-5-1	50	B393-60-1	600
B393-10-1	100	B393-80-1	800
B393-20-1	200	B393-100-1	1000
B393-40-1	400	B393-120-1	1200

**DIODES \* BRIDGES \* POWER RECTIFIERS \* HIGH VOLTAGE ASSEMBLIES \*  
 VARISTORS \* MOV'S \* TVS \* SPECIAL DESIGNS**