

ZONE	REV	SCR NUMBER	DESCRIPTION	BY	DATE	APPROVED
ALL	-	DSMH-726HWR.VER01	NEW RELEASE	HCL-SD	04/12/2007	D.SMITH
	A	MCHU-76HMLS.VER02	KEEP OUT ZONES ADDED	HCL-AP	10/09/2007	D.SMITH
	B	CSAS-83KKVW.VER01	ADDED NEW PART NUMBERS FOR NEW PLATING CODES IN ASSEMBLY PART NUMBER ASSIGNMENT TREE. MODIFIED NOTE 4 AND 7. REMOVED REVISION COLUMN IN TABLE 1. CORRECTED NOTES SEQUENCE NUMBERS.	HCL-MH	03/12/2010	C.SAMMIS

LEFT POLARIZING BACKPLANE MODULE
ASSEMBLY PART NUMBER ASSIGNMENT

335 - X 1 XX - X X X

LOAD
4 = STANDARD LOAD (7)
7 = CUSTOM LOAD, LEADED
8 = CUSTOM LOAD, LEAD FREE
L = CUSTOM LOAD, LEADED, ADVANCED PLATING
N = CUSTOM LOAD, LEAD FREE, ADVANCED PLATING

MINIMUM PIN WIPE LENGTH, SEE DETAIL U
3 = 1.00 mm WIPE
4 = 2.00 mm WIPE
5 = 3.00 mm WIPE

NUMBER OF COLUMNS
05 = 5 COLUMN MODULE
10 = 10 COLUMN MODULE
25 = 25 COLUMN MODULE

PLATING CODE (4)
0 = 735 4 = 804
1 = 732 5 = 803
2 = 769 6 = 806
3 = 768 7 = 805

POLARIZING PIN LOCATION CODE (SEE TABLE 2)

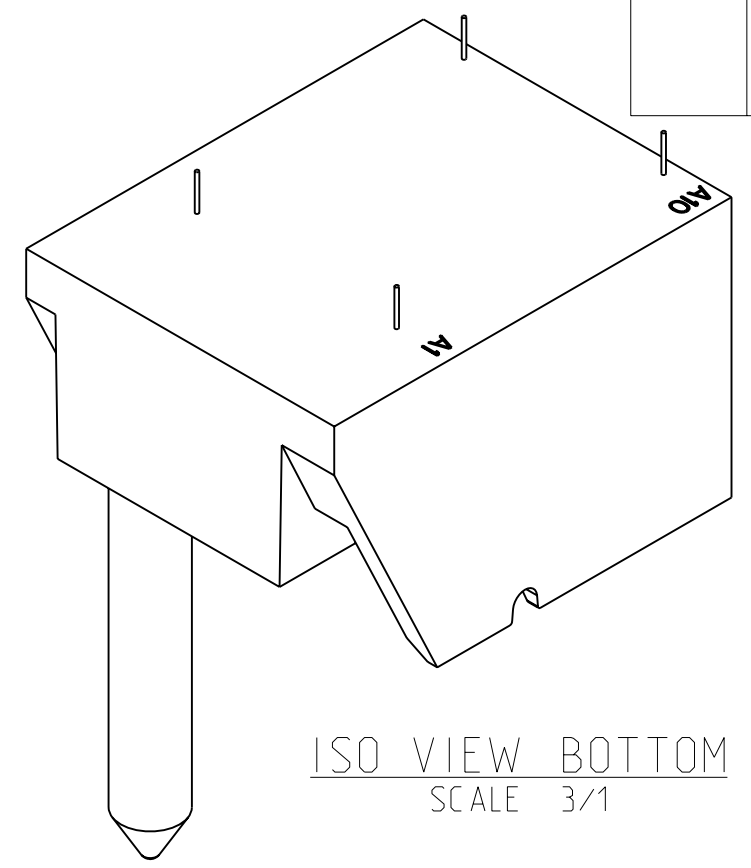
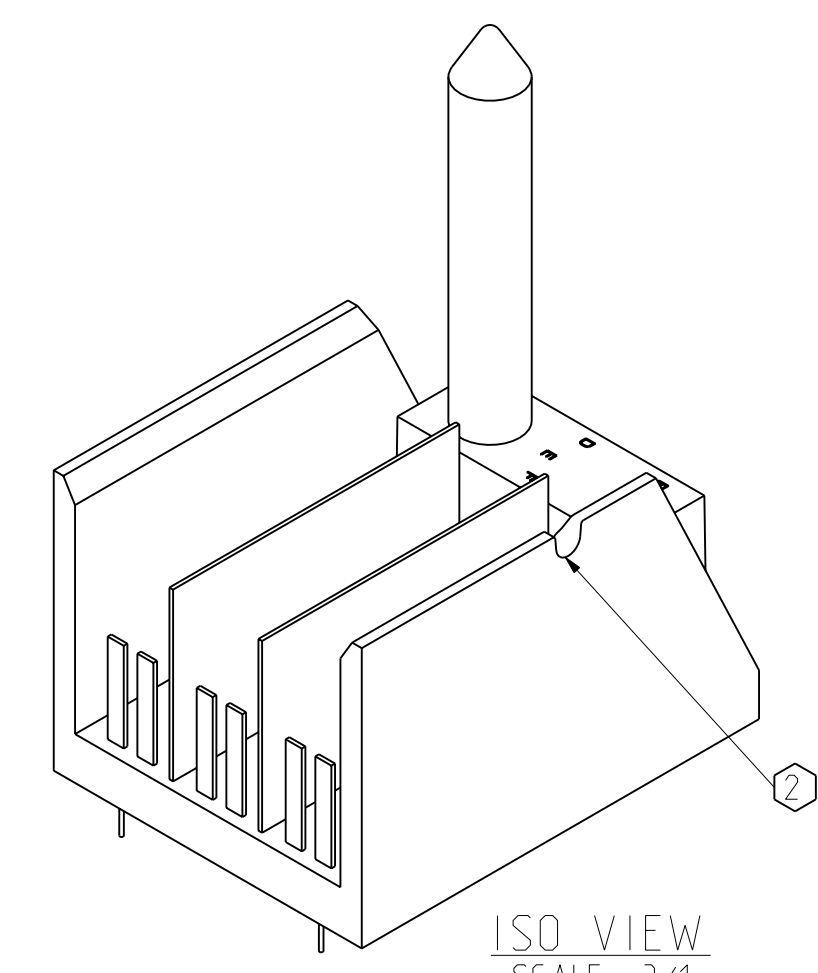
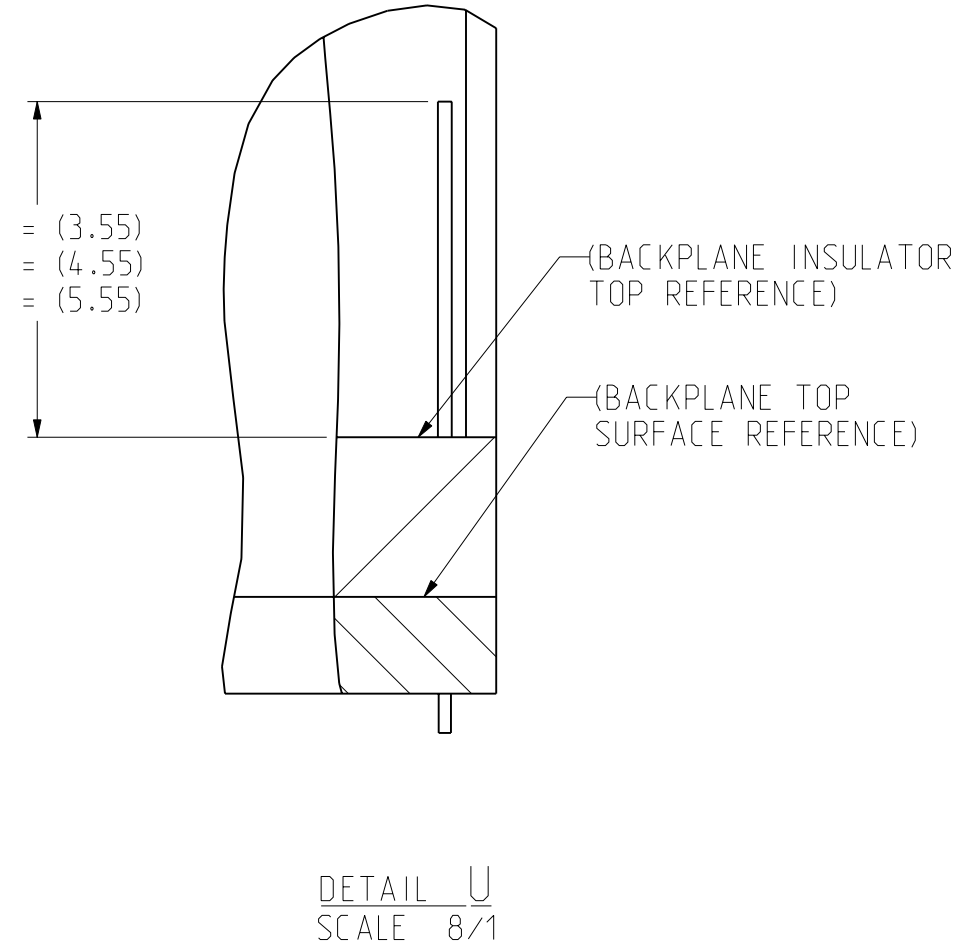
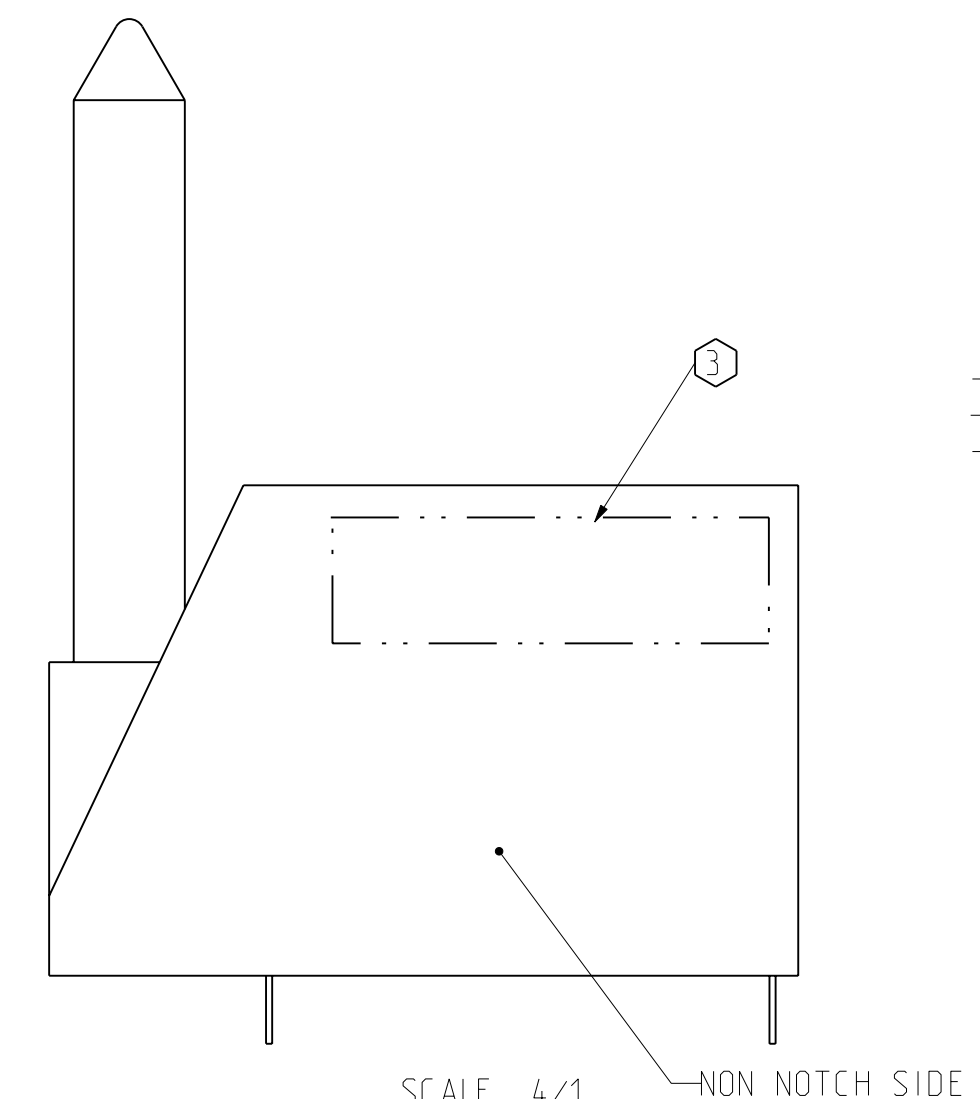
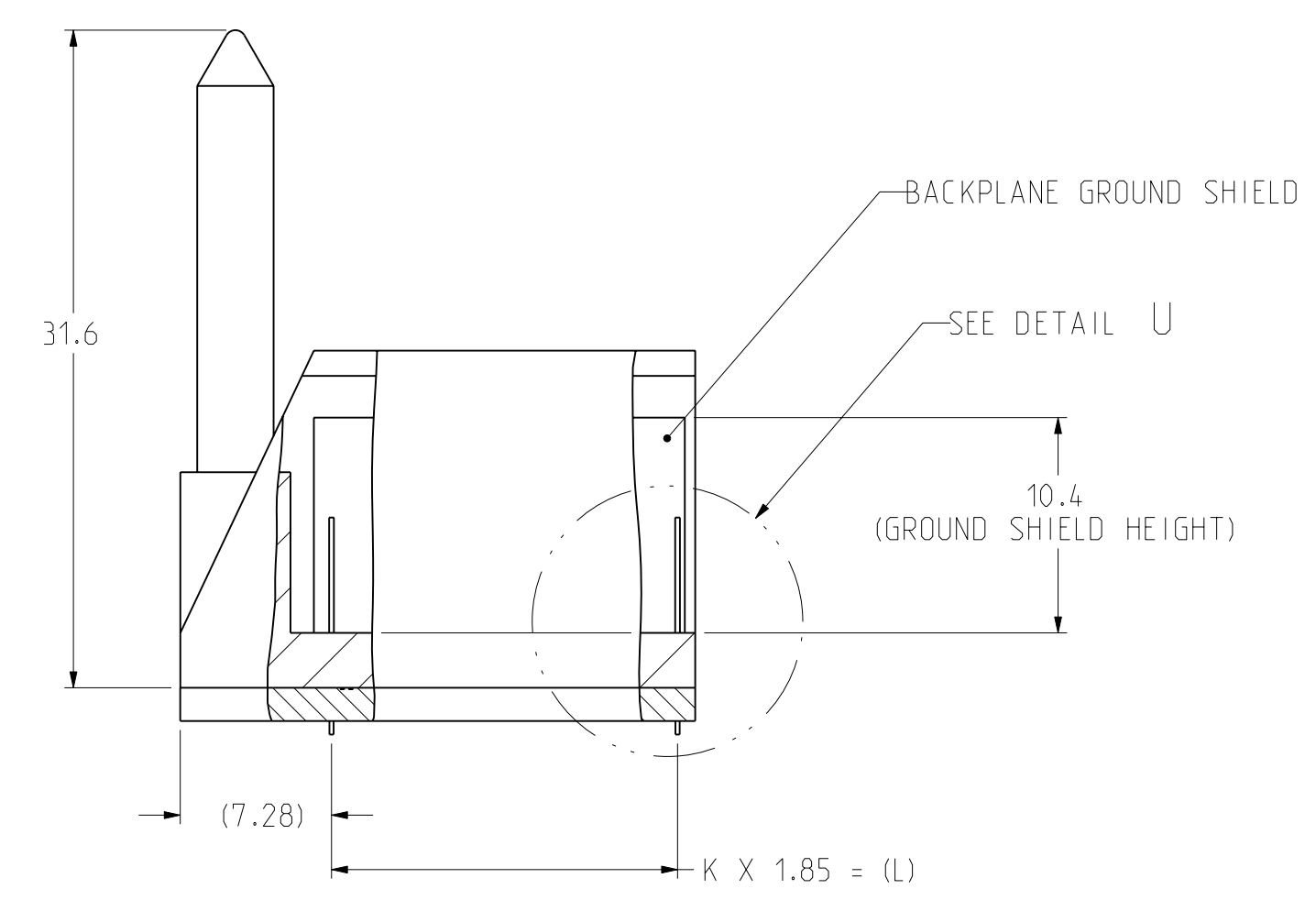
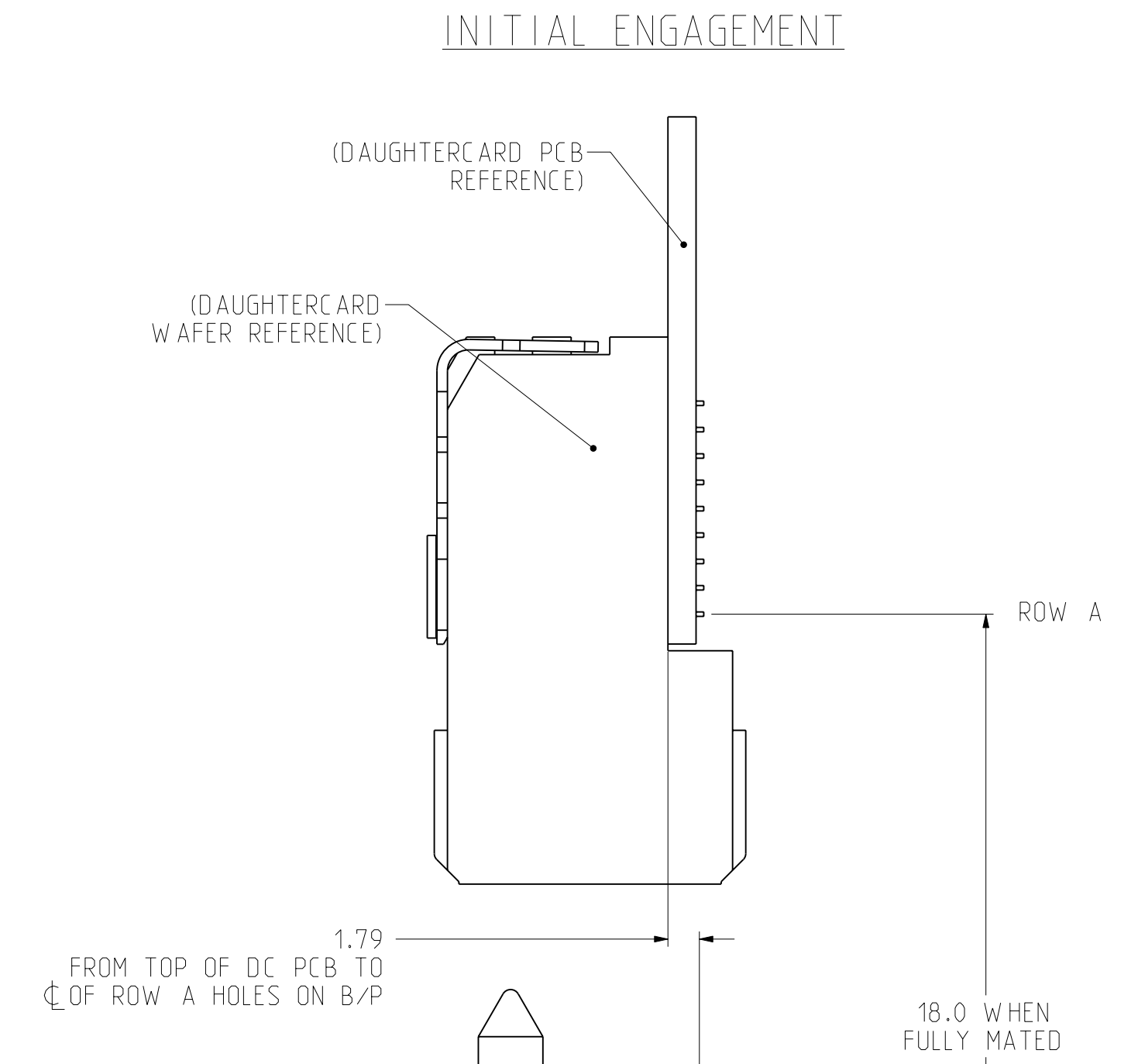
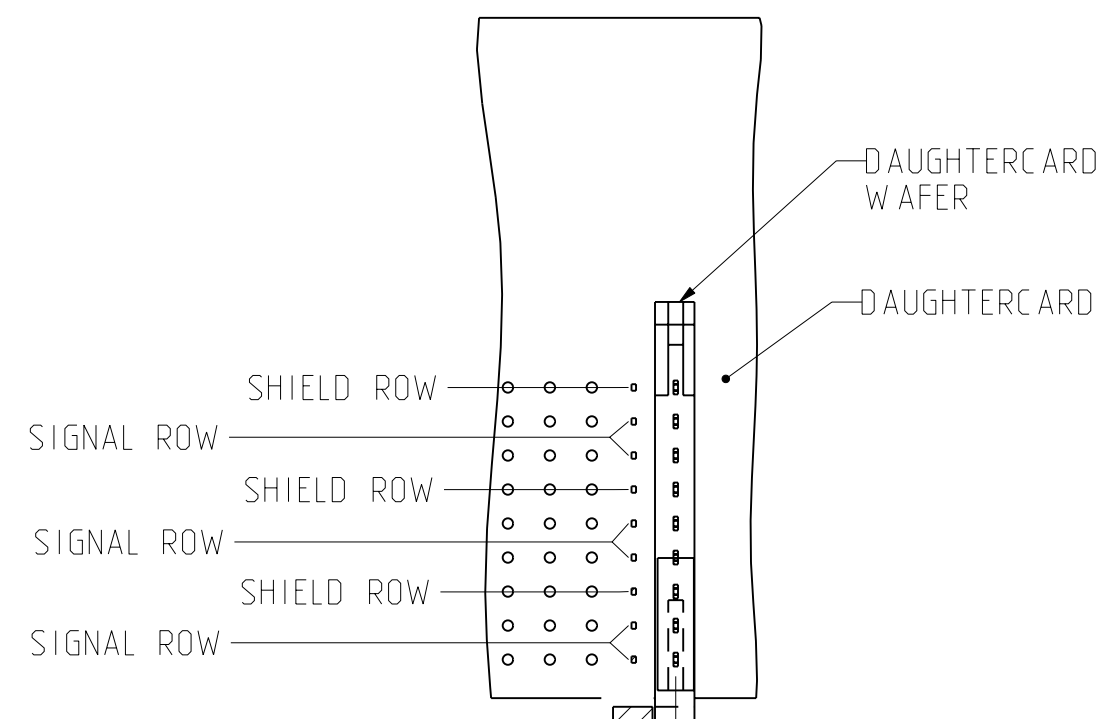
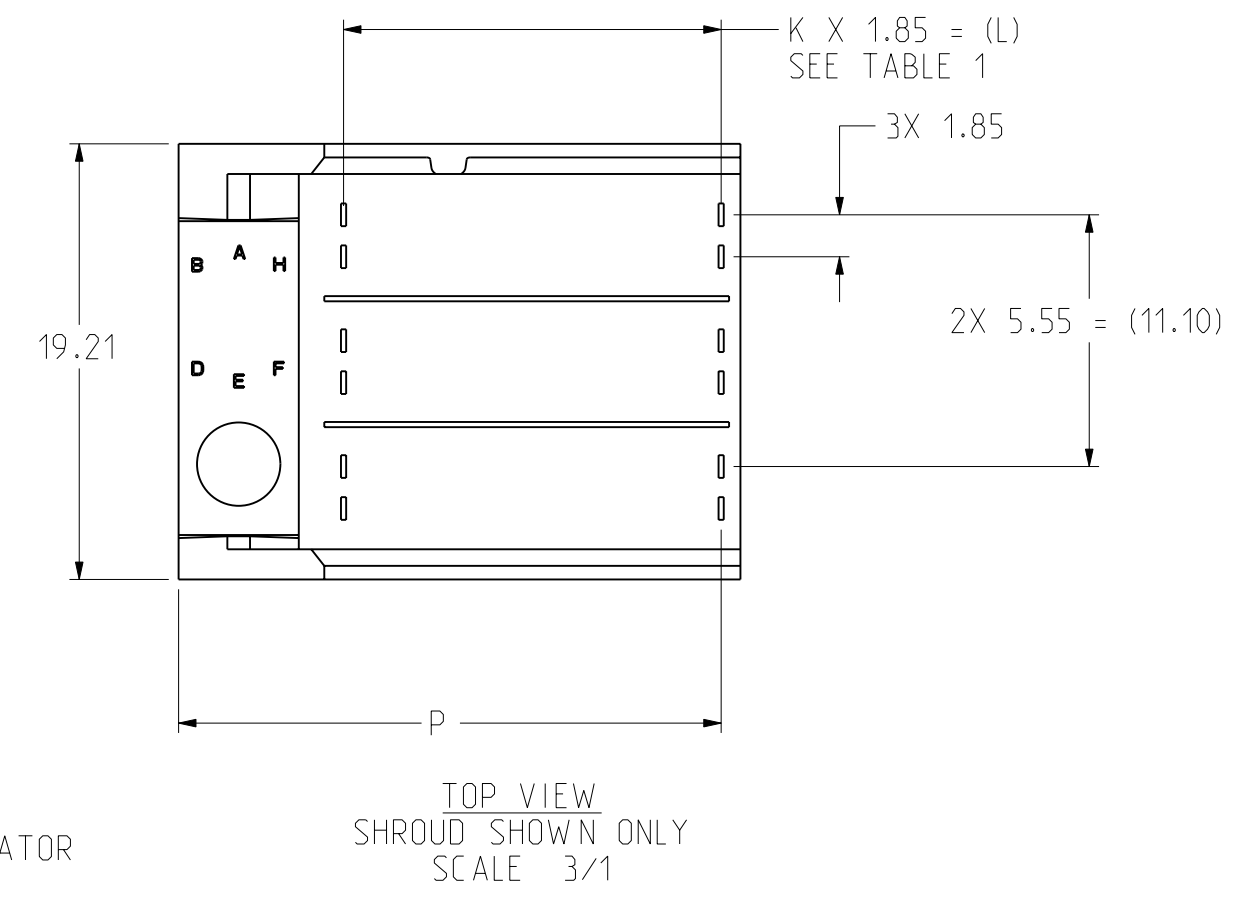


TABLE 1

ASSEMBLY PART NUMBER	K	(L)	P	TOTAL NUMBER OF DIFFERENTIAL PAIRS
335-X105-XXX	4	(7.4)	15.53	15
335-X105-XXX	9	(16.65)	24.78	30
335-X105-XXX	24	(44.40)	52.53	75

TABLE 2

PART NUMBER 335-X1XX-(XXX)	-0XX	-AXX	-BXX	-CXX	-DXX	-EXX	-FXX	-GXX	-HXX
POLARIZING PIN ORIENTATION									



- NOTES:
- IF 4TH DIGIT OF THE PART NUMBER IS 7 OR 8 OR L OR N (CUSTOM PART), DIGIT 5 THROUGH 10 DO NOT FOLLOW THE PARADIGM IN TABLE.
 - USE MATING GAUGE PART NUMBER XXX-XXXX-XXX AFTER INSERTION ONTO BOARD TO CHECK POSITION OF BLADES.
 - FOR REPAIR PROCEDURE FOR SIGNAL BLADE, SEE TB-2099.
 - 9TH DIGIT OF PART NUMBER IDENTIFIES PLATING:
735 - Ni SULFAMATE, STANDARD GOLD, LEADED
732 - Ni SULFAMATE, HIGH GOLD, LEADED
769 - Ni SULFAMATE, STANDARD GOLD, LEAD-FREE
768 - Ni SULFAMATE, HIGH GOLD, LEAD-FREE
804 - NANO Ni, STANDARD GOLD, LEADED
803 - NANO Ni, HIGH GOLD, LEADED
806 - NANO Ni, STANDARD GOLD, LEAD-FREE
805 - NANO Ni, HIGH GOLD, LEAD-FREE
 - PART MARKING AS FOLLOWS:
LINE 1: "ATCS" AND DATECODE (ATCS YYWW).
LINE 2: MODULE PART NUMBER (335-###-###).
LINE 3: WORK ORDER NUMBER (###*#####), WHERE "*" DENOTES MANUFACTURING LOCATION.
 - NOTCH DESIGNATES "ROW A" SIDE OF SHROUD, NOTCH FEATURE ON OPPOSITE SIDE FROM PART MARKING.
 - REFER TO TB-2085 FOR GbX PRODUCT SPECIFICATIONS.

TOLERANCES	DESIGN	DATE	DESIGNER	Amphenol TCS A Division of Amphenol Corporation 200 Innovative Way, Nashua, NH 03062 803.879.3000	
0.0	±0.25	07/17/2006	M.DEROSA	PART NO.	SEE PART NUMBER TREE
0.00	±0.13	07/18/2006	M.DEROSA	DRAWING NO.	C-335-4105-500
0.000	±	07/18/2006	B.RICHARD	ProvE Type	51-P1031-CU-HS-BP-SHRD-LTPOL-05 ProvE DRAWING: C-335-4105-500
ANGLES	±	04/12/2007	D.SMITH	SIZE	D SCALE 1/1

UNLESS OTHERWISE SPECIFIED DIMENSIONS ARE IN MM. DECIMAL MARKER IS A PERIOD.
INTERPRET PER ASME Y14.5M
CODE IDENT 31413

CUSTOMER USE
DRAWING

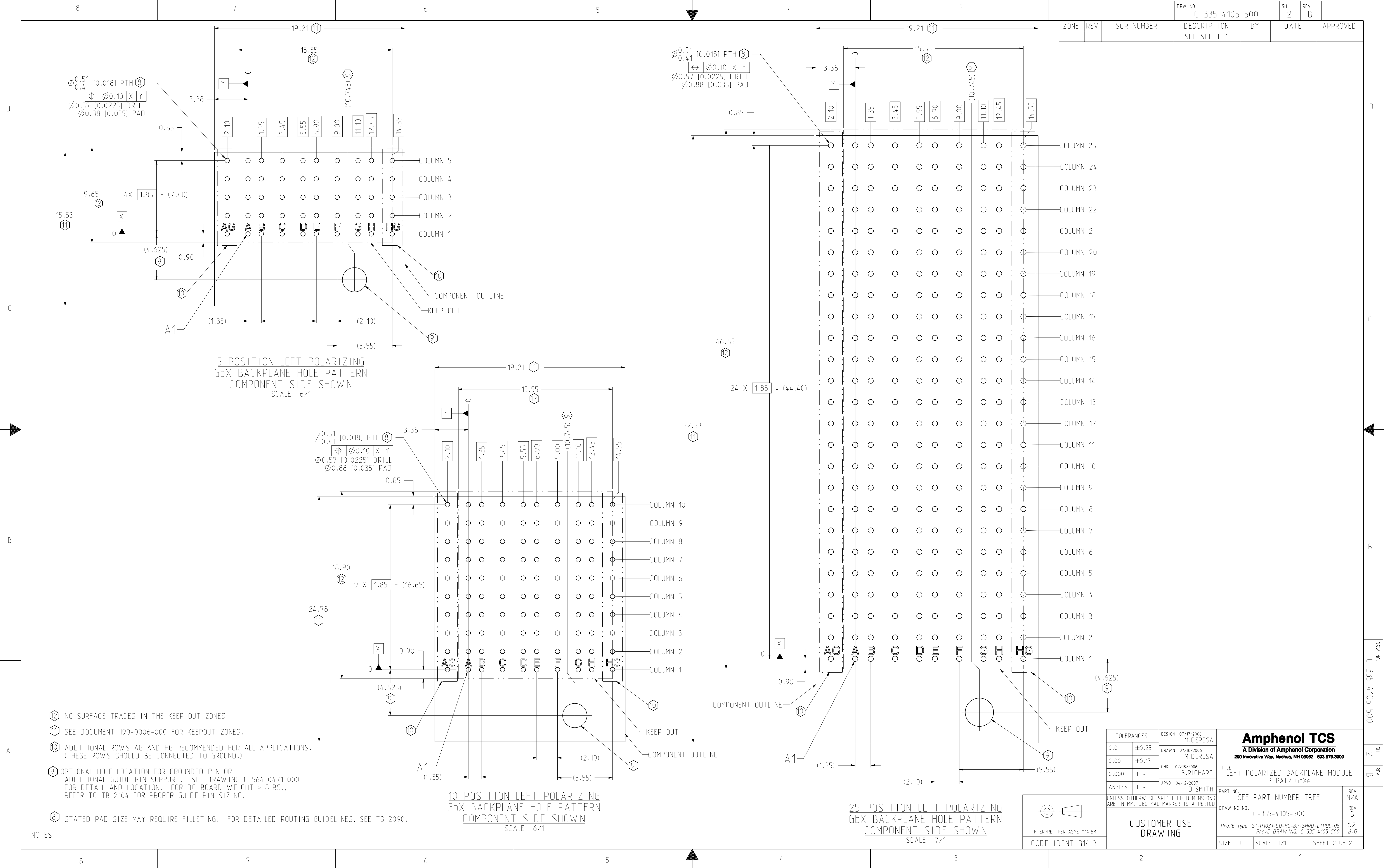
REV	DATE	BY	APP
1			

C-335-4105-500

SH 1 REV B

SHEET 1 OF 2

ZONE	REV	SCR NUMBER	DESCRIPTION	BY	DATE	APPROVED
			SEE SHEET 1			



5 POSITION LEFT POLARIZING
GbX BACKPLANE HOLE PATTERN
COMPONENT SIDE SHOWN
SCALE 6/1

10 POSITION LEFT POLARIZING
GbX BACKPLANE HOLE PATTERN
COMPONENT SIDE SHOWN
SCALE 6/1

25 POSITION LEFT POLARIZING
GbX BACKPLANE HOLE PATTERN
COMPONENT SIDE SHOWN
SCALE 7/1

- 12 NO SURFACE TRACES IN THE KEEP OUT ZONES
- 11 SEE DOCUMENT 190-0006-000 FOR KEEPOUT ZONES.
- 10 ADDITIONAL ROWS AG AND HG RECOMMENDED FOR ALL APPLICATIONS. (THESE ROWS SHOULD BE CONNECTED TO GROUND.)
- 9 OPTIONAL HOLE LOCATION FOR GROUNDED PIN OR ADDITIONAL GUIDE PIN SUPPORT. SEE DRAWING C-564-0471-000 FOR DETAIL AND LOCATION. FOR DC BOARD WEIGHT > 8IBS., REFER TO TB-2104 FOR PROPER GUIDE PIN SIZING.
- 8 STATED PAD SIZE MAY REQUIRE FILLETING. FOR DETAILED ROUTING GUIDELINES, SEE TB-2090.

NOTES:

TOLERANCES	DESIGN	07/17/2006	M.DEROSA	Amphenol TCS A Division of Amphenol Corporation 200 Innovative Way, Nashua, NH 03062 603.879.3000
0.0	±0.25	DRAWN	07/18/2006	
0.00	±0.13	CHK	07/18/2006	
0.000	± -	APVD	04/12/2007	
ANGLES	± -	D.SMITH		TITLE LEFT POLARIZED BACKPLANE MODULE 3 PAIR GbXe PART NO. SEE PART NUMBER TREE DRAWING NO. C-335-4105-500 Prov/E Type: SI-P1031-CU-HS-BP-SHRD-LTPOL-05 Prov/E DRAWING: C-335-4105-500 SIZE D SCALE 1/1 SHEET 2 OF 2

INTERPRET PER ASME Y14.5M
CODE IDENT 31413

CUSTOMER USE
DRAWING

C-335-4105-500

SH 2 REV B

1