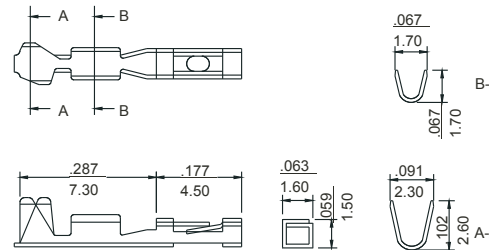


HOW TO ORDER:

W 0 2 6 - 1 0 0 0 - 0 0 X

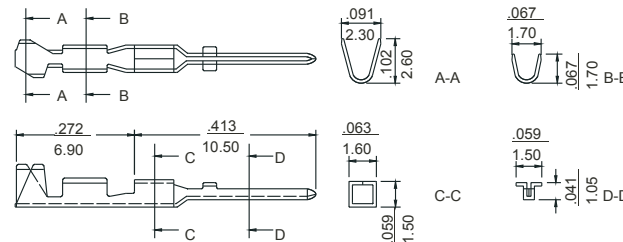
Female Receptacle



HOW TO ORDER:

W 0 2 6 - 2 0 0 0 - 0 0 X

Male Pin



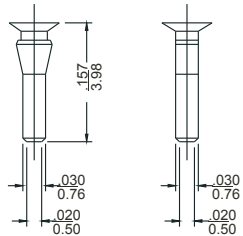
PLATING:
 1 - Tin Plated
 2 - Au Flash
 3 - 10µ" Gold
 4 - 30µ" Gold

Dimensional information - inch/mm

Circuits	Dim. A		Dim. B		Circuits	Dim. A		Dim. B		Circuits	Dim. A		Dim. B	
	inch	mm	inch	mm		inch	mm	inch	mm		inch	mm	inch	mm
1			0.100	2.54	15	1.400	35.56	1.500	38.10	29	2.800	71.12	2.900	73.66
2	0.100	2.54	0.200	5.08	16	1.500	38.10	1.600	40.64	30	2.900	73.66	3.000	76.20
3	0.200	5.08	0.300	7.62	17	1.600	40.64	1.700	43.18	31	3.000	76.20	3.100	78.74
4	0.300	7.62	0.400	10.16	18	1.700	43.18	1.800	45.72	32	3.100	78.74	3.200	81.28
5	0.400	10.16	0.500	12.70	19	1.800	45.72	1.900	48.26	33	3.200	81.28	3.300	83.82
6	0.500	12.70	0.600	15.24	20	1.900	48.26	2.000	50.80	34	3.300	83.82	3.400	86.36
7	0.600	15.24	0.700	17.78	21	2.000	50.80	2.100	53.34	35	3.400	86.36	3.500	88.90
8	0.700	17.78	0.800	20.32	22	2.100	53.34	2.200	55.88	36	3.500	88.90	3.600	91.44
9	0.800	20.32	0.900	22.86	23	2.200	55.88	2.300	58.42	37	3.600	91.44	3.700	93.98
10	0.900	22.86	1.000	25.40	24	2.300	58.42	2.400	60.96	38	3.700	93.98	3.800	96.52
11	1.000	25.40	1.100	27.94	25	2.400	60.96	2.500	63.50	39	3.800	96.52	3.900	99.06
12	1.100	27.94	1.200	30.48	26	2.500	63.50	2.600	66.04	40	3.900	99.06	4.000	101.60
13	1.200	30.48	1.300	33.02	27	2.600	66.04	2.700	68.58					
14	1.300	33.02	1.400	35.56	28	2.700	68.58	2.800	71.12					



POLARIZING KEY (Optional)



HOW TO ORDER:

W 0 2 5 - X X 1 X - 0 0 0 - Z

OF POSITIONS:
1 - 40

NUMBER OF ROWS:
1 - Single Row
2 - Double Row

Polarizing Key:
0 - w/Center Polarizing Notch
1 - w/OUT Center Polarizing Notch

RoHS COMPLIANT

ELETRICAL:
 CURRENT RATING: 1A AC/DC
 VOLTAGE RATING: 125V AC/DC

MATERIAL:
 BASE: Nylon UL94V-0
 STANDARD COLOR: Black

Rev	Drawn	Checked	Approved	Date
0 Issued	A.M.	S.M.	S.M.	02/13/04
A Revised for RoHS Compliance	B.S.	S.M.	S.M.	08/04/08

SMP TECHNOLOGY, INC.

2.54mm Pitch, Single Row Crimp Terminal Housing

TOL. DEC. .X +/- 0.2 .XX +/- 0.15 .XXX +/- 0.10

ANGLE +/- UNIT: in/mm

P/N:W025-XX1X-000-Z