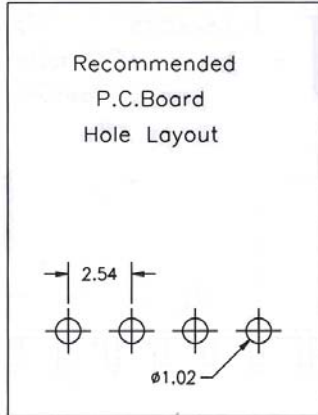


SPECIFICATIONS

Current Rating: 3 Amps
 Contact Material: Copper, Gold/Tin over Nickel Plating
 Contact Resistance: 30mΩ Max.
 Insulator Material: UL94V-0
 Insulation Resistance: 1000MΩ Min.
 Withstanding: 600V AC
 Operating Temp: -40°C to +105°C

Dimensions											
Pins	C	D	Pins	C	D	Pins	C	D	Pins	C	D
02	2.54	5.58	13	30.48	33.52	24	58.42	61.46	35	86.36	89.40
03	5.08	8.12	14	33.02	36.06	25	60.96	64.00	36	88.90	91.94
04	7.62	10.66	15	35.56	38.60	26	63.50	66.54	37	91.44	94.48
05	10.16	13.20	16	38.10	41.14	27	66.04	69.08	38	93.98	97.02
06	12.70	15.74	17	40.64	43.68	28	68.58	71.62	39	96.52	99.56
07	15.24	18.28	18	43.18	46.22	29	71.12	74.16	40	99.06	102.10
08	17.78	20.82	19	45.72	48.76	30	73.66	76.70			
09	20.32	23.36	20	48.26	51.30	31	76.20	79.24			
10	22.86	25.90	21	50.80	53.84	32	78.74	81.78			
11	25.40	28.44	22	53.34	56.38	33	81.28	84.32			
12	27.94	30.98	23	55.88	58.92	34	83.82	86.86			



Series	Rows	Profile	Contacts	Plating	Options
ARS	XX	LP	00	XX	XX
Receptacle Strip	01=Single 02=Dual 03=Single R/A 04=Dual R/A	LP=5.0mm	Single:3-40 Dual:6-72	TN=Tin SGXX=Selective Gold GDXX=Gold XX=Flash if blank 15,30,50	Blank=none SM=Surface Mount RT=Retention Tails

RoHS compliant

Rev.	Description	Date	Approved	Drawing	Name	Date
				Approved	Howard	08/25/08
				Checked	Lizzy	08/25/08
				Drawn	Tina	08/25/08
				0.0 ± 0.35	0.00 ± 0.20	Angles ± 3'
				UNIT: mm		

Central Components Manufacturing
 440 Lincoln Blvd., Middlesex, New Jersey 08846
 Phone 732 469-5720 888 288-5152 Fax 732 469-1919

Part No.: **ARS-XX-LP-00-XX-XX**

Description: Female Header Single Row DIP 2.54mm Pitch