

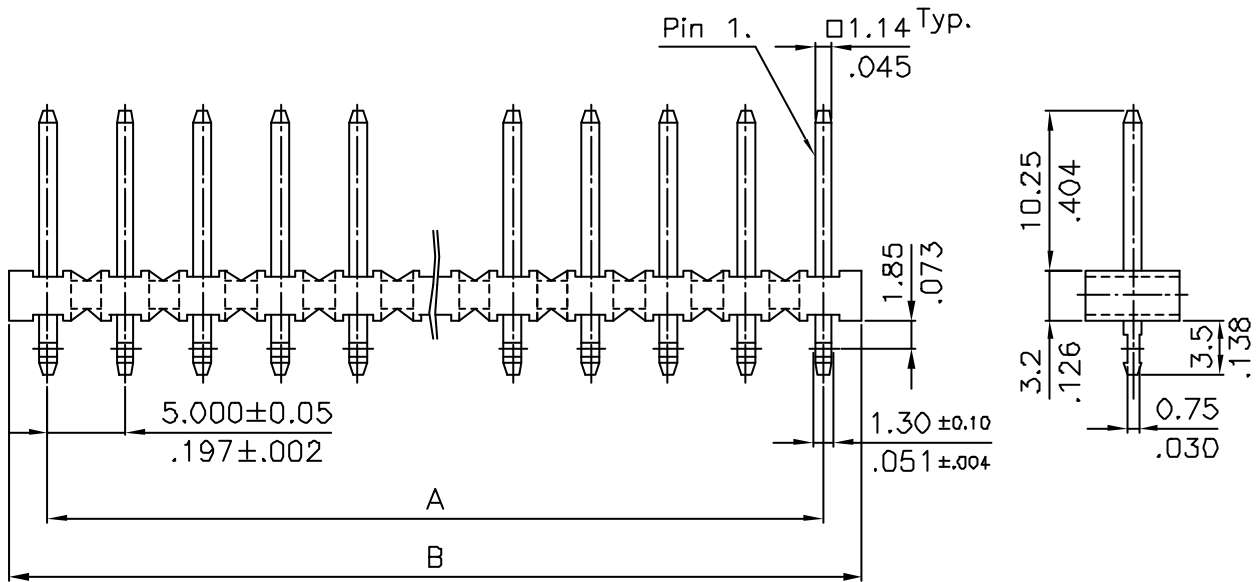
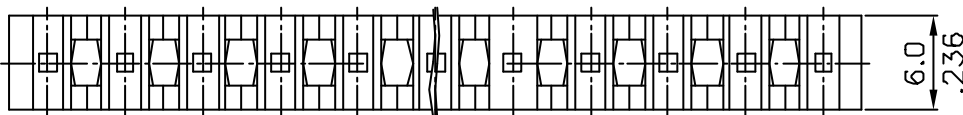
Material:

\* Insulator: Nylon 6/6 UL94V-0

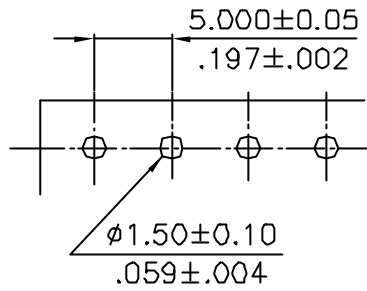
\* Contact: Brass

\* Plating: Tin plated  $120\mu$ " min. over  $30\sim 50\mu$ " nickel overall

PART NO.	DESCRIPTION
5016P**VG00	Empty Ckt: Without
5016P**VG01	Empty Ckt: P2
5016P**VG02	Empty Ckt: P2,4
5016P**VG03	Empty Ckt: P2,4,6
5016P**VG05	Empty Ckt: P2,4,6,8,10,12,14
5016P**VG08	Empty Ckt: P2,4,6,8,10
5016P**VG15	Empty Ckt: P2,4,6,8,10,12
5016P**VG28	Empty Ckt: P2,4,6,8



				<b>LECO</b> LEOCO CORPORATION		APPROVED:		PART NO.: 5016P**VG**			
				GENERAL TOLERANCE		DATE:		TITLE: HEADER			
				X. ±	X' ± 2'	CHECKED:		DRAWING NO.: 501633S			
				.X ± $\frac{0.30}{.012}$	.X' ± 1'	DATE:					
				.XX ± $\frac{0.20}{.008}$	.XX' ± 0.5'	DRAWN:					
				.XXX ± $\frac{0.10}{.004}$	.XXX' ± 0.1'	DATE:					
A	DWG REL					UNITS		SCALE	SIZE	SHEET	REV.
REV.	ECO. NO.	CHG.	APP.			$\frac{mm}{Inch}$		~	A4	1/2	A



RECOMMENDED HOLE PATTERN

CIRCUITS	PART NO.	DIMENSION	
		A	B
2	5016P02VG**	5.000<.197>	10.0<.394>
3	5016P03VG**	10.000<.394>	15.0<.591>
4	5016P04VG**	15.000<.591>	20.0<.787>
5	5016P05VG**	20.000<.787>	25.0<.984>
6	5016P06VG**	25.000<.984>	30.0<1.181>
7	5016P07VG**	30.000<1.181>	35.0<1.378>
8	5016P08VG**	35.000<1.378>	40.0<1.575>
9	5016P09VG**	40.000<1.575>	45.0<1.772>
10	5016P10VG**	45.000<1.772>	50.0<1.969>
11	5016P11VG**	50.000<1.969>	55.0<2.165>
12	5016P12VG**	55.000<2.165>	60.0<2.362>
13	5016P13VG**	60.000<2.362>	65.0<2.559>
14	5016P14VG**	65.000<2.559>	70.0<2.756>
15	5016P15VG**	70.000<2.756>	75.0<2.953>
16	5016P16VG**	75.000<2.953>	80.0<3.150>
17	5016P17VG**	80.000<3.150>	85.0<3.346>
18	5016P18VG**	85.000<3.346>	90.0<3.543>
19	5016P19VG**	90.000<3.543>	95.0<3.740>
20	5016P20VG**	95.000<3.740>	100.0<3.937>

				LECO CORPORATION		APPROVED:		PART NO.: 5016P**VG**				
				GENERAL TOLERANCE		DATE:		CHECKED:				
				X. ±	X° ± 2'	DATE:		TITLE: HEADER				
				.X ± $\frac{0.30}{.012}$	.X' ± 1'	DRAWN:		DRAWING NO.: 501633S				
A	DWG REL			.XX ± $\frac{0.20}{.008}$	.XX' ± 0.5'	DATE:						
REV.	ECO. NO.	CHG.	APP.	.XXX ± $\frac{0.10}{.004}$	.XXX' ± 0.1'			UNITS	SCALE	SIZE	SHEET	REV.
								$\frac{mm}{Inch}$	~	A4	2/2	A